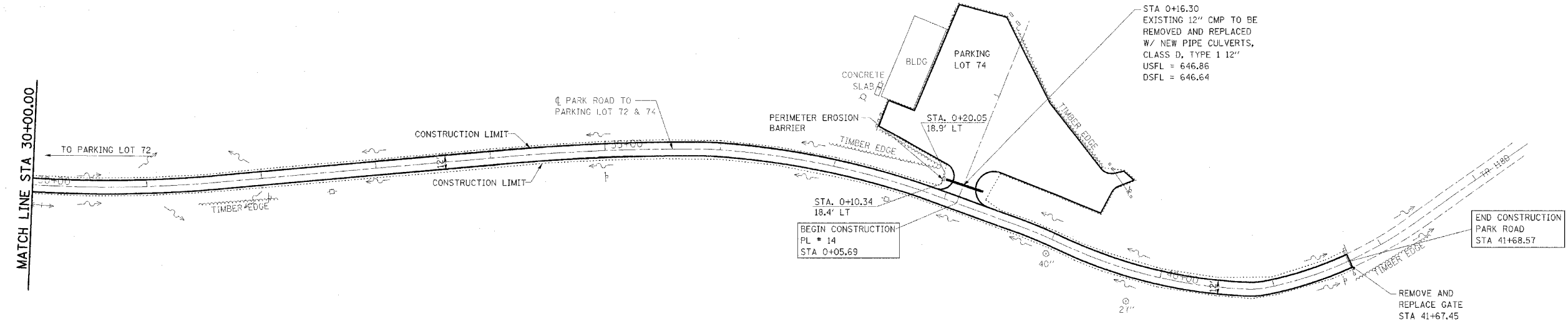
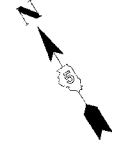


F.A. RTE.	SECTION	COUNTY	TOTAL SHEETS	SHEET NO.
*	**	***	310	156

STA. TO STA.

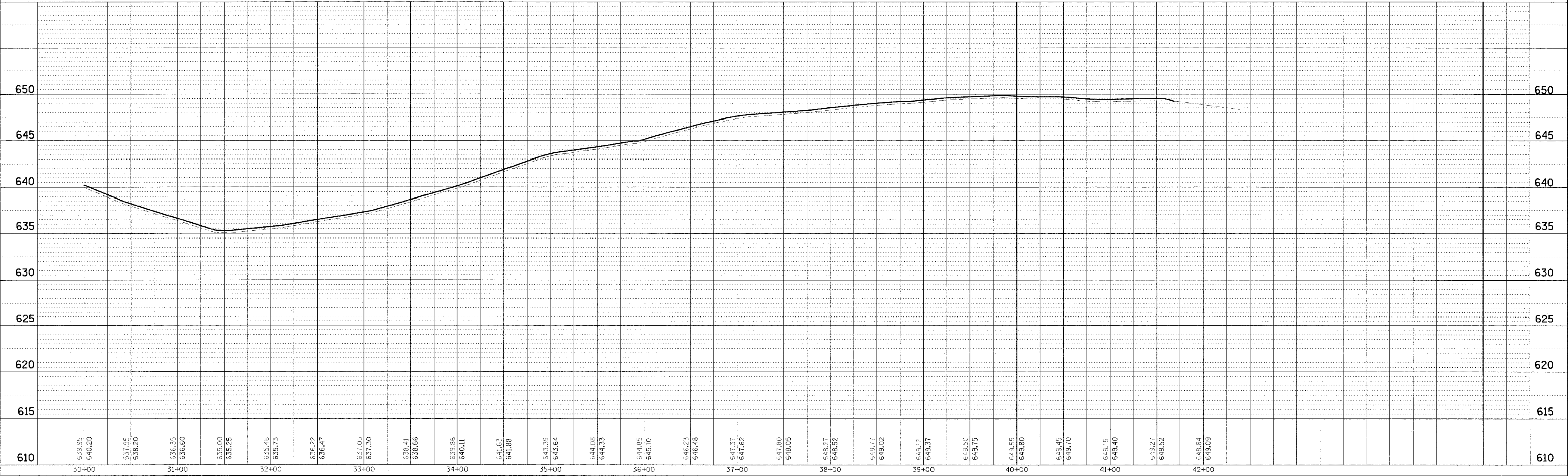
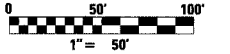
CONTRACT NO. 74155

- PARK ROADS
- ** SFWA PARK ROADS 2003-1
- *** MOULTRIE AND SHELBY



NOTE:
 PARK ROAD
 STA 0+00.00 TO STA 41+68.57
 SCARIFY ROAD AND PARKING
 LOT 72, ADD 3" AGGREGATE
 AND ADD A-2 TREATMENT

REVISIONS TO PARK ROADS AND PARKING LOTS
 SHOWN ON PREVIOUS PLAN SHEETS THAT DO NOT
 IMPACT EROSION CONTROL ARE NOT BALLOONED
 OR NOTED AS REVISIONS TO ELIMINATE CLUTTER
 AND CROWDING ON THE EROSION CONTROL SHEETS



KASKASKIA FISH & WILDLIFE UNIT EROSION CONTROL PLAN AND PROFILE, PARK ROAD TO PARKING LOTS 72 & 74

DATE	
BY	
CHECKED	
DESIGNED	
PLANNED	
NOTED	
NO.	

DATE	
BY	
CHECKED	
DESIGNED	
PLANNED	
NOTED	
NO.	