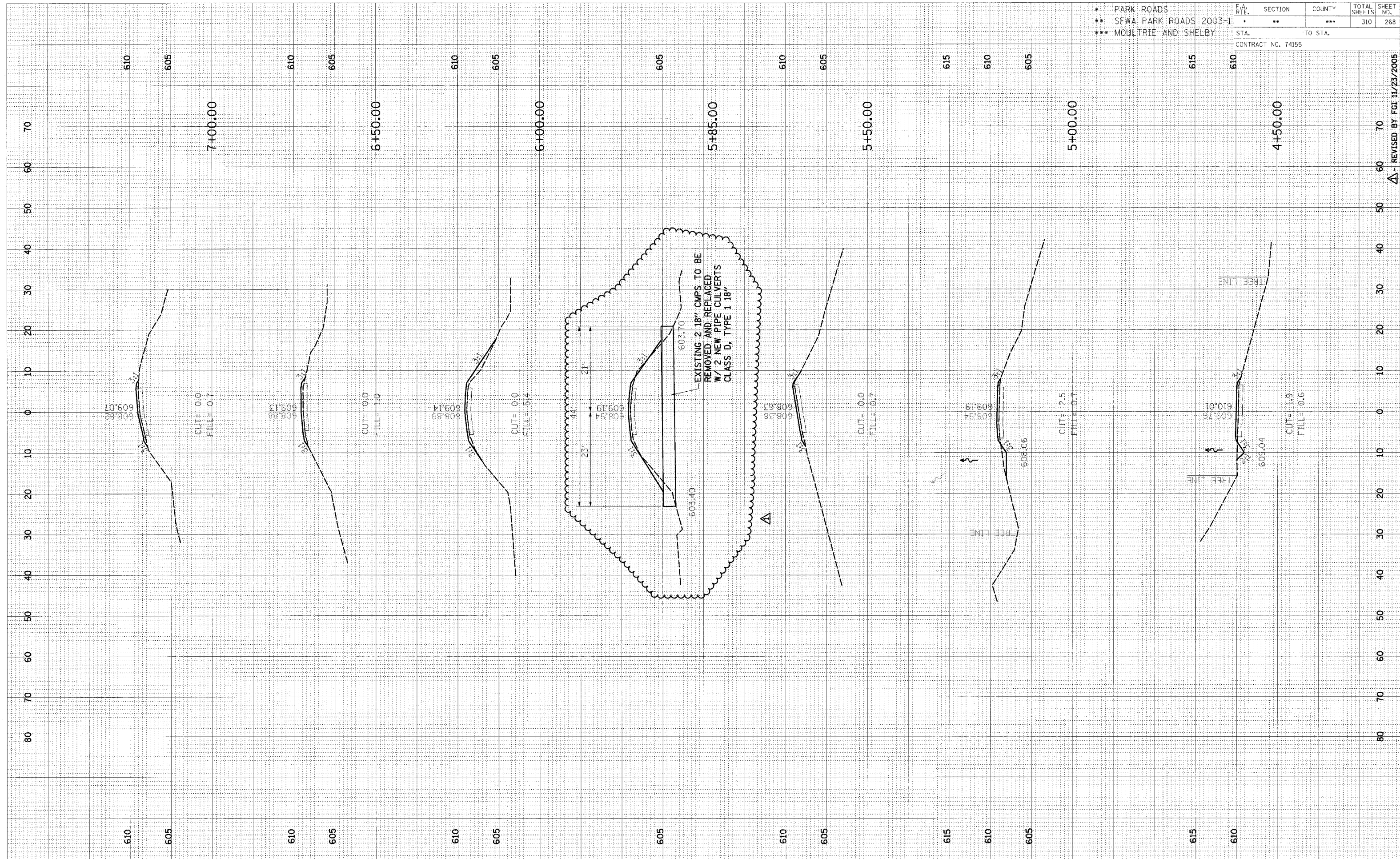


DATE	
BY	
REVISIONS	
NO.	
DATE	
BY	
REVISIONS	
NO.	
DATE	
BY	
REVISIONS	
NO.	

DATE	
BY	
REVISIONS	
NO.	
DATE	
BY	
REVISIONS	
NO.	
DATE	
BY	
REVISIONS	
NO.	

- * PARK ROADS
- ** SFWA PARK ROADS 2003-1
- *** MOULTRIE AND SHELBY

F.A. RTE.	SECTION	COUNTY	TOTAL SHEETS	SHEET NO.
*	**	***	310	268
STA.		TO STA.		
CONTRACT NO. 74155				



Δ - REVISED BY FGI 11/23/2005

CROSS SECTION, KASKASKIA, PARK ROAD TO PARKING LOT 67, STA 4+50.00 TO STA 7+00.00