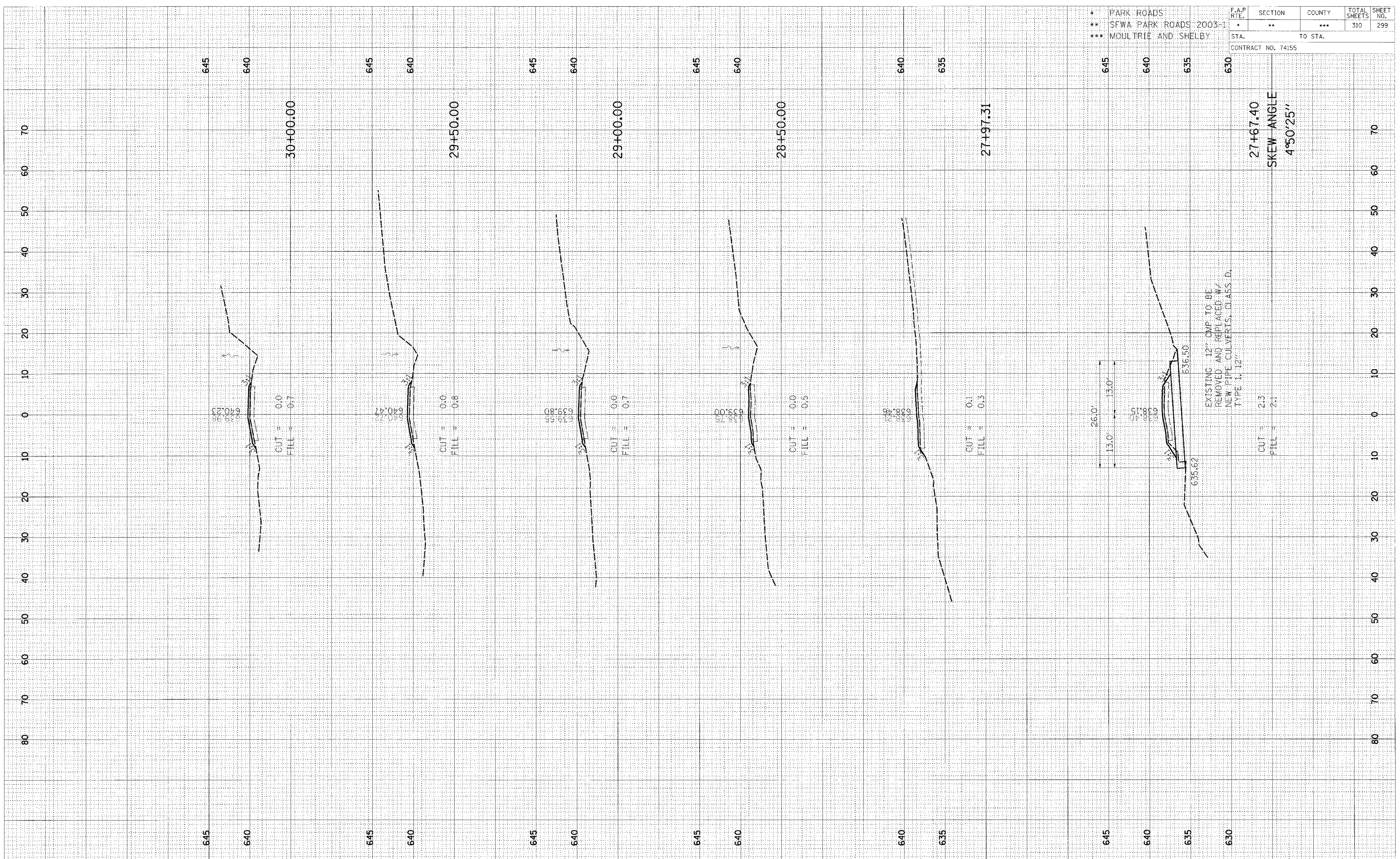


ORIGINAL SURVEY	SURVEYED
NOTE BOOK	PLOTTED
NO.	TEMPLATE
	AREAS CHECKED

* PARK ROADS	F.A.P. RTE.	SECTION	COUNTY	TOTAL SHEETS	SHEET NO.
** SFWA PARK ROADS 2003-1		**	***	310	299
*** MOULTRIE AND SHELBY	STA.	TO STA.			
CONTRACT NO. 74155					



CROSS SECTION, KASKASKIA, PARK ROAD TO PARKING LOTS 72 & 74, STA 27+67.40 TO STA 30+00.00