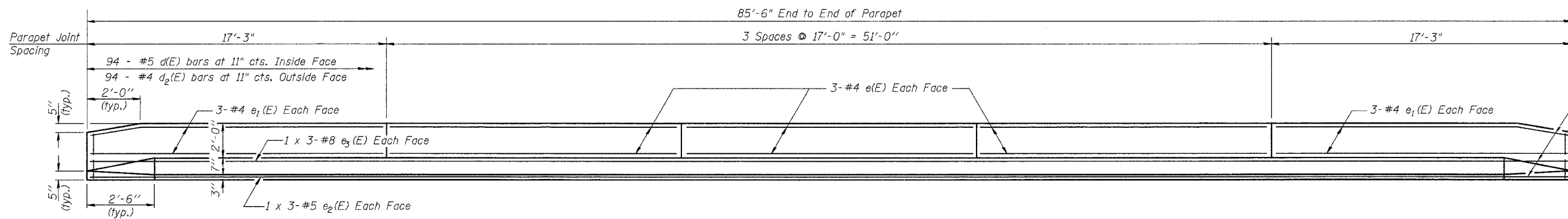


ROUTE NO.	SECTION	COUNTY	TOTAL SHEETS	SHEET NO.
F.A.P. 42	2BR	WASHINGTON	33	21
FED. ROAD DIST. NO. 8	ILLINOIS	PROJECT	Sheet 7 of 16	
			CONTRACT #76389	



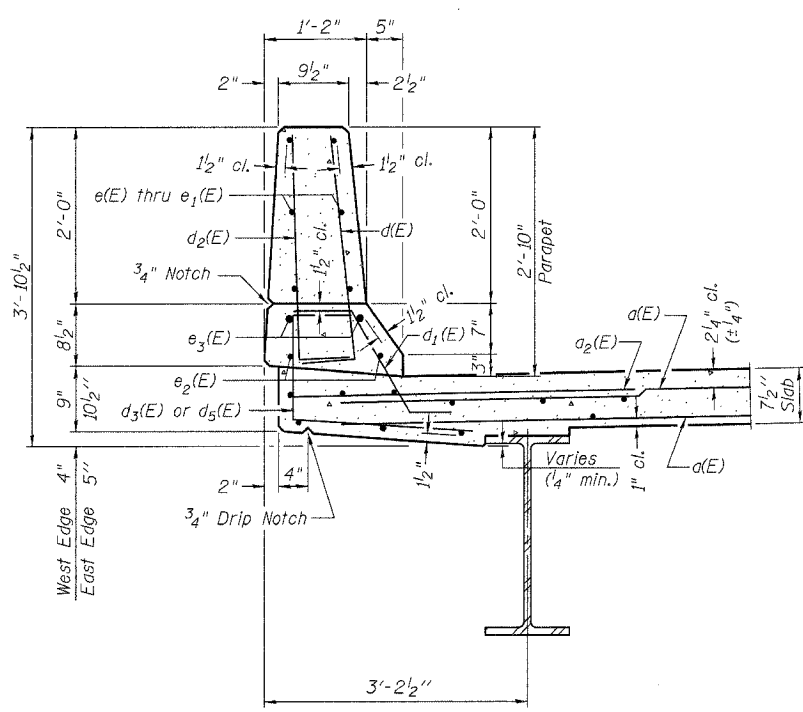
INSIDE ELEVATION OF PARAPET

SUPERSTRUCTURE
BILL OF MATERIAL

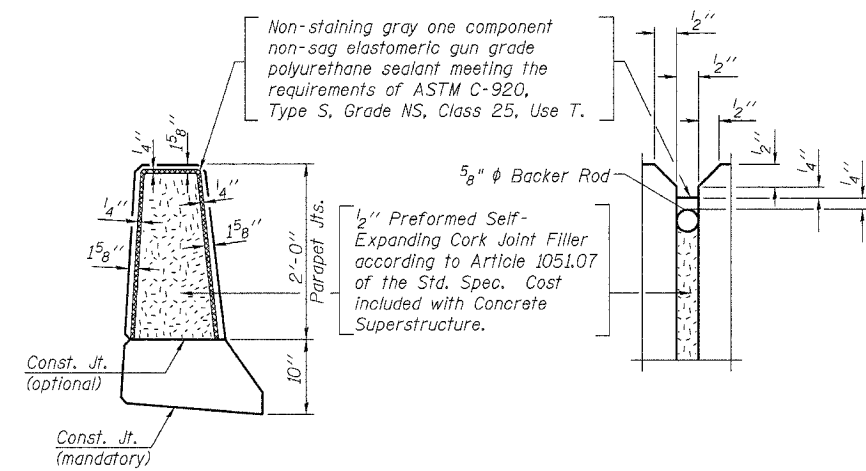
Bar	No.	Size	Length	Shape
d(E)	544	#5	19'-6"	—
a1(E)	158	#6	4'-6"	—
b(E)	168	#5	22'-7"	—
b1(E)	108	#5	29'-6"	—
d(E)	188	#5	3'-0"	┌
d1(E)	176	#5	2'-5"	┌
d2(E)	188	#4	3'-0"	┌
d3(E)	94	#4	3'-10"	┌
d4(E)	12	#5	2'-2"	┌
d5(E)	94	#4	3'-11"	┌
e(E)	36	#4	16'-8"	—
e1(E)	24	#4	16'-11"	—
e2(E)	12	#5	29'-10"	—
e3(E)	12	#8	31'-5"	—
m(E)	8	#6	19'-0"	—
m1(E)	12	#6	19'-9"	—
m2(E)	24	#6	8'-5"	—
m3(E)	10	#6	6'-5"	—
m4(E)	4	#6	2'-10"	—
s(E)	84	#5	4'-6"	┌
s1(E)	72	#4	9'-8"	┌
v(E)	80	#5	3'-8"	┌
Reinforcement Bars, Epoxy Coated		Pound	25550	
Concrete Superstructure		Cu. Yds.	132.4	
Bar Splicers		Each	360	

MIN. BAR LAPS

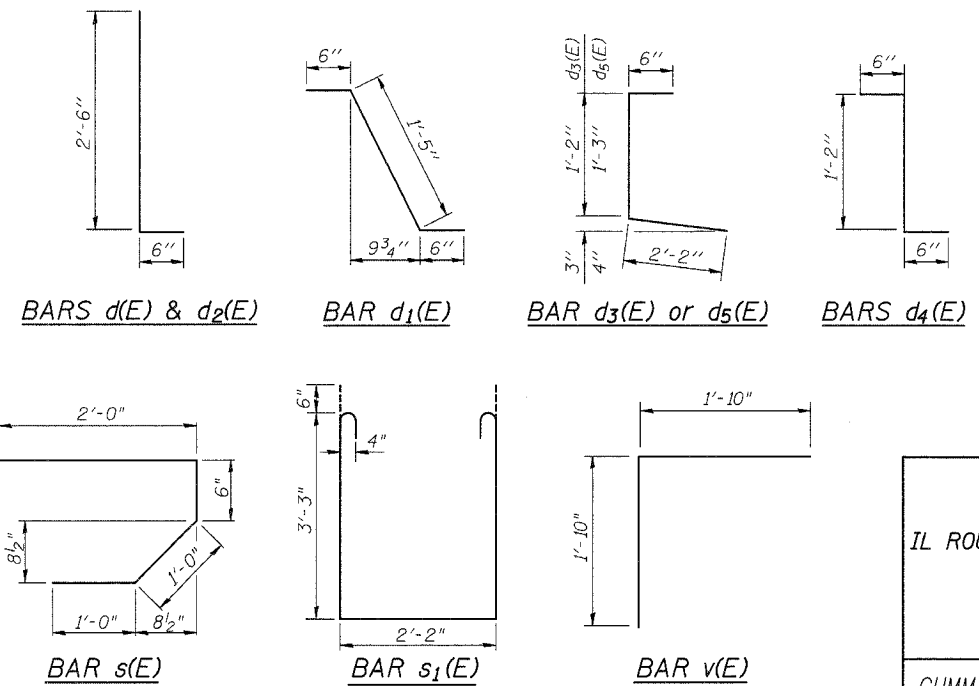
#5 Bar = 2'-2"
#8 Bar = 4'-6"



SECTION THRU PARAPET



PARAPET JOINT DETAILS



DESIGNED	Ruben V. Boehler
CHECKED	Tim S. Howard
DRAWN	Nicole L. Darling
CHECKED	Michael D. Cummins

Reinforcement bars designated (E) shall be epoxy coated.
Bars indicated thus 1 x 3 - #5 etc. indicates 1 line of bars with 3 lengths per line.

SUPERSTRUCTURE DETAILS
IL ROUTE 127 OVER TRIBUTARY TO CROOKED CREEK
F.A.P. ROUTE 42 SECTION 2BR
WASHINGTON COUNTY
STA. 487+25
S.N. 095-0076

CUMMINS ENGINEERING CORPORATION	JOB #: 2158
	FILE: 2158SUPER
	DATE: 12/14/04