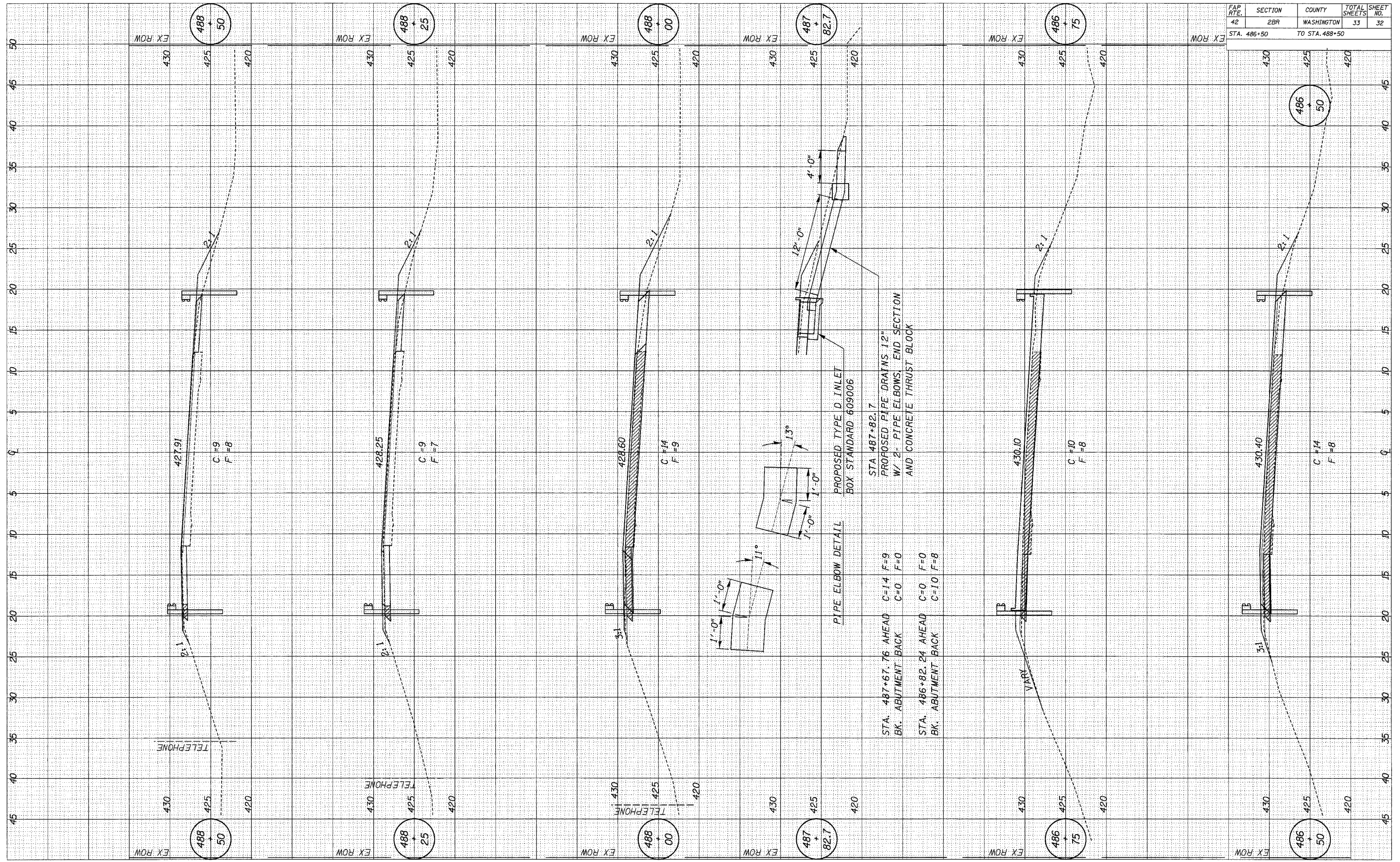


FAP RTE.	SECTION	COUNTY	TOTAL SHEETS	SHEET NO.
42	2BR	WASHINGTON	33	32
STA. 486+50 TO STA. 488+50				

FINAL SURVEY NO.	BY	DATE
REVISIONS		
NO.		

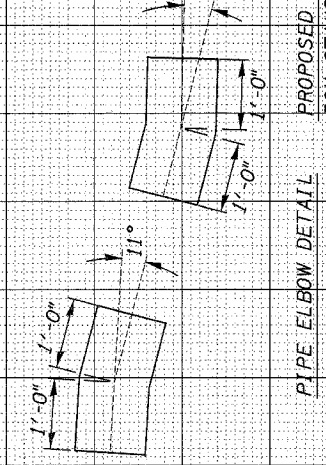
ORIGINAL SURVEY NO.	BY	DATE
REVISIONS		
NO.		



STA. 487+67.76 AHEAD C=14 F=9 BK. ABUTMENT BACK

STA. 486+82.24 AHEAD C=0 F=0 BK. ABUTMENT BACK

STA. 487+82.7 PROPOSED PIPE DRAINS 12" W/ 2" PIPE ELBOWS. END SECTION AND CONCRETE THRUST BLOCK



VARY