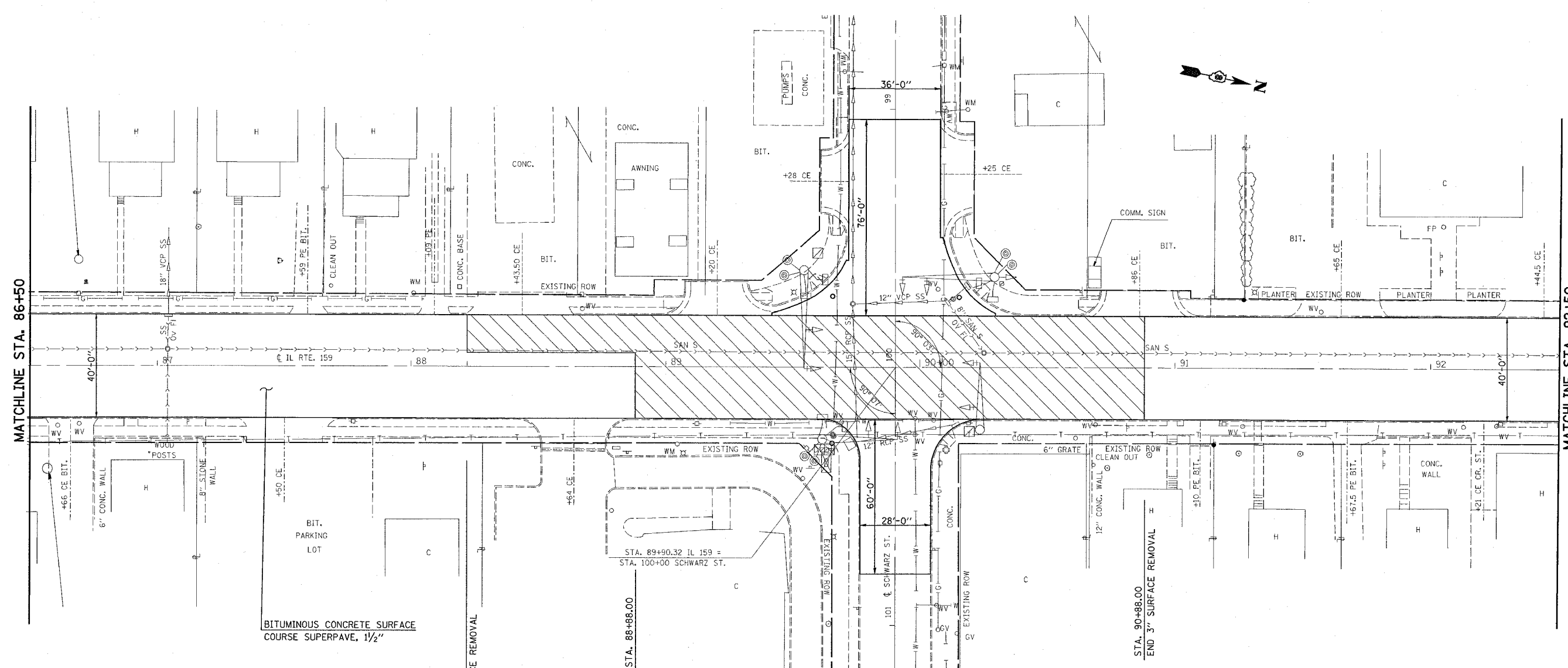


F.A.P. RTE.	SECTION	COUNTY	TOTAL SHEETS	SHEET NO.
600	34RS-2	ST. CLAIR	39	19
STA. 86+50.00		TO STA. 92+50.00		
FED. ROAD DIST. NO. .		ILLINOIS FED. AID PROJECT		



MATCHLINE STA. 86+50

MATCHLINE STA. 92+50

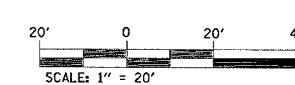
BITUMINOUS CONCRETE SURFACE  
COURSE SUPERPAVE, 1 1/2"

STA. 88+22.00  
BEGIN 3" SURFACE REMOVAL

STA. 88+88.00

STA. 89+90.32 IL 159 =  
STA. 100+00 SCHWARZ ST.

STA. 90+88.00  
END 3" SURFACE REMOVAL



DATE

ILLINOIS DEPARTMENT OF TRANSPORTATION

**PLAN VIEW**

FAP ROUTE 600  
SECTION 34RS-2  
MADISON COUNTY

SCALE: VERT.     DRAWN BY  
HORIZ.             CHECKED BY

PLOT DATE = 5/15/2006  
FILE NAME = c:\p1\1505\1505.dwg  
PLOT SCALE = 20,000 / IN.  
USER NAME = dmsalman