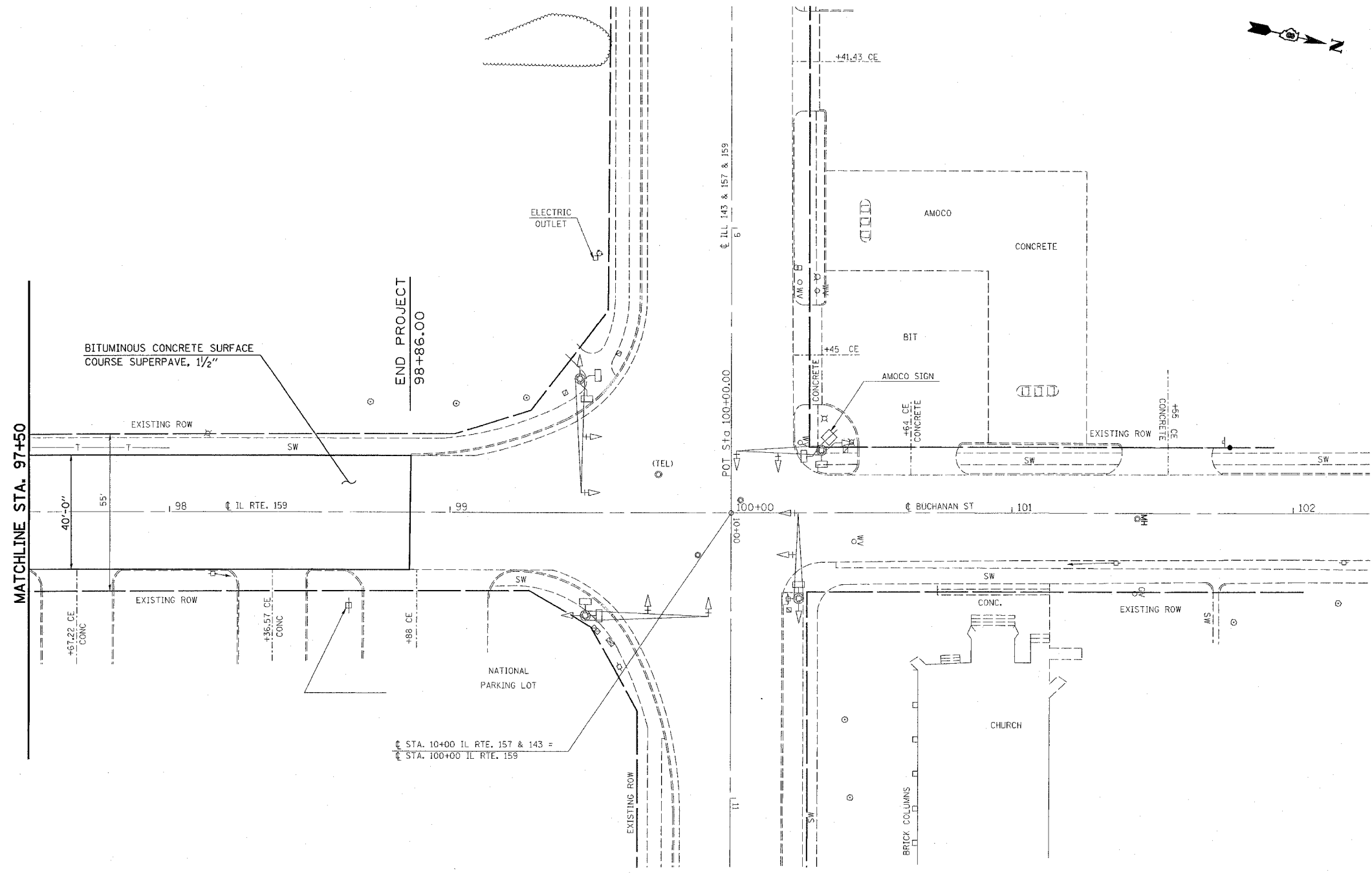


F.A.P. RTE.	SECTION	COUNTY	TOTAL SHEETS	SHEET NO.
600	34RS-2	ST. CLAIR	39	21
STA. 97+50.00		TO STA. 98+86.00		
FED. ROAD DIST. NO.		ILLINOIS FED. AID PROJECT		

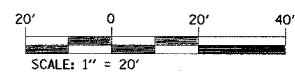


MATCHLINE STA. 97+50

BITUMINOUS CONCRETE SURFACE
COURSE SUPERPAVE, 1 1/2"

END PROJECT
98+86.00

☐ STA. 10+00 IL RTE. 157 & 143 =
☐ STA. 100+00 IL RTE. 159



EXISTING ROW

DATE

ILLINOIS DEPARTMENT OF TRANSPORTATION

PLAN VIEW

FAP ROUTE 600
SECTION 34RS-2
MADISON COUNTY

SCALE: VERT.
HORIZ.
DATE

DRAWN BY
CHECKED BY

PLOT DATE = 5/15/2006
 FILE NAME = c:\prowork\7108\plan\ch1029a.dgn
 USER NAME = dmsalmanjr