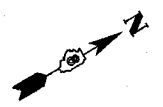
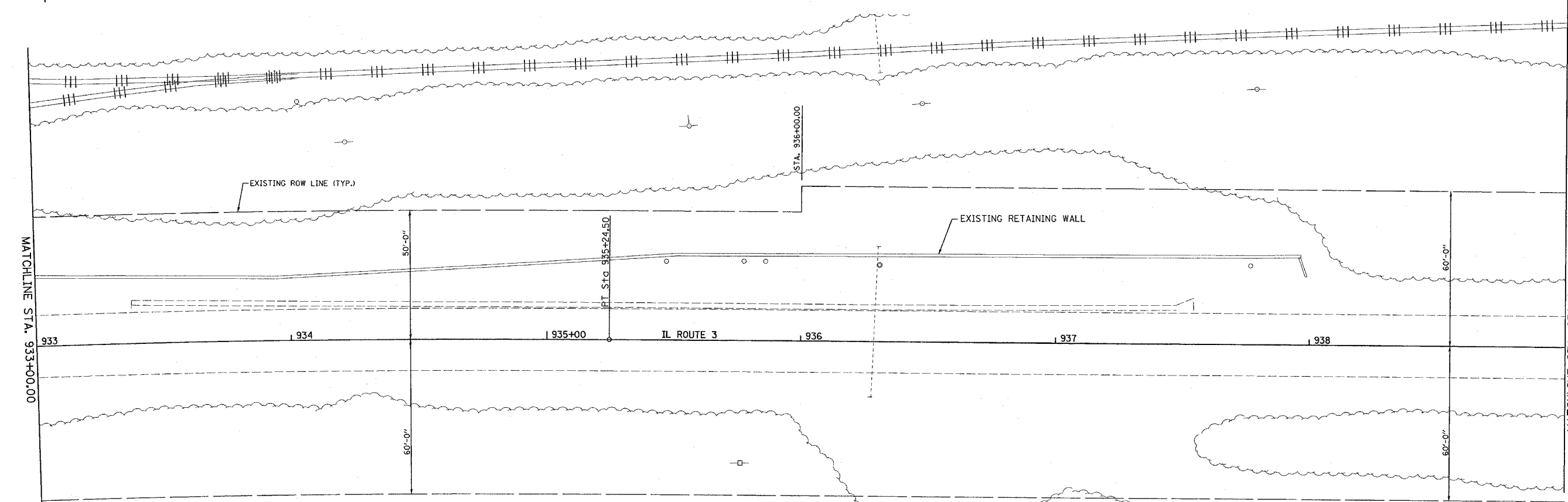
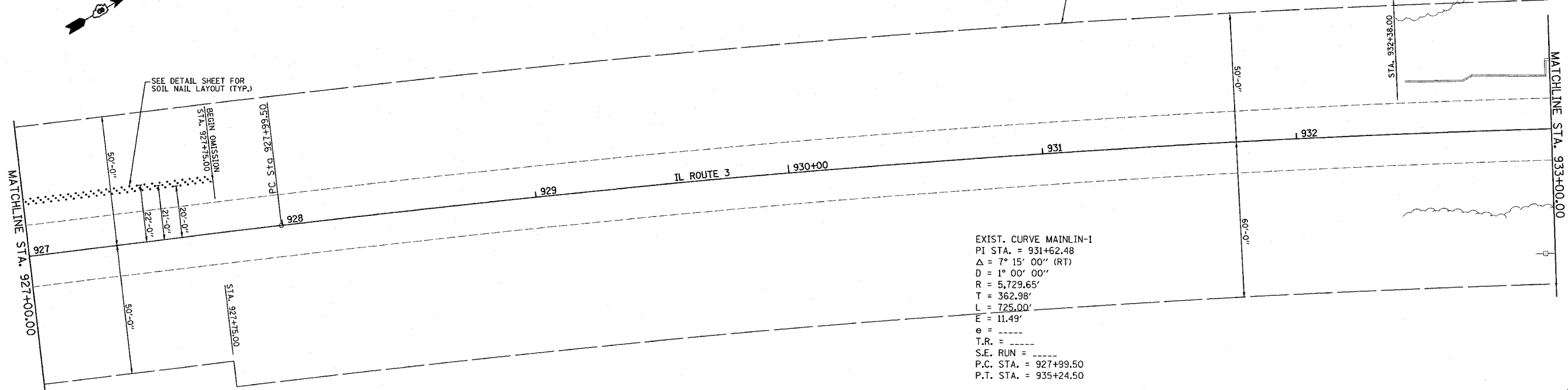


F.A.P. RTE.	SECTION	COUNTY	TOTAL SHEETS	SHEET NO.
312	1221-4	RANDOLPH	21	5
STA. 927+00.00		TO STA. 933+00.00		
FED. ROAD DIST. NO.		ILLINOIS FED. AID PROJECT		

PLANS DRAWN FROM MICROFILM  
FIELD VERIFY EXISTING CONDITIONS



PLAN	SURVEYED	DATE
	PLOTTED	
	NOTED	
	BY	
	NO. OF STA. CHECKED	
	CADD FILE NAME	



REVISIONS	
NAME	DATE

ILLINOIS DEPARTMENT OF TRANSPORTATION  
**PLAN VIEW**  
 FAP ROUTE 312 (IL 003)  
 SECTION 1221-4  
 RANDOLPH COUNTY

SCALE: VERT. \_\_\_\_\_  
 HORIZ. \_\_\_\_\_

DATE \_\_\_\_\_ DRAWN BY \_\_\_\_\_  
 CHECKED BY \_\_\_\_\_

#DATE#  
 5/18/2006  
 C:\projects\76859\plan\plan05.dgn  
 \*REF\*