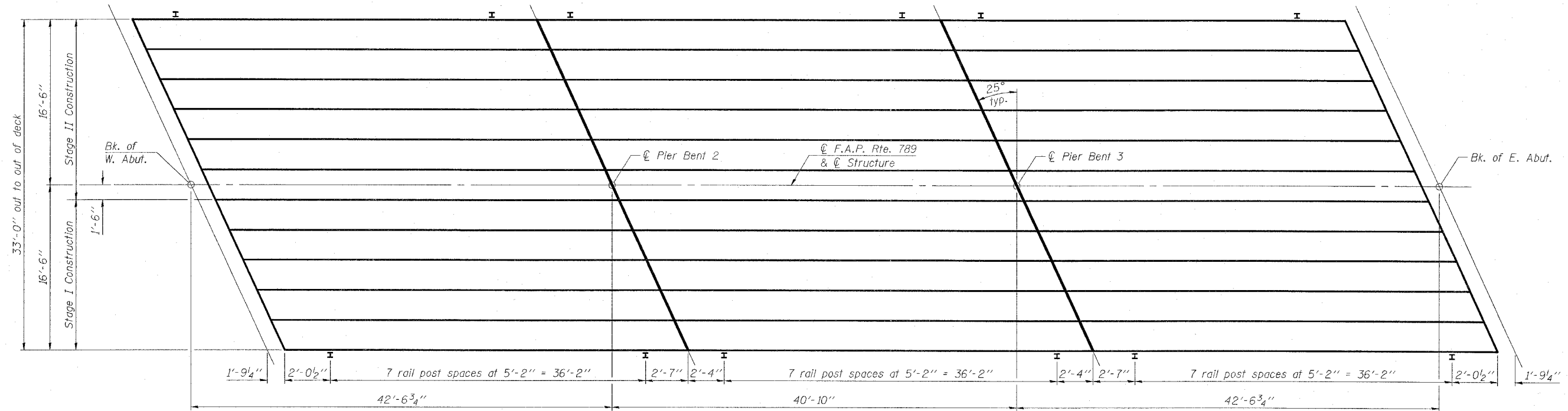


STATE OF ILLINOIS
DEPARTMENT OF TRANSPORTATION

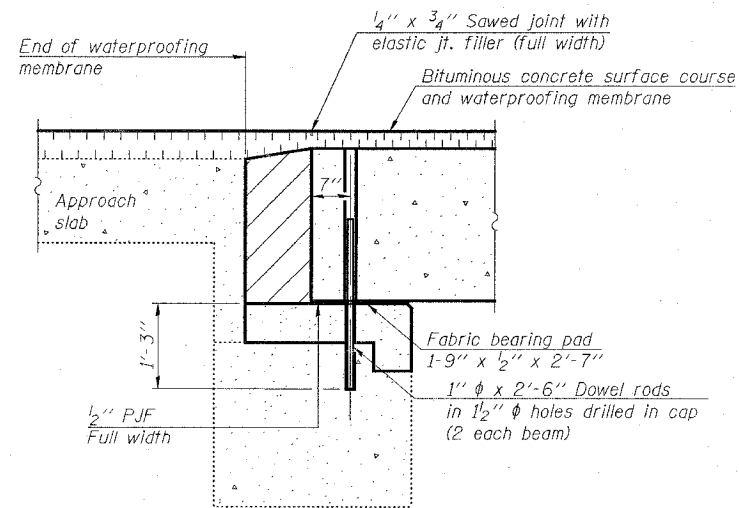
| | | | | |
|-----------------------|----------|------------------|--------------|-----------|
| ROUTE NO. | SECTION | COUNTY | TOTAL SHEETS | SHEET NO. |
| F.A.P. 789 | 68-BR-1 | MADISON | 14 | 5 |
| FED. ROAD DIST. NO. 7 | ILLINOIS | FED. AID PROJECT | | |

Contract #76896

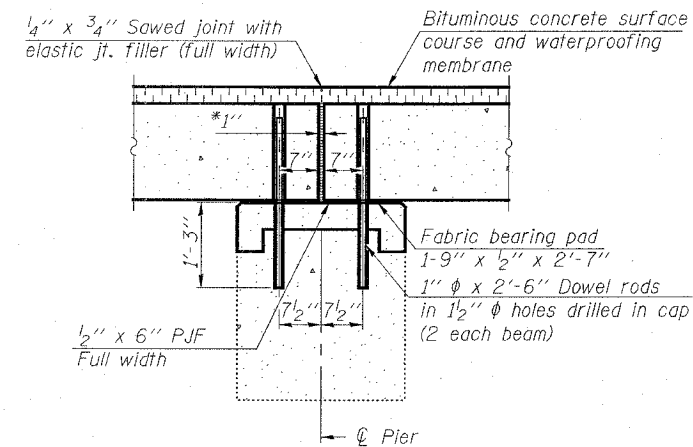


Note:
Rail spacing the same on both sides of the bridge.

PLAN



SECTION THRU ABUTMENT



SECTION THRU FIXED PIER

Notes:
After beams have been erected, holes shall be drilled into substructure and anchor dowels placed. Dowel holes shall be filled with non-shrink grout to top of beam and allowed to cure min. 24 hrs. prior to grouting the shear keys.
All horizontal dimensions are at right angles to beam ends. Hatched area to be poured after beams are in place. See sheet 7 of 12 for bearing pad details.

* 1" Jt. shall be filled with non-shrink grout. 1" dimension may vary to accommodate tolerance in beam lengths.

| | |
|----------|--------|
| DESIGNED | E.M.L. |
| CHECKED | N.J.M. |
| DRAWN | E.M.L. |
| CHECKED | N.J.M. |

HORNER & SHIFRIN, INC.
ENGINEERS ■ ARCHITECTS ■ PLANNERS

SUPERSTRUCTURE DETAILS
F.A.P. ROUTE 789 - SECTION 68-BR-1
MADISON COUNTY
STATION 98+33.25
STRUCTURE NO. 060-0150