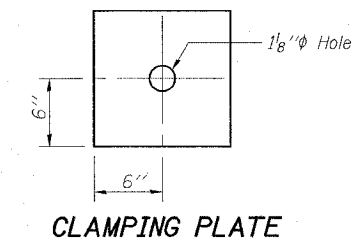
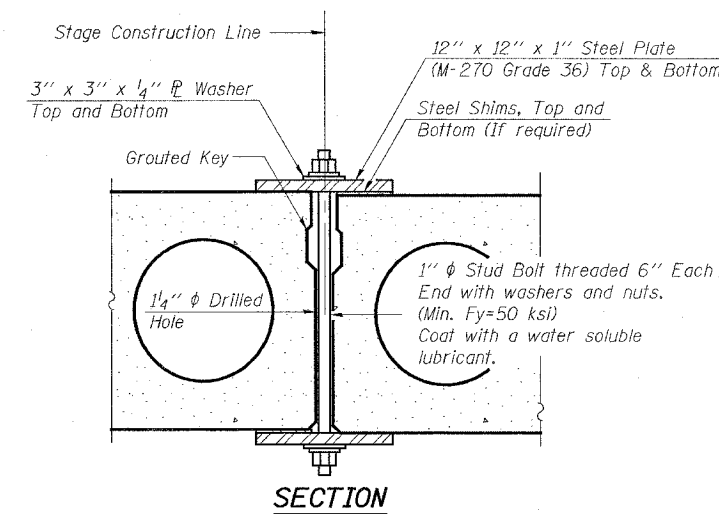
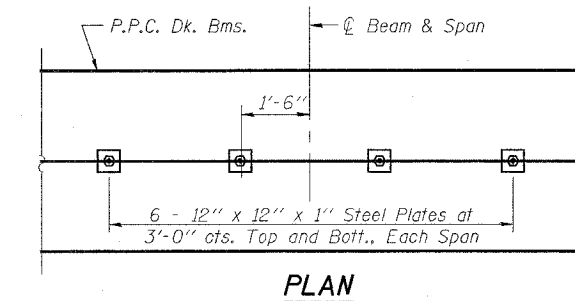
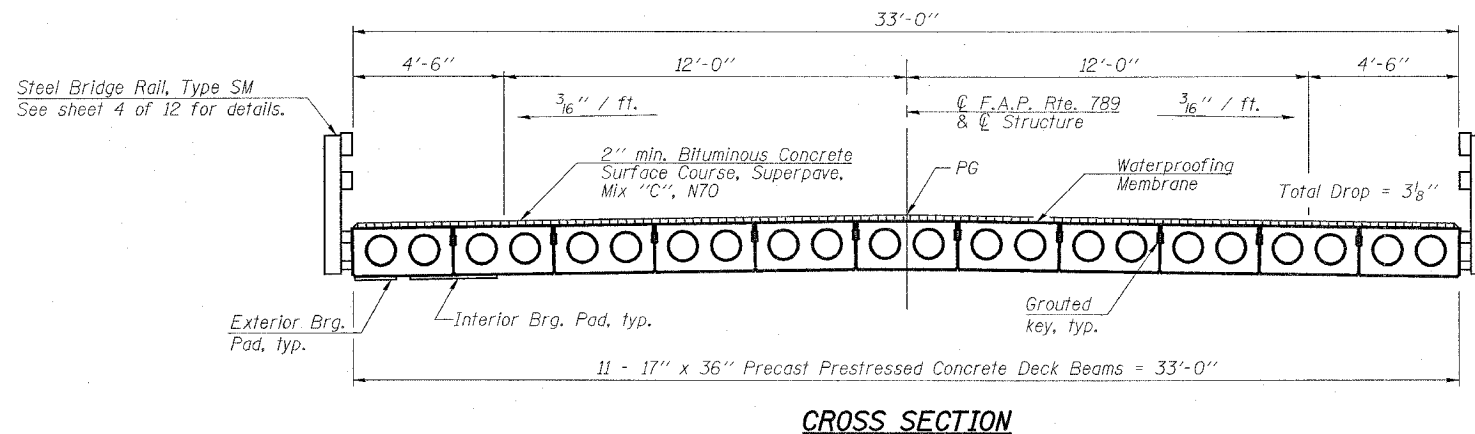


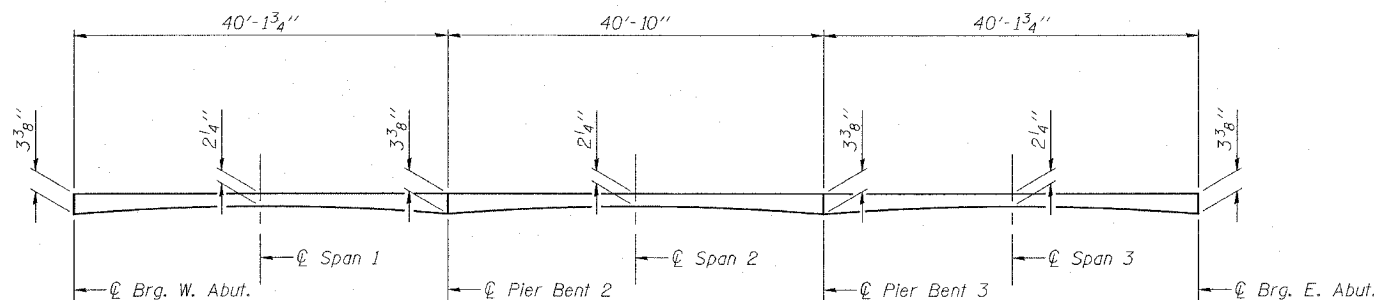
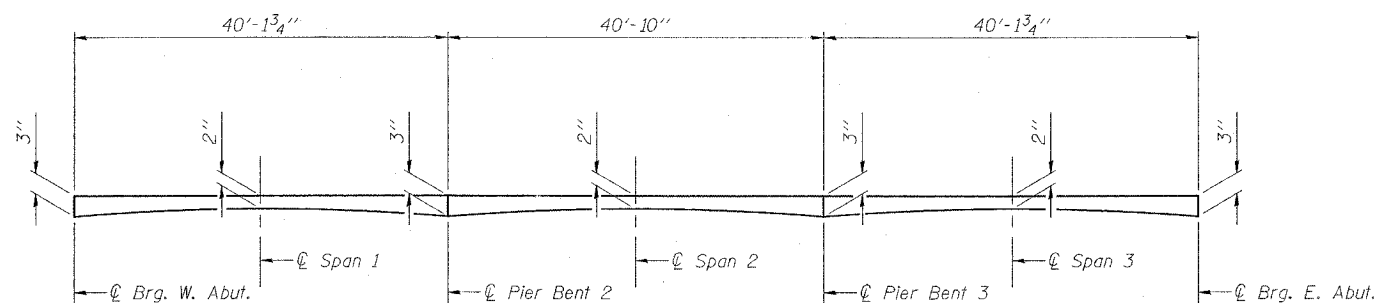
STATE OF ILLINOIS
DEPARTMENT OF TRANSPORTATION

ROUTE NO.	SECTION	COUNTY	TOTAL SHEETS	SHEET NO.	SHEET NO. 6 12 SHEETS
F.A.P. 789 68-BR-1	MADISON			15	
FED. ROAD DIST. NO. 7	ILLINOIS	FED. AID PROJECT-	Contract #76896		



SHEAR KEY CLAMPING DETAILS AT STAGE CONST. JT.

See Special Provisions for Stage Construction of Precast Prestressed Concrete Deck Beams. Cost included with "Precast Prestressed Concrete Deck Beams". See Stage Construction Details for traffic lanes.



Note:
Bituminous Concrete Surface Course Profile dimensions include 1/2" for waterproofing membrane thickness.

DESIGNED	EML
CHECKED	NJM
DRAWN	EML
CHECKED	NJM

HORNER & SHIFRIN, INC.
ENGINEERS ■ ARCHITECTS ■ PLANNERS

SUPERSTRUCTURE DETAILS
F.A.P. ROUTE 789 - SECTION 68-BR-1
MADISON COUNTY
STATION 98+33.25
STRUCTURE NO. 060-0150