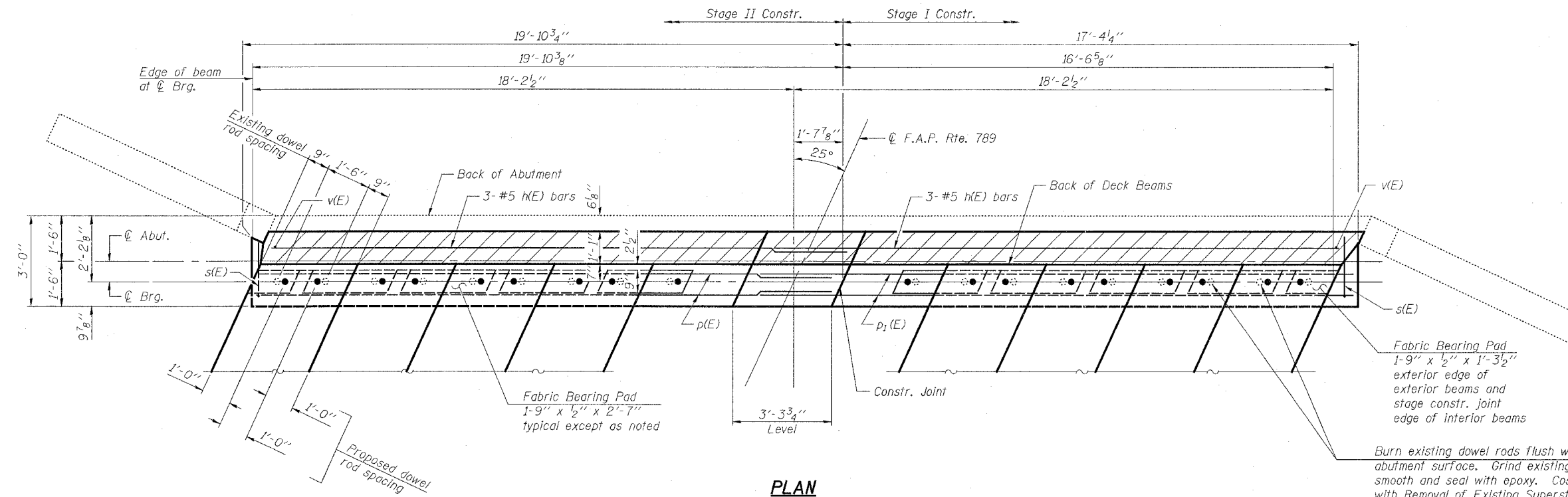


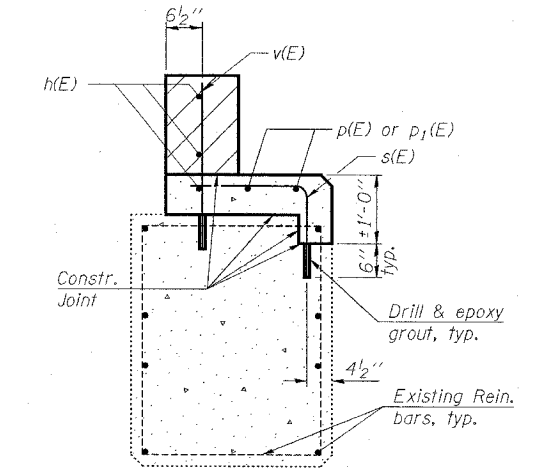
STATE OF ILLINOIS  
DEPARTMENT OF TRANSPORTATION

ROUTE NO.	SECTION	COUNTY	TOTAL SHEETS	SHEET NO.
F.A.P. 789	68-BR-1	MADISON	18	9
FED. ROAD DIST. NO. 7	ILLINOIS	FED. AID PROJECT		12 SHEETS

Contract #76896

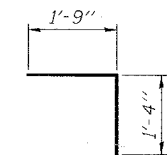


**PLAN**  
(Not all deck beams and bearings are shown)  
(Bituminous concrete surface course not shown)

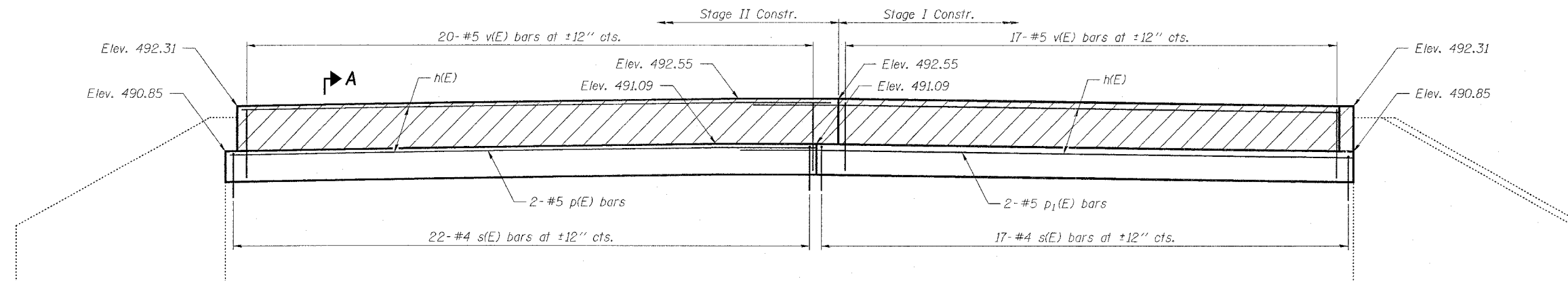


**SECTION A-A**  
(Deck beams, bearings and approach slab not shown)  
(Bituminous concrete surface course not shown)

Burn existing dowel rods flush with existing abutment surface. Grind existing dowel rods smooth and seal with epoxy. Cost is included with Removal of Existing Superstructures.



**BAR s(E)**



**ELEVATION**  
(Looking East)  
(Deck beams and bearings not shown)  
(Bituminous concrete surface course not shown)

**BILL OF MATERIAL**

Bar	No.	Size	Length	Shape
h(E)	6	#5	19'-4"	
p(E)	2	#5	19'-6"	
p <sub>1</sub> (E)	2	#5	20'-1"	
s(E)	39	#4	3'-1"	└
v(E)	37	#5	2'-3"	
Concrete Structures			Cu. Yd.	4.4
Reinforcement Bars, Epoxy Coated			Pound	370

Reinforcement Bars designated (E) shall be epoxy coated.  
Provide 2" chamfer to edge of beamseat.

Note:  
Hatched area to be poured after beams are in place.  
For Abutment "Concrete Removal" details, see sheet 10 of 12.  
For Abutment Repair details, see sheet 12 of 12.

DESIGNED	EML
CHECKED	NJM
DRAWN	EML
CHECKED	NJM

**HORNER & SHIFRIN, INC.**  
ENGINEERS ■ ARCHITECTS ■ PLANNERS

**EAST ABUTMENT**  
**F.A.P. ROUTE 789 - SECTION 68-BR-1**  
**MADISON COUNTY**  
**STATION 98+33.25**  
**STRUCTURE NO. 060-0150**