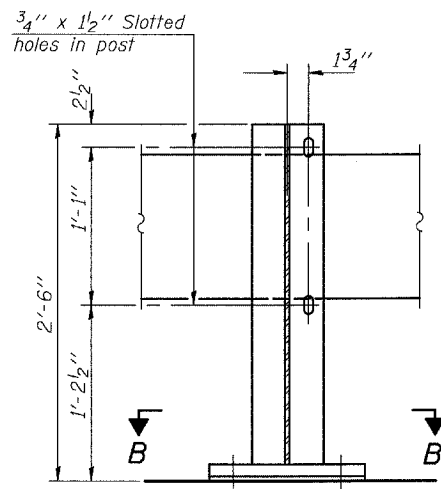


STATE OF ILLINOIS
DEPARTMENT OF TRANSPORTATION

ROUTE NO.	SECTION	COUNTY	TOTAL SHEETS	SHEET NO.
-	-	-	63	33
FED. ROAD DIST. NO. 7		ILLINOIS	FED. AID PROJECT-	

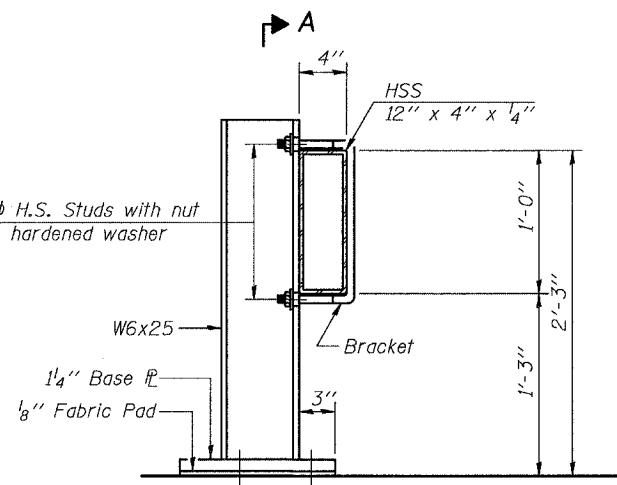
SHEET NO. 9
39 SHEETS

Contract #76899

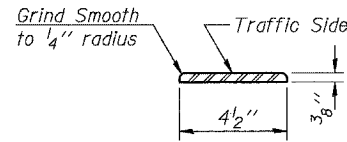


SECTION A-A

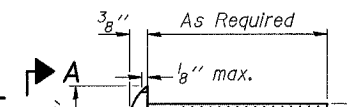
2-5/8" φ H.S. Studs with nut and flat hardened washer



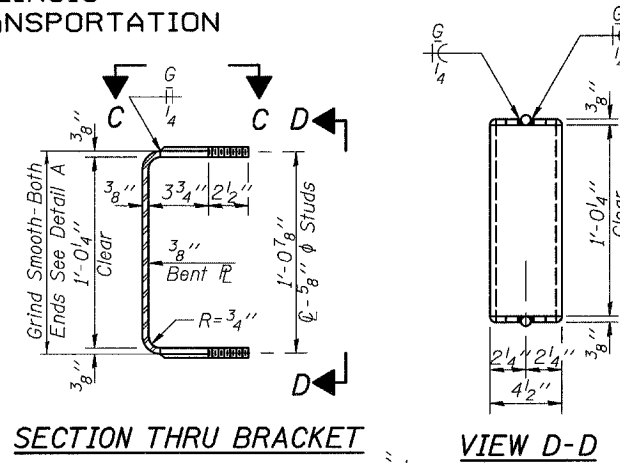
SECTION AT RAIL POST



DETAIL A

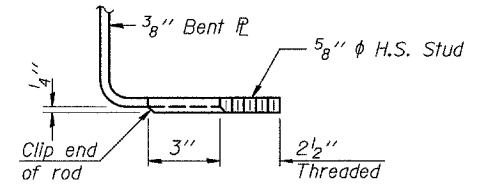


VIEW A-A
ROUND HEAD BOLT

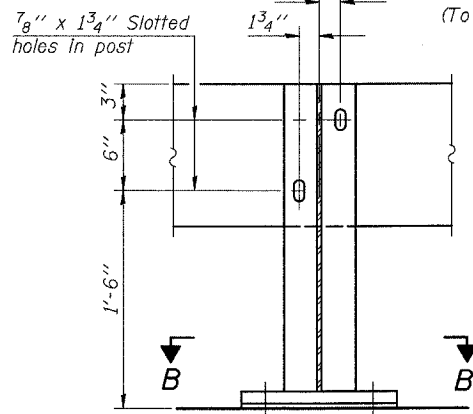


SECTION THRU BRACKET

VIEW D-D



VIEW E-E

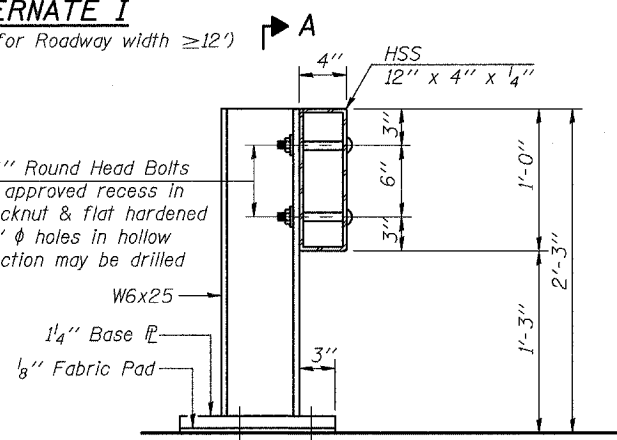


SECTION A-A

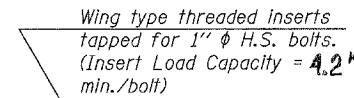
ALTERNATE I

(To be used only for Roadway width ≥ 12')

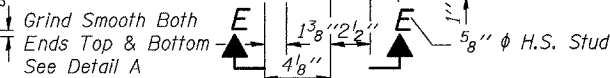
2-3/4" φ x 6" Round Head Bolts (With slot or approved recess in head) with locknut & flat hardened washer. 7/8" φ holes in hollow structural section may be drilled in the field.



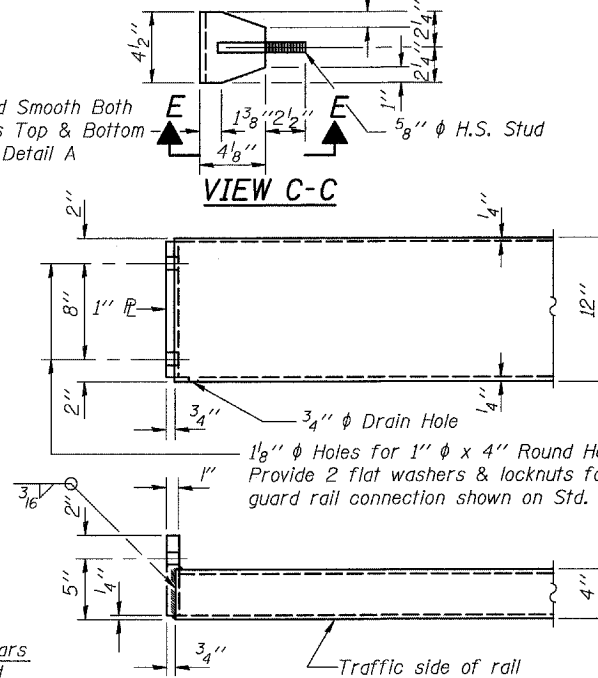
SECTION AT RAIL POST



INSERT DETAIL

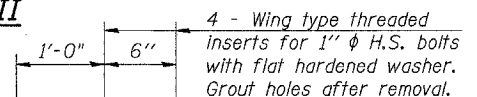


VIEW C-C



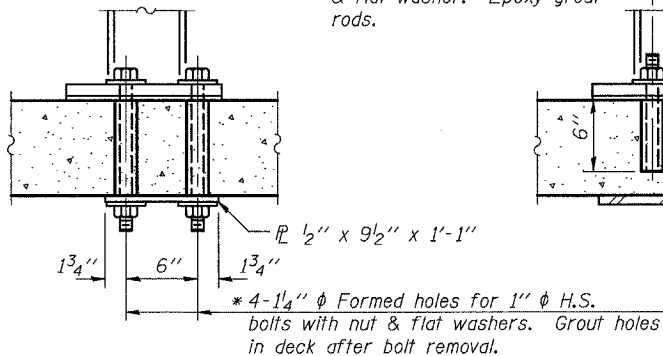
END OF RAIL DETAILS

ALTERNATE II

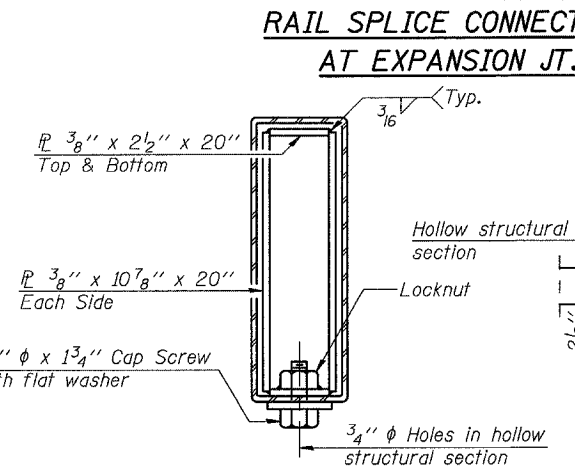


P.P.C. DECK BEAMS

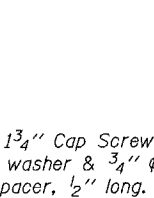
*Drill 4-1 1/4" φ holes for 1" φ threaded rods with hex nut & flat washer. Epoxy grout rods.



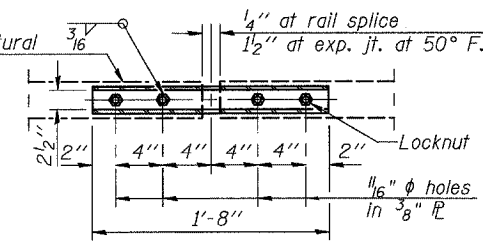
NEW & EXISTING DECKS
ANCHORAGE DETAILS



SECTION AT RAIL SPLICE



RAIL SPLICE CONNECTION
AT EXPANSION JT.



PLAN-BOTT. SPLICE R
TYPICAL

NOTES

Hollow structural sections shall conform to the requirements of ASTM designation A 500 Grade B Structural Steel Tubing. All other steel shapes and plates shall conform to the requirements of AASHTO M 270 Grade 36 except posts and brackets shall conform to AASHTO M 270, Grade 50. Bolts, cap screws, and nuts shall conform to the requirements of ASTM designation A 307 except for high strength bolts, threaded rods, studs, nuts and washers noted which shall conform to AASHTO M 164. The bridge rail shall receive one shop coat of a steel prime paint. The 1" φ high strength bolts or threaded rods used to connect the railposts shall be tightened according to Article 505.04(f)(2) of the Standard Specifications. Temporary Bridge Rail shall be according to Section 514 of the Standard Specifications, except as noted, and will be paid for at the contract unit price per foot for Temporary Bridge Rail. See sheet 10 of 39 for Rail Post spacing. The contact surfaces between post flange, rail and inside face of bracket for Alternate I shall be free of all lubricants. The nut for 5/8" φ high strength studs used in Alternate I to connect bracket to post shall be tightened to a snug fit and given an additional one half turn.

TEMPORARY BRIDGE RAIL
FOR STAGE CONSTRUCTION
OLD U.S. ROUTE 50 OVER
SHOAL CREEK
F.A.S. ROUTE 1780 - SECTION 24-BR-
CLINTON COUNTY
STA. 102+51.47
STRUCTURE NO. 014-0062

PLOT DATE = 05/15/2006
FILE NAME = h:\p\25004\technical\production\structural\014-0062\final\plans\0062-09-tempbrdgerail.shd.dgn
PLOT SCALE = 0.1:1.0000
USER NAME = USER#