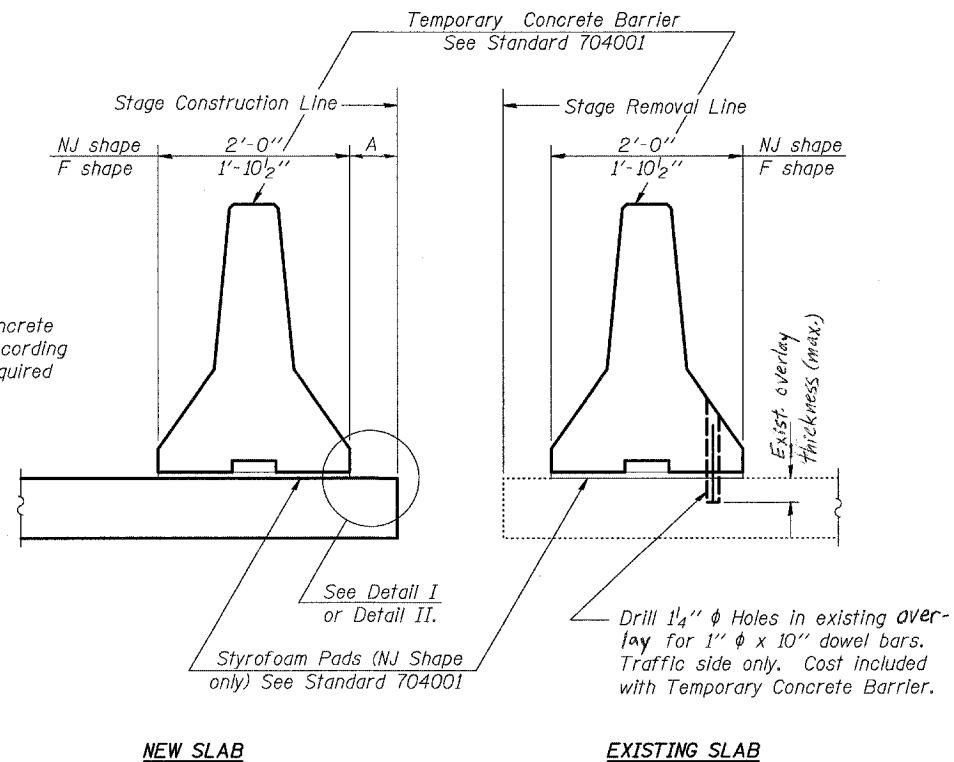


STATE OF ILLINOIS  
DEPARTMENT OF TRANSPORTATION

ROUTE NO.	SECTION	COUNTY	TOTAL SHEETS	SHEET NO.
-	-	-	63	35
FED. ROAD DIST. NO. 7		ILLINOIS	FED. AID PROJECT-	

SHEET NO. 1  
39 SHEETS

Contract #76899

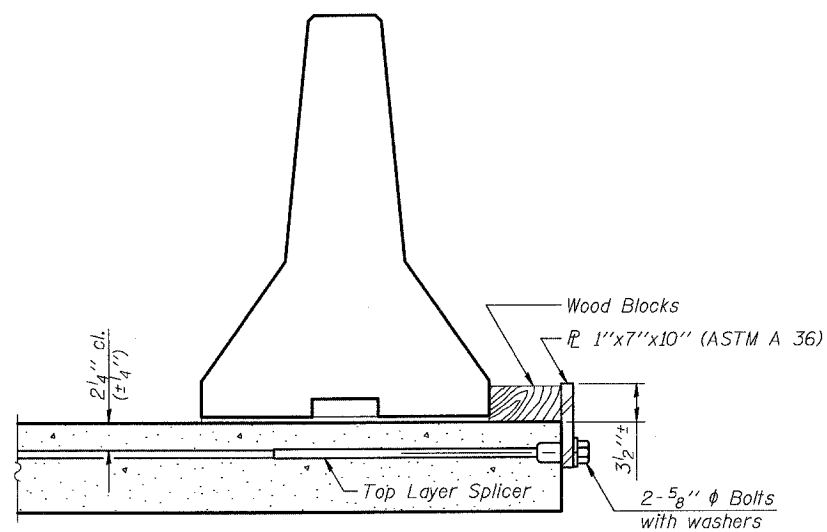


When "A" is 3'-6" or less, the temporary concrete barrier shall be anchored to the new slab according to Detail I or Detail II. No anchorage is required when "A" is greater than 3'-6".

**NOTES**

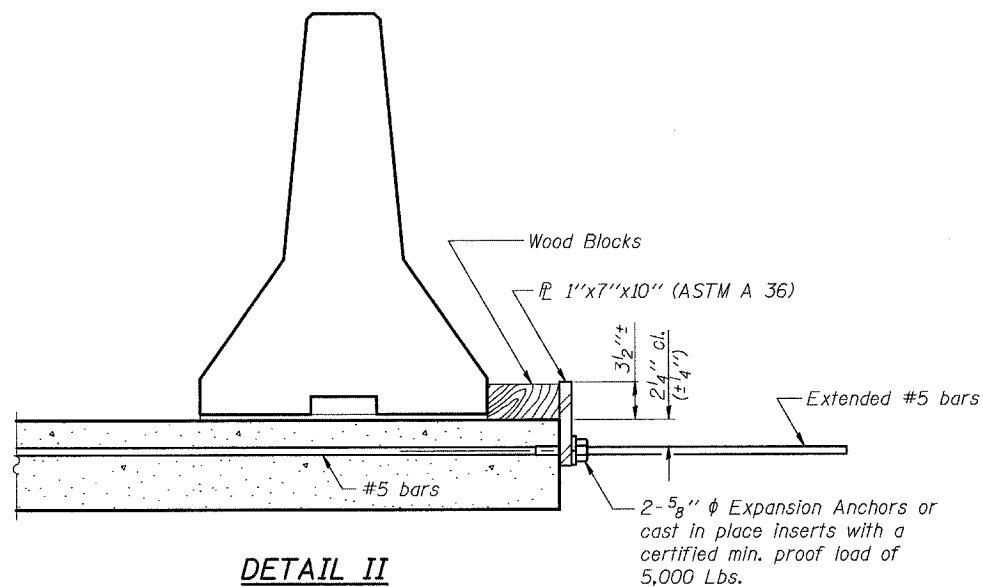
- Detail I - With Bar Splicer or Couplers:**  
Connect one (1) 1"x7"x10" steel PL to the top layer of couplers with 2-5/8" phi bolts screwed to coupler at approximate C of each barrier panel.
- Detail II - With Extended Reinforcement Bars:**  
Connect one (1) 1"x7"x10" steel PL to the concrete slab with 2-5/8" phi Expansion Anchors or cast in place inserts spaced between the top layer of reinforcement at approximate C of each barrier panel.
- Cost of anchorage is included with Temporary Concrete Barrier.

**SECTIONS THRU SLAB**



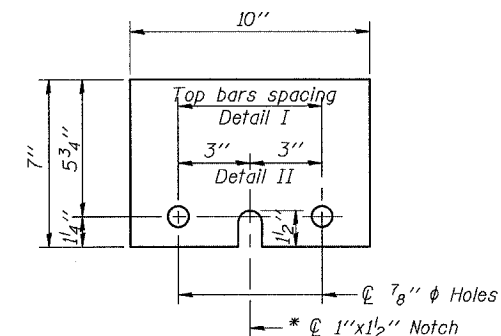
**DETAIL I**

The 1"x7"x10" Plate shall not be removed until Stage II Construction forms and reinforcement bars are in place.



**DETAIL II**

The 1"x7"x10" Plate shall not be removed until Stage II Construction forms and all reinforcement bars are in place and the concrete is ready to be placed.



**PL 1"x7"x10"**

\* Required only with Detail II

**TEMPORARY CONCRETE BARRIER**

**FOR STAGE CONSTRUCTION**

**OLD U.S. ROUTE 50 OVER**

**SHOAL CREEK**

**F.A.S. ROUTE 1780 - SECTION 24-BR-**

**CLINTON COUNTY**

**STA. 102+51.47**

**STRUCTURE NO. 014-0062**

PLOT DATE = 05/15/2006  
FILE NAME = h:\p\250004\technical\production\structural\en\_014-0062\final\_plans\0062-11-tempconcretebarrier.sht.dgn  
PLOT SCALE = 0.110000' / IN.  
USER NAME = #USER#