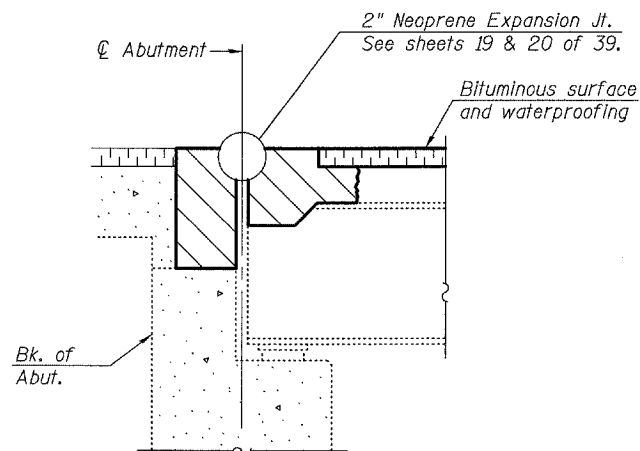


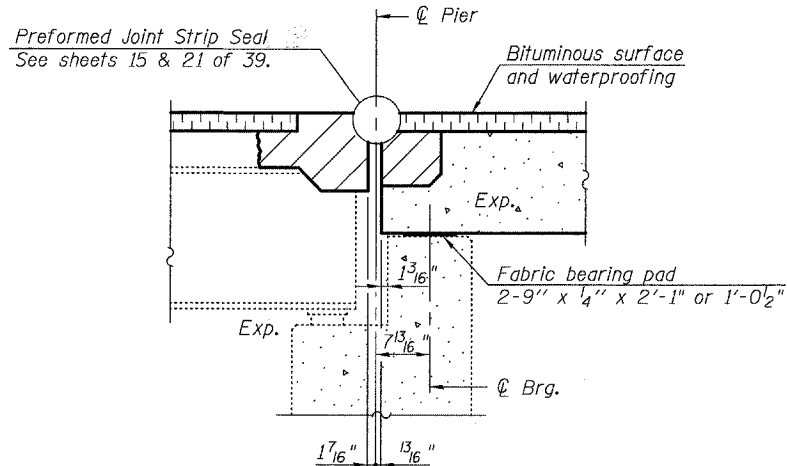
STATE OF ILLINOIS  
DEPARTMENT OF TRANSPORTATION

ROUTE NO.	SECTION	COUNTY	TOTAL SHEETS	SHEET NO.
			63	38
FED. ROAD DIST. NO. 7	ILLINOIS	FED. AID PROJECT		

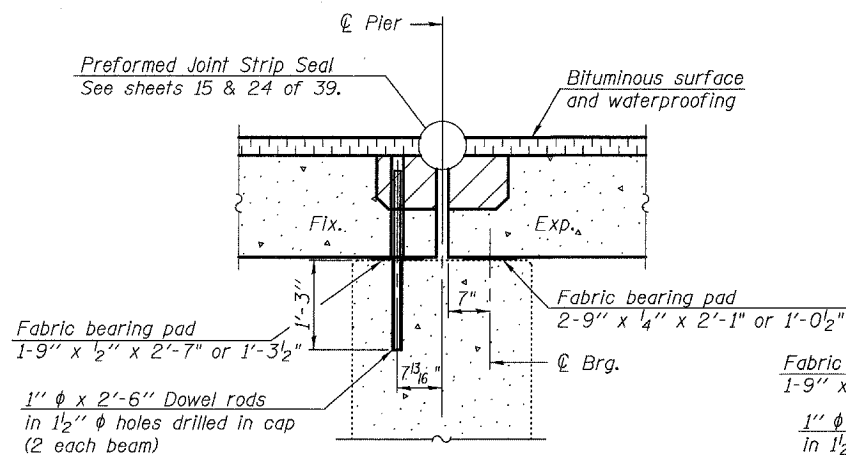
Contract #76899



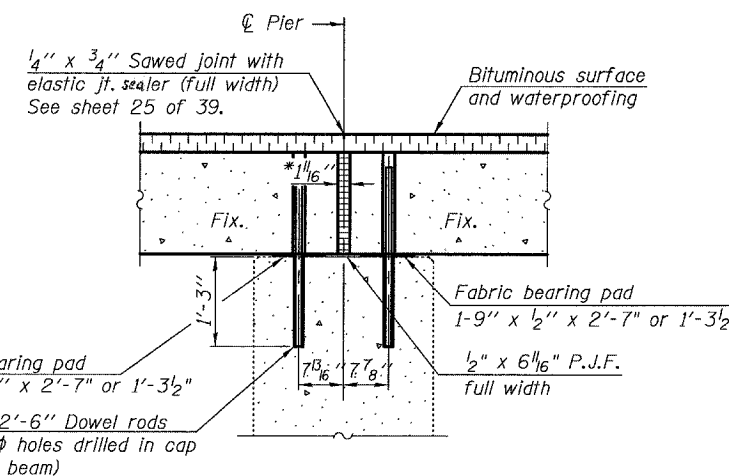
SECTION THRU WEST ABUTMENT ②



SECTION THRU PIER 3 ②

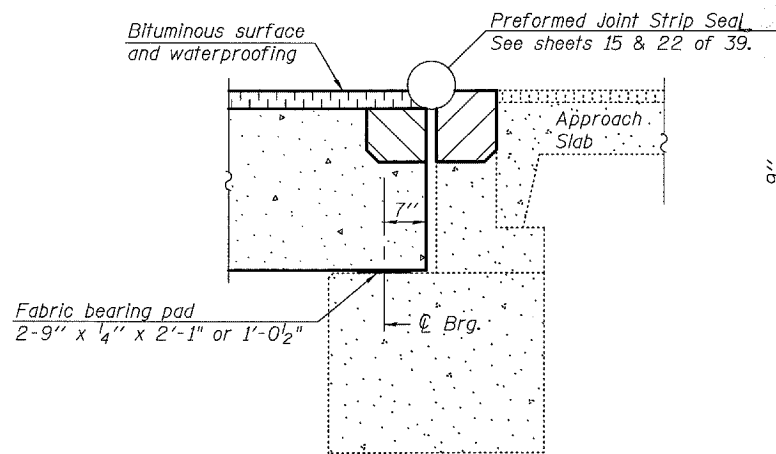


SECTION THRU PIERS 4-13 ②

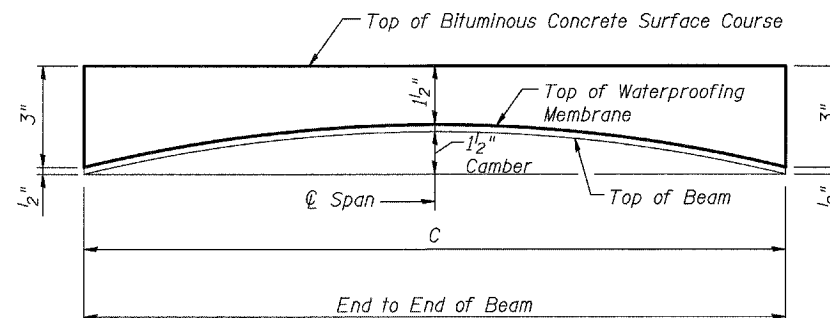
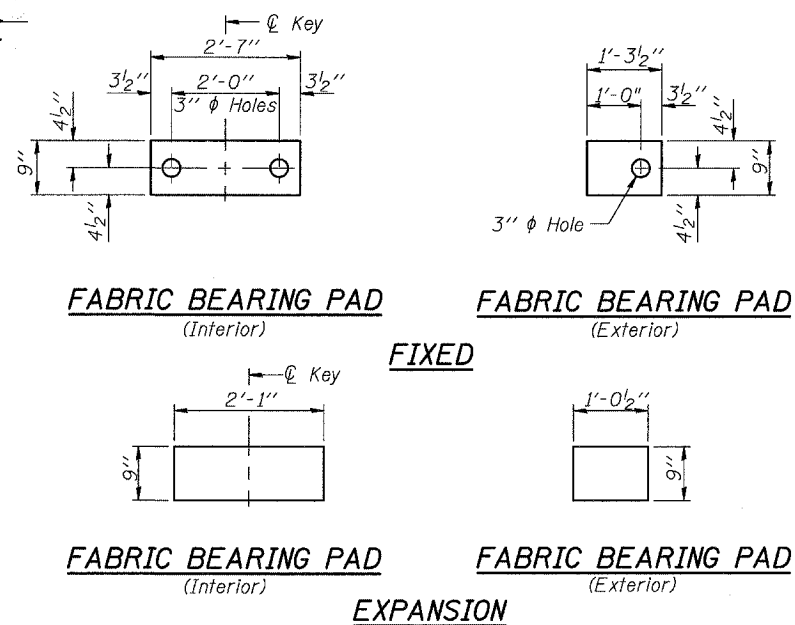


SECTION THRU PIER 14 ②

\* 1/16" gap to be filled with non-shrink grout. Dimensions may vary to accommodate tolerance in beam lengths.

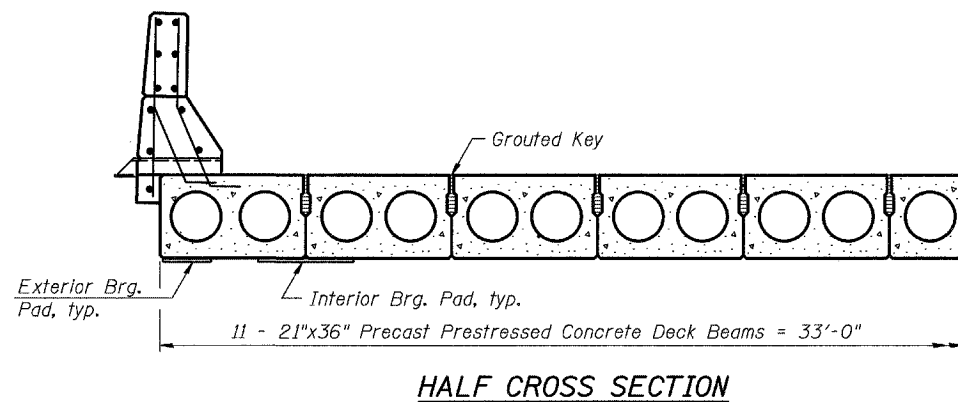


SECTION THRU EAST ABUTMENT ②



BITUMINOUS OVERLAY PROFILE SPANS 4-15 & ANTICIPATED INITIAL CAMBER DIAGRAM ③

(See Sheet 13 of 39 for Table of Beam Dimensions for dimension C.)



HALF CROSS SECTION

Notes:

- After beams have been erected, holes shall be drilled into substructure and anchor dowels placed at the fixed ends of the beams. Dowel holes shall be filled with non-shrink grout to top of beam and allowed to cure min. 24 hrs. prior to grouting the shear keys.
- Hatched area to be poured after beams are in place.
- Thicknesses shown are for Beams 1 thru 5 and 7 thru 11. Thickness for Beam 6 will vary from those shown at beam edges to 1/4" additional at Roadway.

**SUPERSTRUCTURE DETAILS**  
**OLD U.S. ROUTE 50 OVER**  
**SHOAL CREEK**  
**F.A.S. ROUTE 1780 - SECTION 24-BR-2**  
**CLINTON COUNTY**  
**STA. 102+51.47**  
**STRUCTURE NO. 014-0062**

PLOT DATE = 05/16/2006  
FILE NAME = H:\P\255004\technical\production\structural\014-0062\Final.plans\0062-14-sdt1.sh2.dgn  
PLOT SCALE = 0.1:1  
USER NAME = \$USER\$