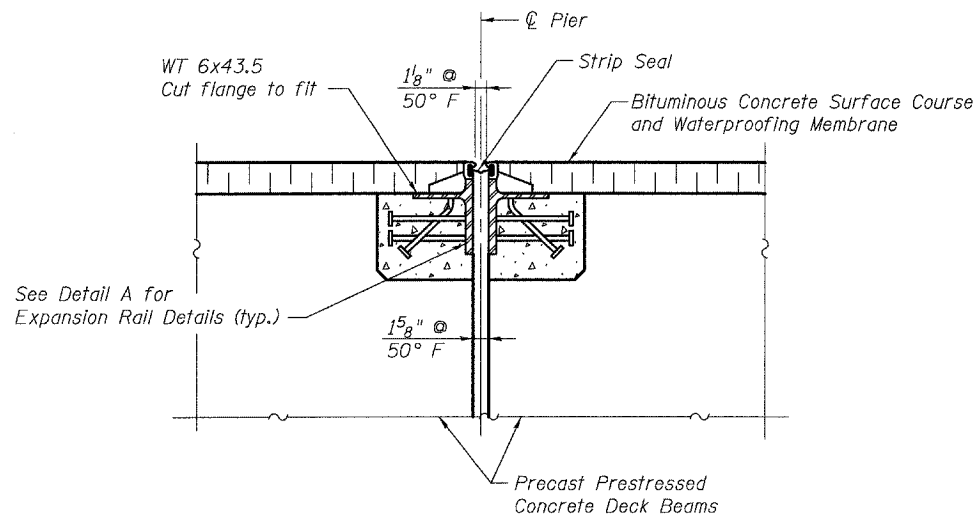


STATE OF ILLINOIS
DEPARTMENT OF TRANSPORTATION

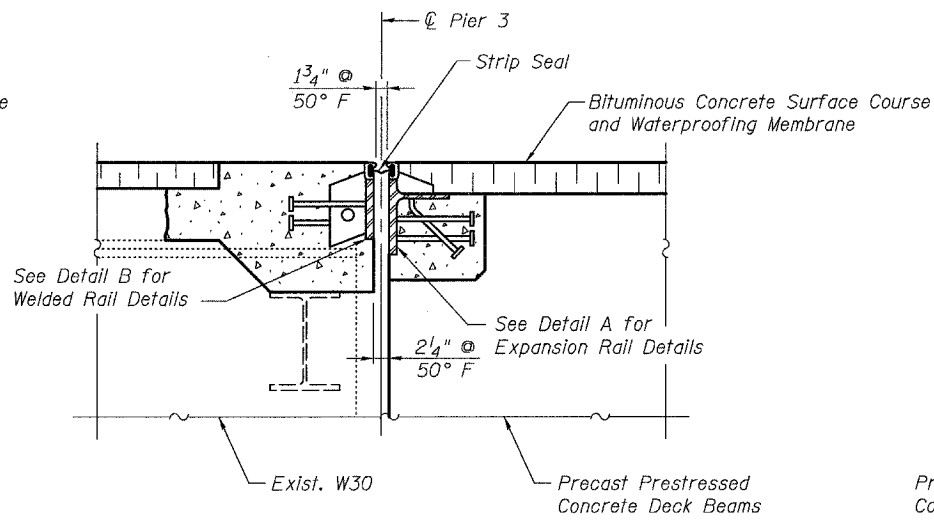
ROUTE NO.	SECTION	COUNTY	TOTAL SHEETS	SHEET NO.
-	-	-	63	39
FED. ROAD DIST. NO. 7		ILLINOIS	FED. AID PROJECT-	

SHEET NO. 1
39 SHEETS

Contract #76899

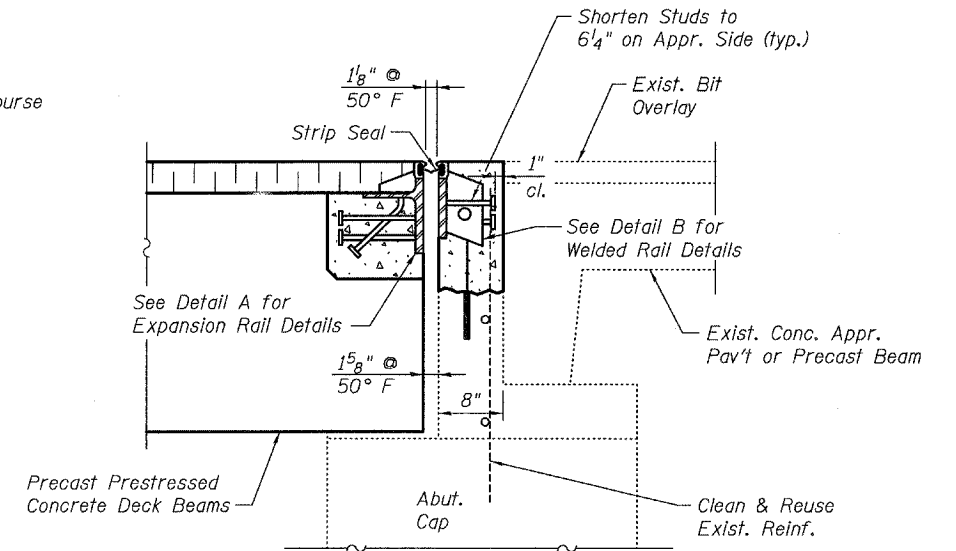


TYP. PIER JOINT (PIERS 4-13)

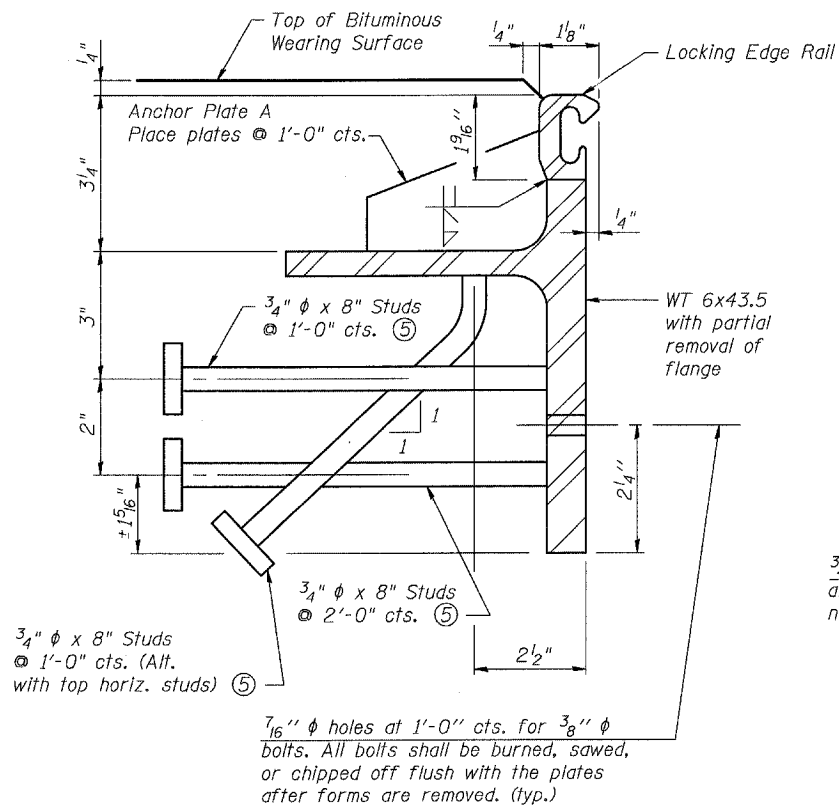


TYP. PIER JOINT (PIER 3)

(Looking North)

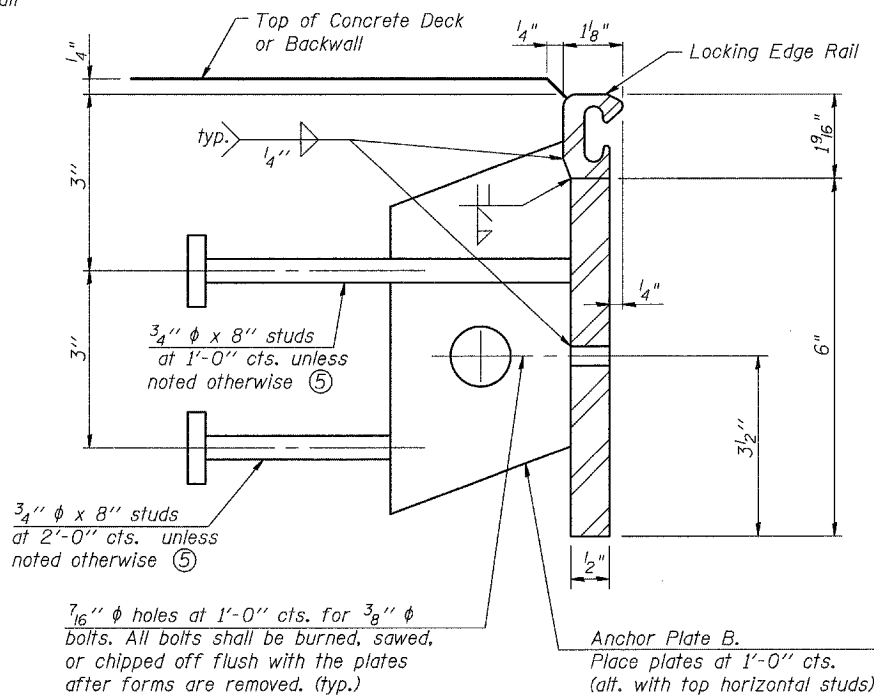


EAST ABUTMENT



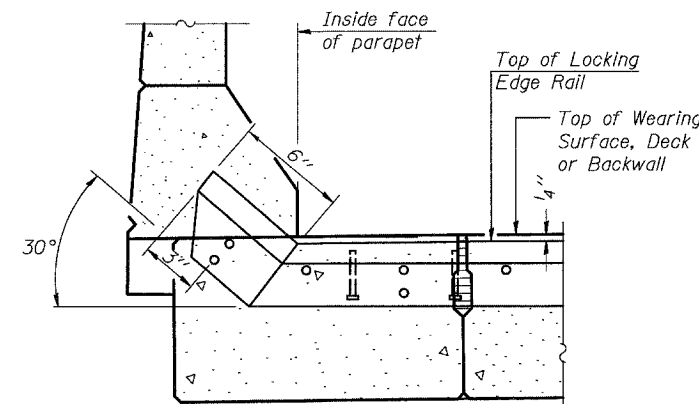
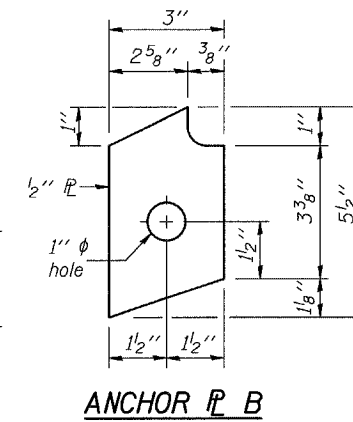
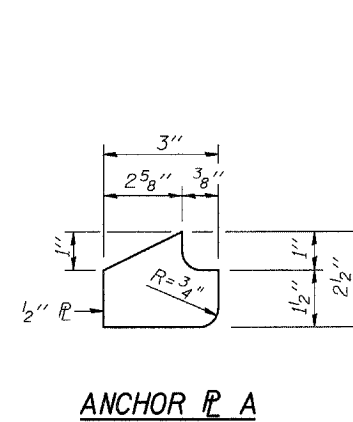
DETAIL A

(1782 Studs Required)



DETAIL B

(102 Studs Required)
(60 Anchor Plates Required)



TYPICAL END TREATMENT AT PARAPET

GENERAL NOTES

- Only the strip seal joint system will be allowed. The strip seal shall be made continuous and shall have a minimum thickness of 1/4". The configuration of the strip seal shall match the configuration of the Locking Edge Rails.
- The height and thickness of the Locking Edge Rails shown are minimum dimensions. The actual configuration of the Locking Edge Rails and matching strip seal may vary from manufacturer to manufacturer.
- Locking Edge Rails may be spliced at slope discontinuities and stage construction joints.
- The manufacturer's recommended installation methods shall be followed.
- Granular or solid flux filled headed studs conforming to Article 1006.32 of the Std. Specs. automatically end welded.
- Joint openings shall be adjusted according to Article 503.10 of the Standard Specifications when the blockouts are pour at an ambient temperature other than 50° F.

SUPERSTRUCTURE DETAILS
OLD U.S. ROUTE 50 OVER
SHOAL CREEK

F.A.S. ROUTE 1780 - SECTION 24-BR-
CLINTON COUNTY
STA. 102+51.47
STRUCTURE NO. 014-0062

PLOT DATE = 05/15/2006
FILE NAME = h:\p\25004\technical\production\structural\an_014-0062\final_plans\0062-15-ssd\shc3.dgn
PLOT SCALE = 0:1.0000 : 1 IN.
USER NAME = USER