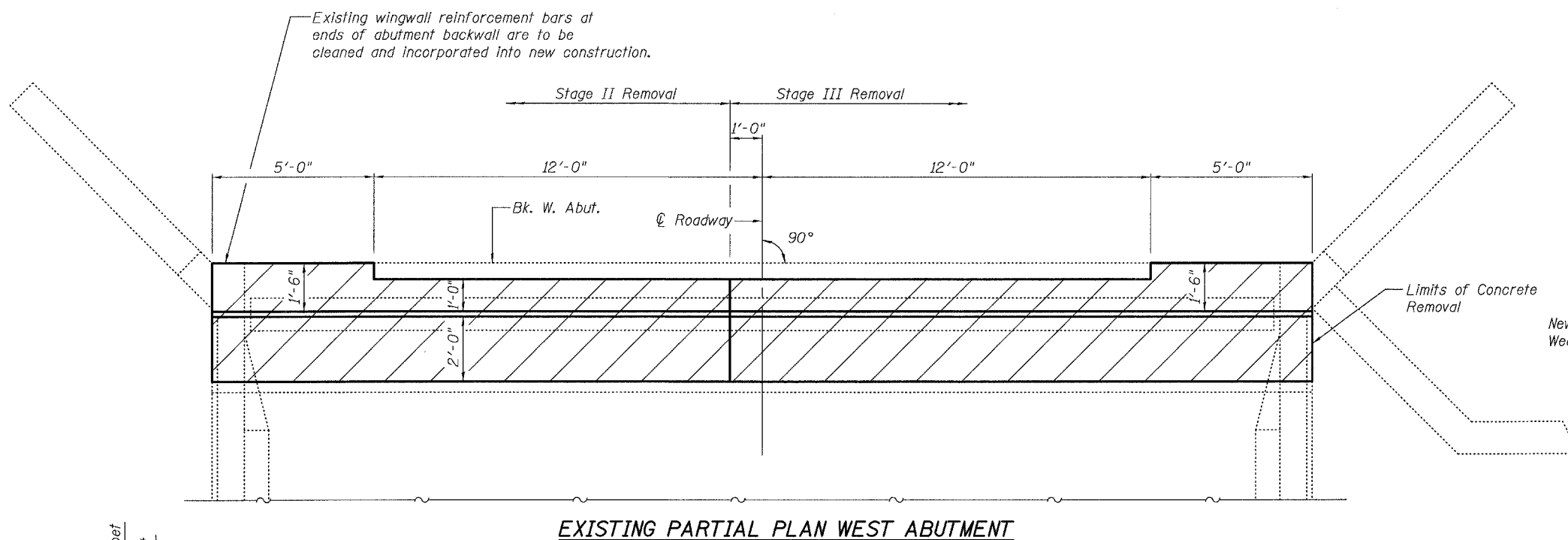
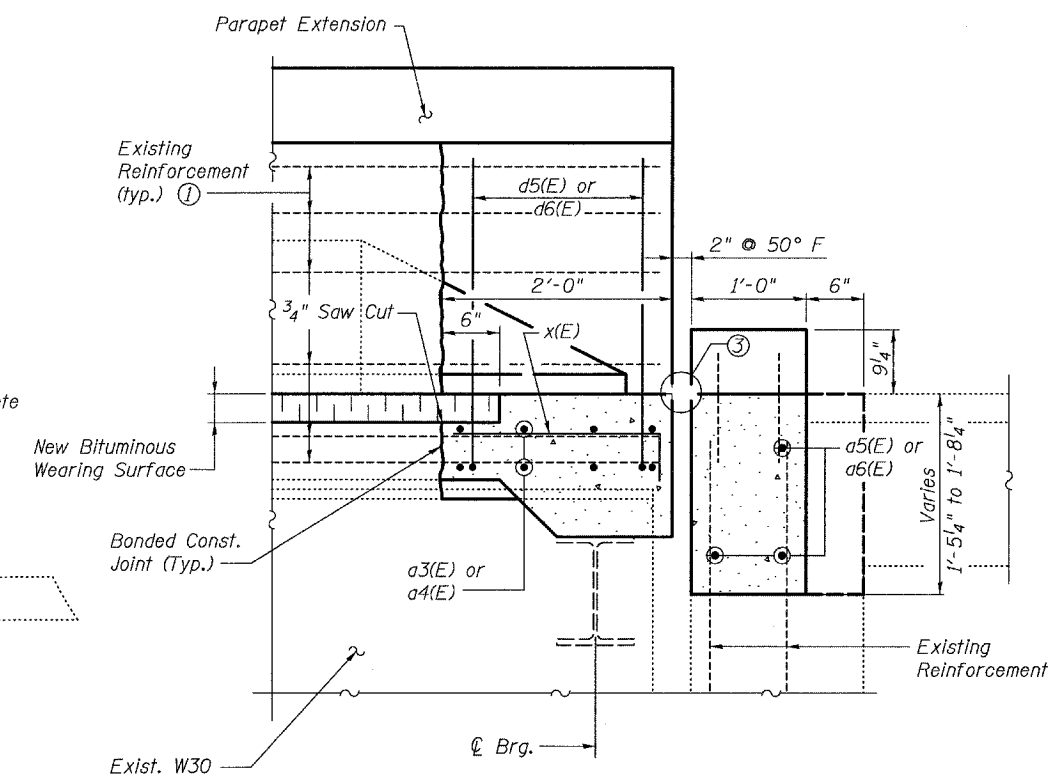


STATE OF ILLINOIS
DEPARTMENT OF TRANSPORTATION

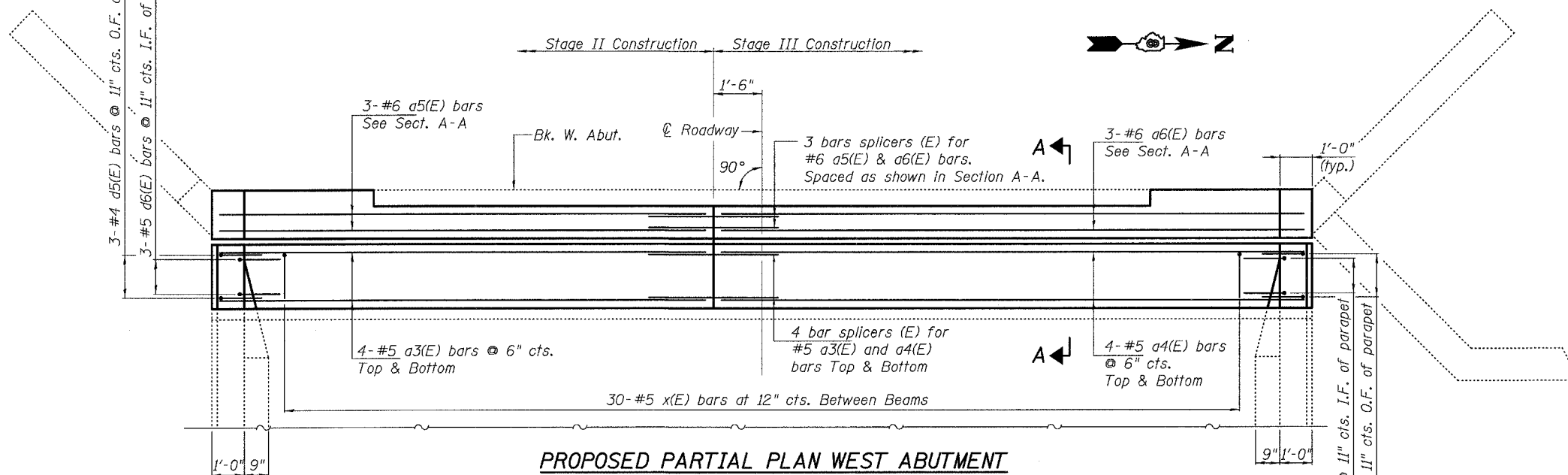
Contract #76899



EXISTING PARTIAL PLAN WEST ABUTMENT



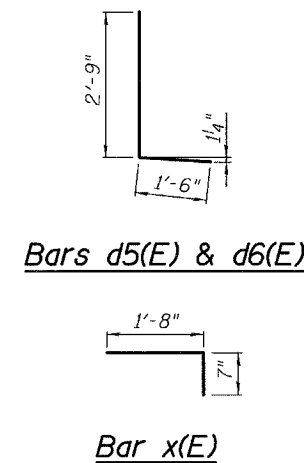
SECTION A-A



PROPOSED PARTIAL PLAN WEST ABUTMENT

BILL OF MATERIAL

Bar	No.	Size	Length	Shape	
a3(E)	8	#5	15'-0"	—	
a4(E)	8	#5	18'-0"	—	
a5(E)	3	#6	15'-2"	—	
a6(E)	3	#6	18'-2"	—	
d5(E)	6	#4	4'-3"	L	
d6(E)	6	#5	4'-3"	L	
x(E)	30	#5	2'-3"	┌	
Reinforcement Bars, Epoxy Coated				Pound	540
Concrete Superstructure				Cu. Yd.	4.7
Concrete Removal				Cu. Yd.	4.7



- Notes:
- Existing reinforcement bars shown are to be cleaned and incorporated into new construction.
 - See sheet 39 of 39 for bar splicer details.
 - See sheet 19 of 39 for neoprene expansion joint details.
 - O.F. denotes outside face. I.F. denotes inside face.
 - Any reinforcement bars that are damaged during concrete removal operations shall be repaired or replaced using an approved bar splicer or anchorage system. Cost included in Concrete Removal.

WEST ABUTMENT EXPANSION JOINT
OLD U.S. ROUTE 50 OVER
SHOAL CREEK
F.A.S. ROUTE 1780 - SECTION 24-BR-
CLINTON COUNTY
STA. 102+51.47
STRUCTURE NO. 014-0062