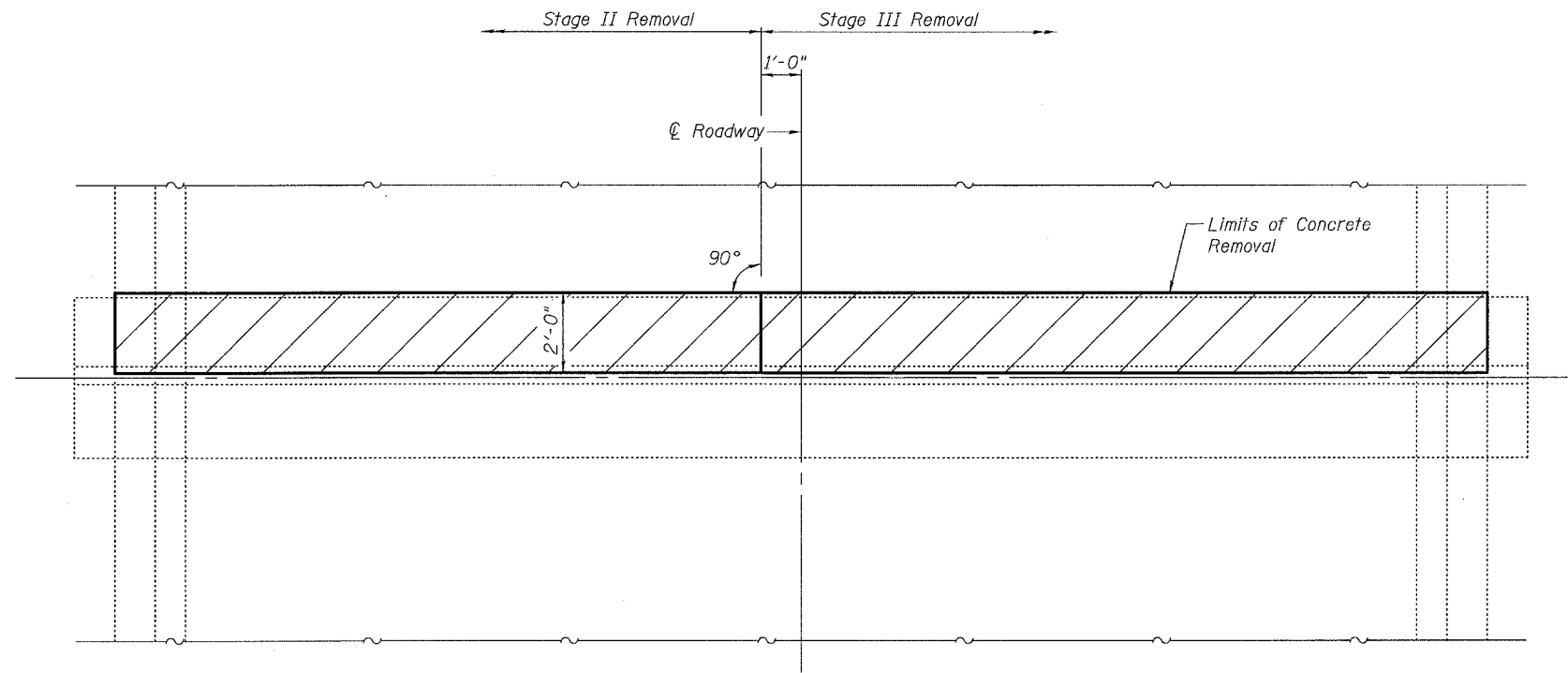


STATE OF ILLINOIS  
DEPARTMENT OF TRANSPORTATION

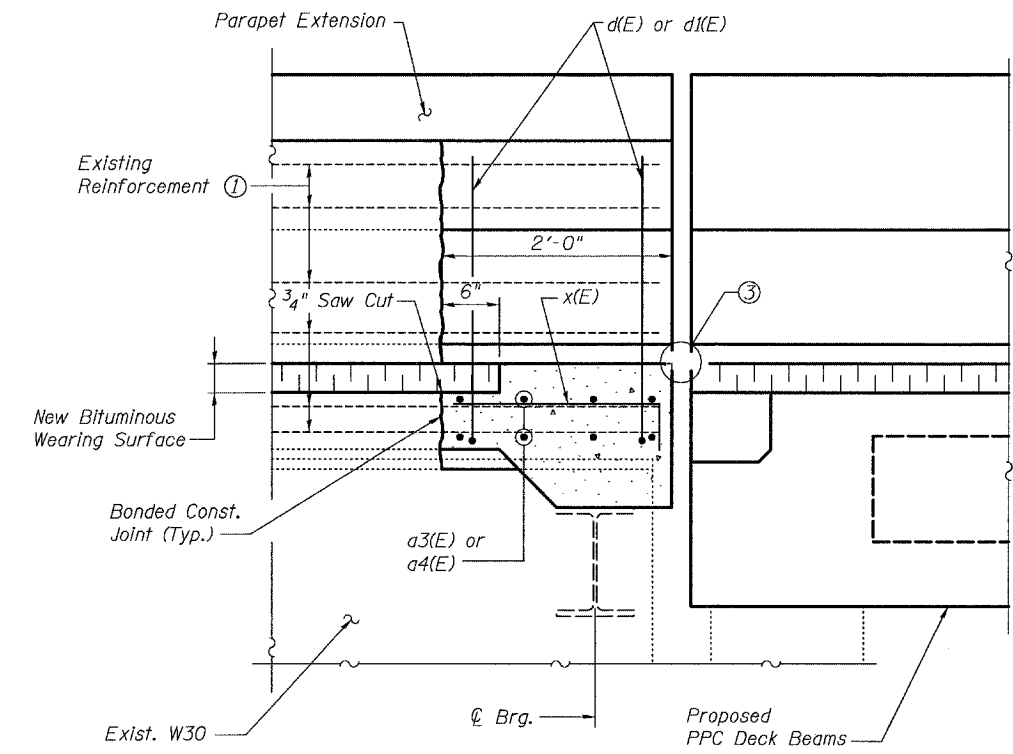
ROUTE NO.	SECTION	COUNTY	TOTAL SHEETS	SHEET NO.
-	-	-	63	45
FED. ROAD DIST. NO. 7	ILLINOIS	FED. AID PROJECT-		

SHEET NO. 2  
39 SHEETS

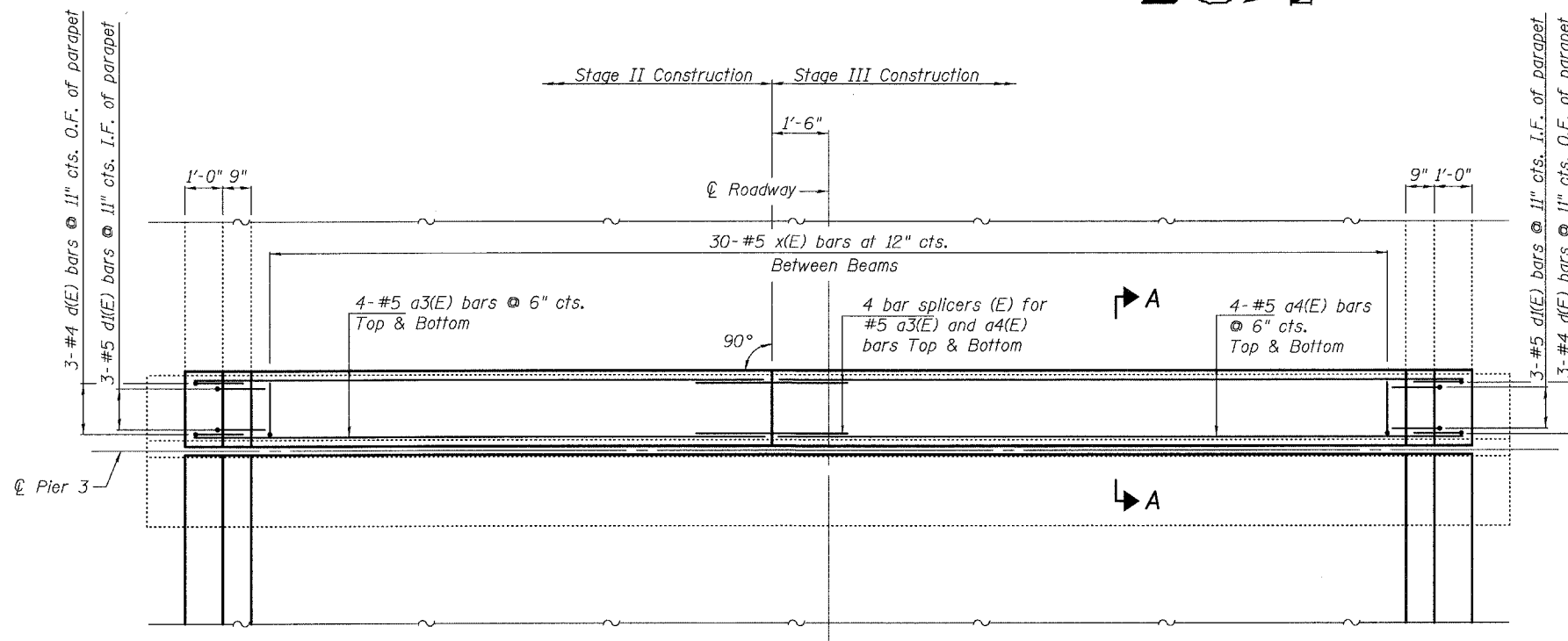
Contract #76899



EXISTING PARTIAL PLAN PIER 3



SECTION A-A



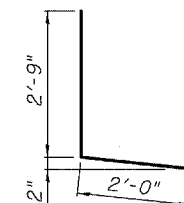
PROPOSED PARTIAL PLAN PIER 3

Notes:

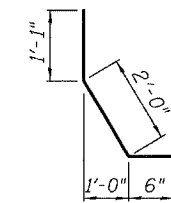
- ① Existing reinforcement bars shown are to be cleaned and incorporated into new construction.
- ② See sheet 39 of 39 for bar splicer details.
- ③ See sheet 15 of 39 for Preformed Joint Strip Seal details.
- ④ Any reinforcement bars that are damaged during concrete removal operations shall be repaired or replaced using an approved bar splicer or anchorage system. Cost included in Concrete Removal.

BILL OF MATERIAL

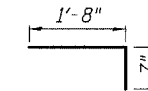
Bar	No.	Size	Length	Shape	
a3(E)	8	#5	15'-0"	—	
a4(E)	8	#5	18'-0"	—	
d(E)	6	#4	4'-9"	L	
d1(E)	6	#5	3'-7"	L	
x(E)	30	#5	2'-3"	┌	
Reinforcement Bars, Epoxy Coated				Pound	390
Concrete Superstructure				Cu. Yd.	2.7
Concrete Removal				Cu. Yd.	2.7



Bar d(E)



Bar d1(E)



Bar x(E)

PIER 3 EXPANSION JOINT  
OLD U.S. ROUTE 50 OVER  
SHOAL CREEK  
F.A.S. ROUTE 1780 - SECTION 24-BR-  
CLINTON COUNTY  
STA. 102+51.47  
STRUCTURE NO. 014-0062

PLOT DATE = 05/15/2006  
FILE NAME = h:\p\250004\technical\production\structural\van\_014-0062\final\_plans\0062-21-pier3exp\tsht.dgn  
PLOT SCALE = 0.1:0.0000 ' = 1" / IN.  
USER NAME = #USER#