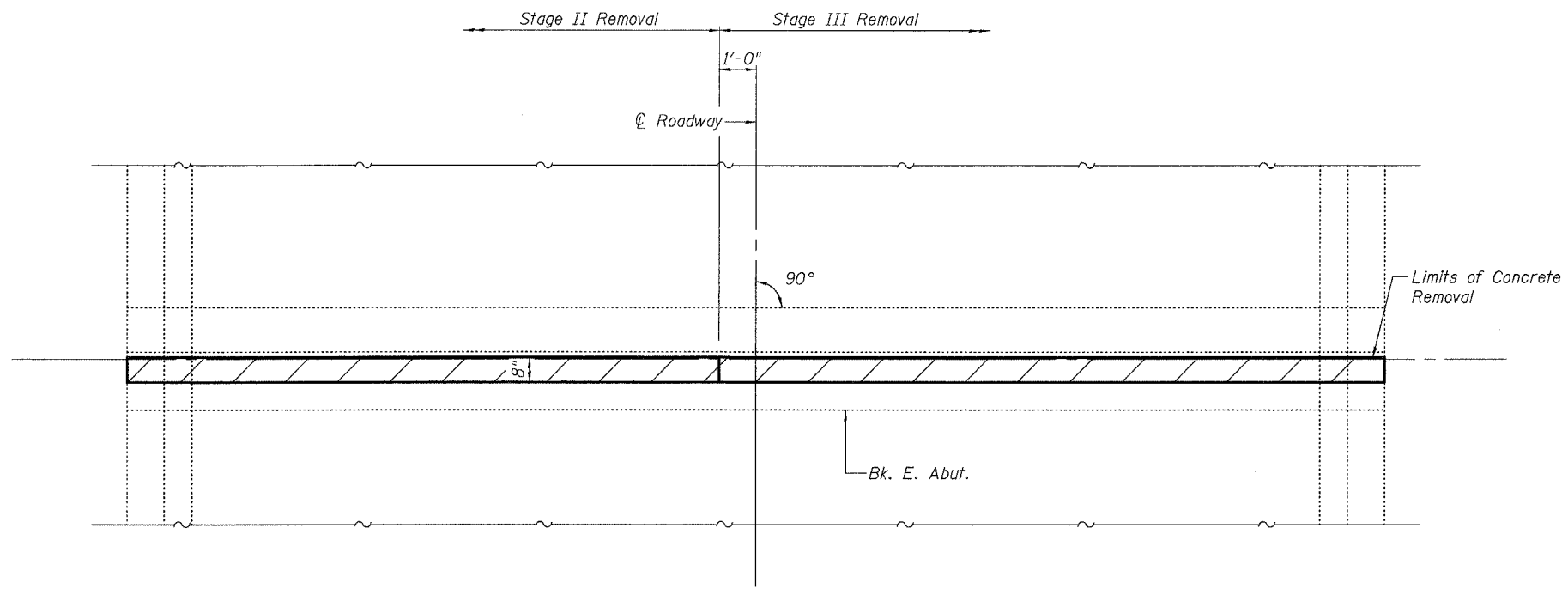


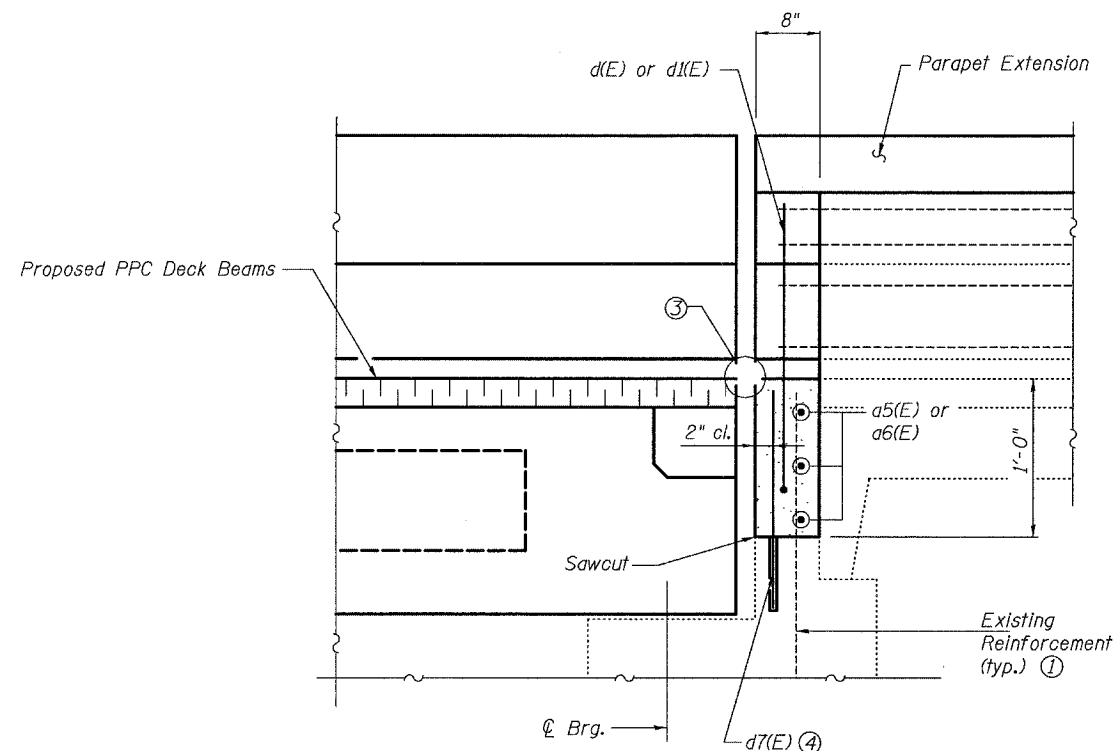
STATE OF ILLINOIS
DEPARTMENT OF TRANSPORTATION

ROUTE NO.	SECTION	COUNTY	TOTAL SHEETS	SHEET NO.	SHEET NO. 2
-	-	-	63	46	39 SHEETS
FED. ROAD DIST. NO. 7		ILLINOIS	FED. AID PROJECT-		

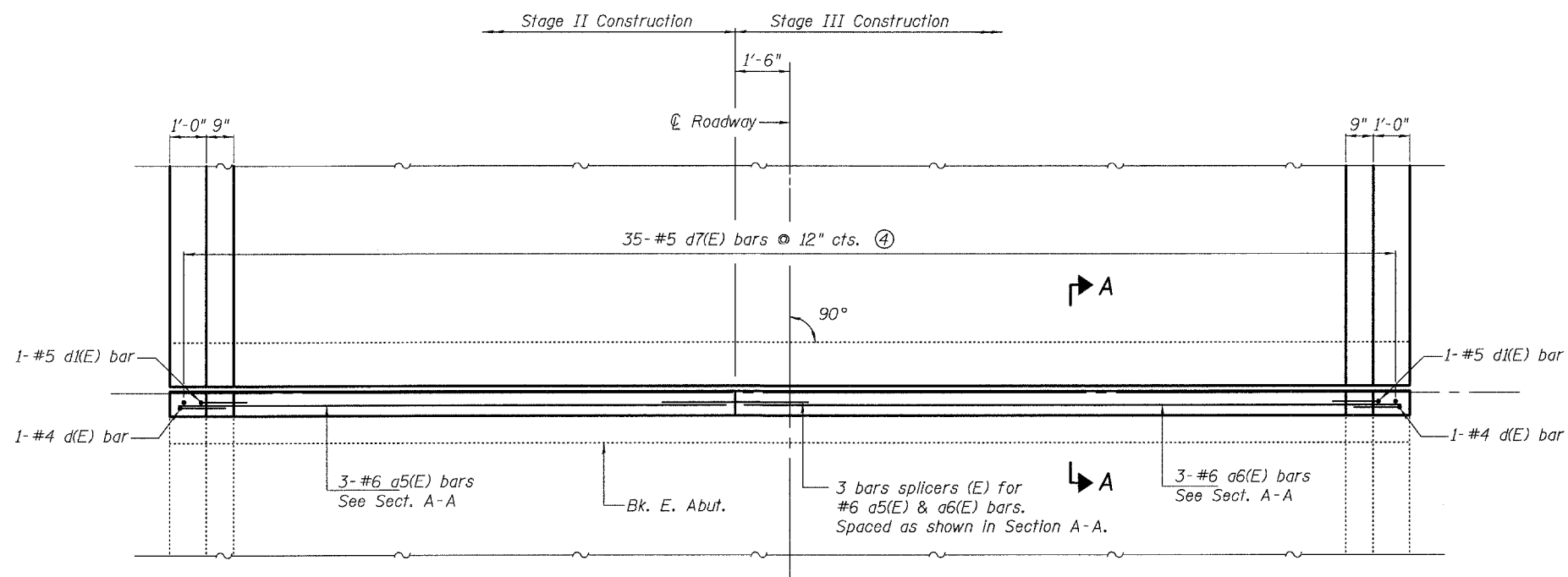
Contract #76899



EXISTING PARTIAL PLAN EAST ABUTMENT



SECTION A-A



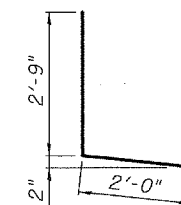
EXISTING PARTIAL PLAN EAST ABUTMENT

Notes:

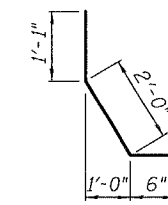
- ① Existing reinforcement bars shown are to be cleaned and incorporated into new construction.
- ② See sheet 39 of 39 for bar splicer details.
- ③ See sheet 15 of 39 for Preformed Joint Strip Seal details.
- ④ Epoxy grout d7(E) bars in 7/8"φ x 9" minimum drilled holes. The grout and the method of application shall be approved by the Department. See Section 584 of the Standard Specifications. Cost included with Reinforcement Bars, Epoxy Coated.
- ⑤ Any reinforcement bars that are damaged during concrete removal operations shall be repaired or replaced using an approved bar splicer or anchorage system. Cost included in Concrete Removal.

BILL OF MATERIAL

Bar	No.	Size	Length	Shape
a5(E)	3	#6	15'-2"	—
a6(E)	3	#6	18'-2"	—
d(E)	2	#4	3'-9"	L
d1(E)	2	#5	3'-7"	L
d7(E)	35	#5	1'-7"	—
Reinforcement Bars, Epoxy Coated			Pound	220
Concrete Superstructure			Cu. Yd.	1.9
Concrete Removal			Cu. Yd.	1.9



Bar d(E)



Bar d1(E)

EAST ABUTMENT EXPANSION JOINT
OLD U.S. ROUTE 50 OVER
SHOAL CREEK
F.A.S. ROUTE 1780 - SECTION 24-BR-2
CLINTON COUNTY
STA. 102+51.47
STRUCTURE NO. 014-0062

PLOT DATE = 05/15/2006
FILE NAME = h:\p\25004\tech\001_production\structural\an_014-0062_final_plans\0062-22-eeababutexp\jshht.dgn
PLOT SCALE = 0:1:0000 ' / IN.
USER NAME = USER#