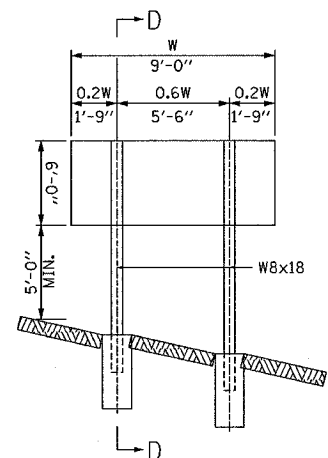
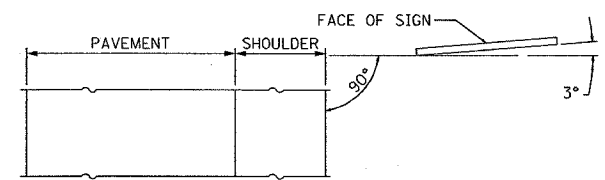


ROUTE	SECTION	COUNTY	TOTAL SHEETS	SHEET NO.
•	••	•••	52	10
STA.	TO STA.			
FED. ROAD DIST. NO.	ILLINOIS	FED. AID PROJECT		
FAI 55/70	CONTRACT# 76973			
DIST 8 ITS 2006-2				
MADISON & ST. CLAIR & CITY OF ST. LOUIS, MO				

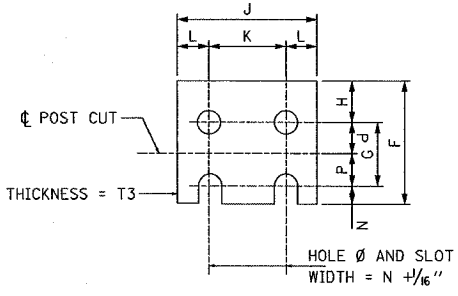


ELEVATION

SOME EQUIPMENT OMITTED FROM VIEW FOR CLARITY.



LOCATION SKETCH



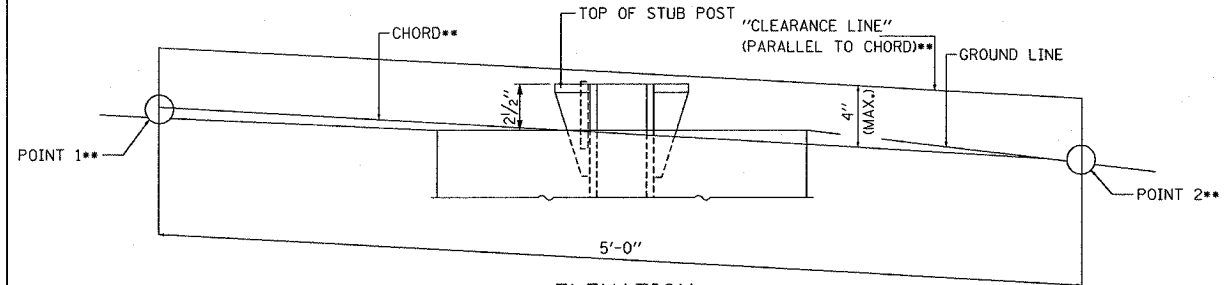
FUSE PLATE DETAIL

(INSTALL WITH NOTCHES DOWN)

FUSE PLATE DATA										
POST	N-BOLT DIAMETER	LENGTH	G	H	P	F	J	K	L	T3
W8x18	5/8"	2"	2 1/4"	1 1/4"	1 1/8"	4 9/16"	5 1/4"	2 3/4"	1 1/4"	3/8"

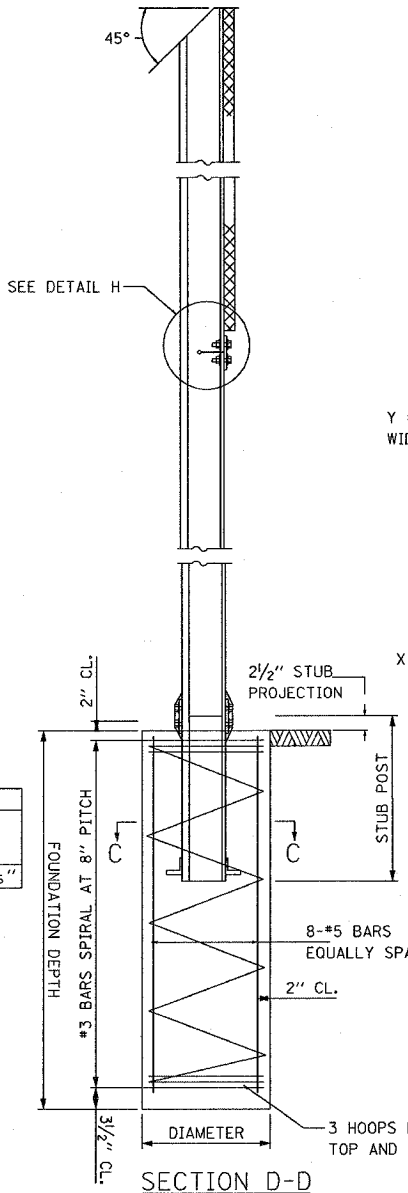
POST	CONCRETE FOUNDATION TABLE				POST TO STUB CONNECTION DATA										
	DIAMETER	MINIMUM DEPTH	CONCRETE (CU. YDS.)	VERTICAL REINFORCEMENT LENGTH	STUB POST LENGTH	BOLT SIZE	A	B	C	D	E	T1	T2	R	W
W8x18	2'-0"	6'-0"	0.70	5'-9"	2'-6"	3/4" x 3 3/4"	6"	2 1/2"	1 3/8"	3 1/4"	1 3/8"	1"	1 1/2"	1 1/2"	5/16"

- DIMENSIONAL CHANGES REQUIRED FOR VARYING SITE CONDITIONS SHALL BE APPROVED BY THE ENGINEER.
- ① QUANTITY INCLUDES ALL CONCRETE NECESSARY FOR ONE FOUNDATION.
- ② INCLUDES REINFORCEMENT BARS AND SPIRAL HOOPING FOR ONE FOUNDATION.

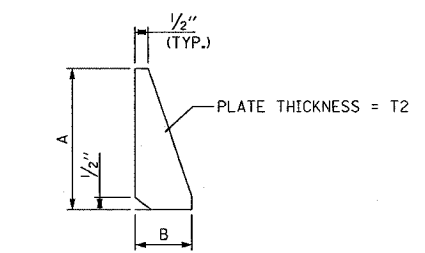


ELEVATION GROUND LINE & STUB POST

•• FOR ALL "POINT1" AND "POINT2" LOCATIONS. "CLEARANCE LINE" MUST BE AT OR ABOVE TOP OF STUB POST.

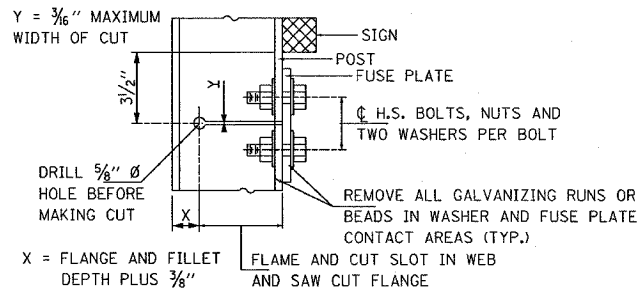


SECTION D-D

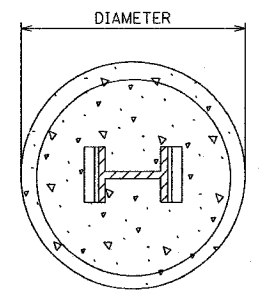


STIFFENER PLATE DETAIL

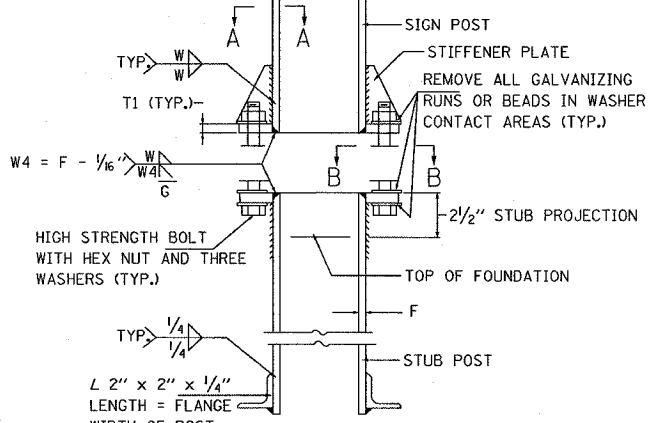
(SEE TABLE FOR DIMENSIONS)



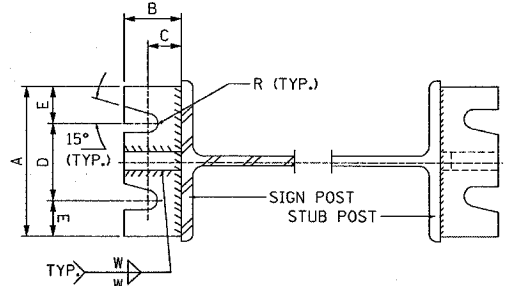
DETAIL H



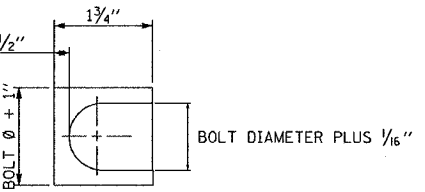
SECTION C-C



ELEVATION SIGN POST & STUB POST



SECTION A-A SECTION B-B



SHIM DETAIL

FURNISH TWO 0.01" THICK AND TWO 0.03" THICK STAINLESS STEEL OR BRASS (ASTM B36) SHIMS PER POST.

GENERAL NOTES

POSTS SHALL BE PLUMBED USING SHIMS WITH POST-TO-STUB POST CONNECTIONS BOLTS SNUG TIGHT ONLY. FINAL TIGHTENING OF ALL HIGH STRENGTH BOLTS SHALL BE IN ACCORDANCE WITH ARTICLE 505.04(F)(3), AND THREADS AT THE JUNCTION OF THE BOLT AND NUT SHALL BE BURRED OR CENTER PUNCHED TO PREVENT THE NUT FROM LOOSENING.

LOADING: 80 MPH WIND WITH 30% GUST FACTOR, NORMAL TO SIGN.
 STRUCTURAL STEEL - 20,000 P.S.I.
 REINFORCING STEEL - 20,000 P.S.I.
 CONCRETE - 1,400 P.S.I.
 FOOTING SOIL PRESSURE - 2,000 P.S.F.

AFTER FABRICATION, THE POST, FUSE PLATE AND UPPER 6" (MINIMUM) OF THE STUB POST SHALL BE HOT-DIP GALVANIZED IN ACCORDANCE WITH AASHTO M111. ALL BOLTS, NUTS AND WASHERS SHALL BE HOT-DIP GALVANIZED IN ACCORDANCE WITH AASHTO M232.

REVISIONS		ILLINOIS DEPARTMENT OF TRANSPORTATION
NAME	DATE	
		HAR SIGN DETAILS (2 OF 2) FAI 55/70 SECTION DIST 8 ITS 2006-2 MADISON AND ST. CLAIR COUNTY AND ST. LOUIS, MO DATE 5/23/2006

PLOT DATE = 5/23/2006
 FILE NAME = c:\p1686\electrical\sign\1686s.dgn
 PLOT SCALE = 1/8" = 1'-0"
 REFERENCE = #REF#