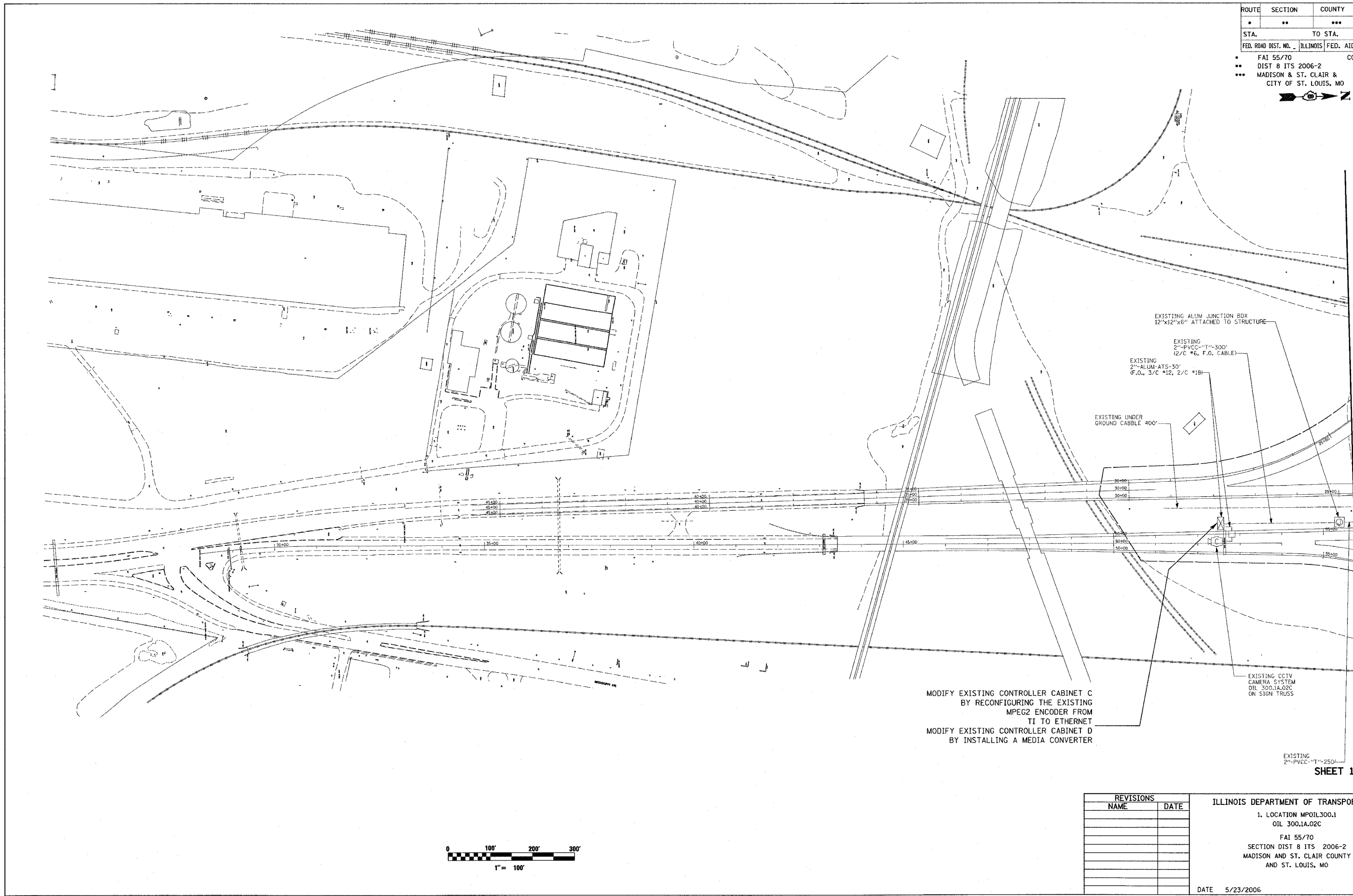


ROUTE	SECTION	COUNTY	TOTAL SHEETS	SHEET NO.
*	**	***	52	33
STA.		TO STA.		
FED. ROAD DIST. NO.	ILLINOIS	FED. AID PROJECT		
FAI 55/70		CONTRACT# 76973		
DIST 8 ITS 2006-2				
MADISON & ST. CLAIR & CITY OF ST. LOUIS, MO				



FOR CONTINUATION SEE SHEET 7

SHEET 18 OF 18

PLOT DATE = 5/23/2006
 C:\p11\11595\electrical\toprint\1806.dgn
 PLOT SCALE = 1/8"=100'
 REFERENCE = REF#

REVISIONS	
NAME	DATE

ILLINOIS DEPARTMENT OF TRANSPORTATION
 1. LOCATION MPOIL300.1
 OIL 300.1A.02C
 FAI 55/70
 SECTION DIST 8 ITS 2006-2
 MADISON AND ST. CLAIR COUNTY
 AND ST. LOUIS, MO
 DATE 5/23/2006