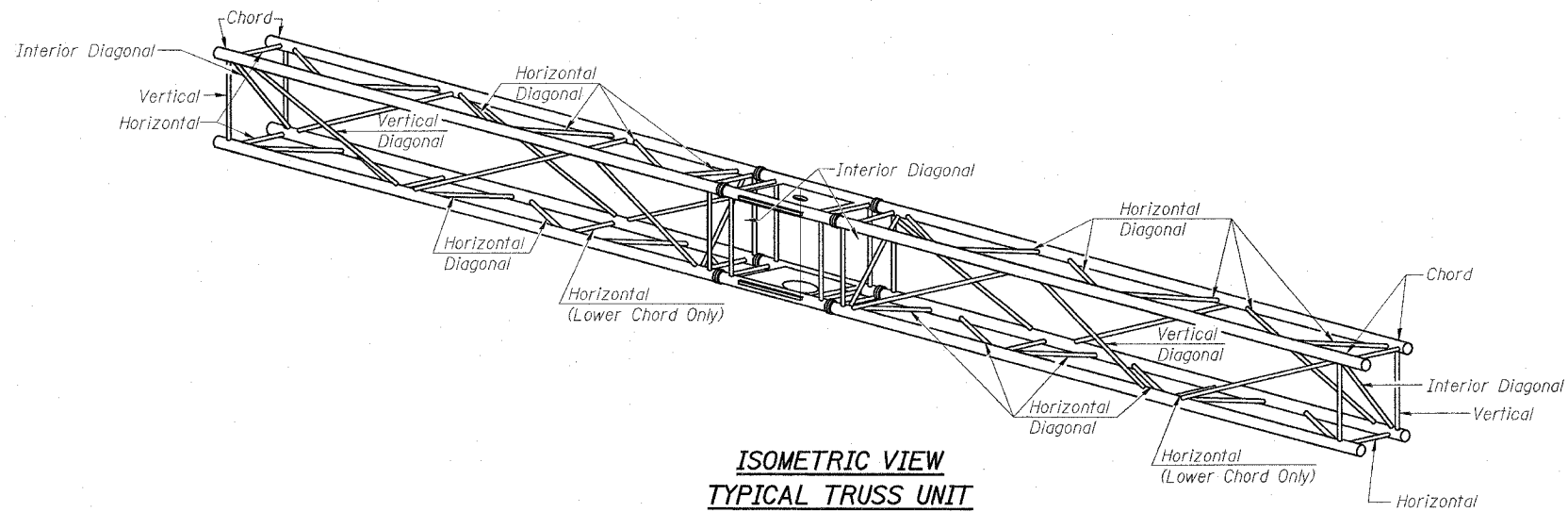
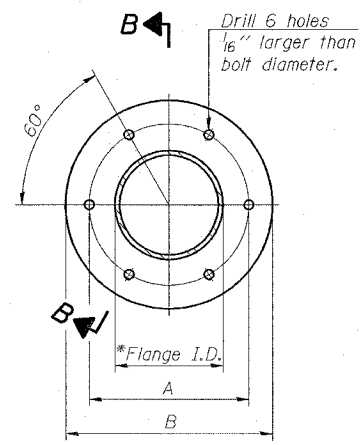


ROUTE NO.	SECTION	COUNTY	TOTAL SHEETS	SHEET NO.
FAI 55/70	***	***	52	48
FED. ROAD DIST. NO. 7	ILLINOIS	FED. AID PROJECT		

Contract #76973



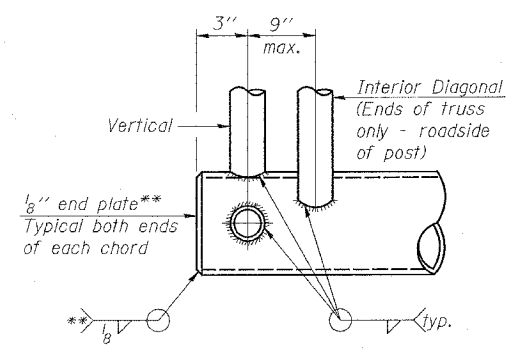
**ISOMETRIC VIEW
TYPICAL TRUSS UNIT**
ASTM B221 Alloy 6061 Temper T6



SPlicing FLANGE
ASTM b221, Alloy 6061-T6
or ASTM B209, Alloy 6061-T651

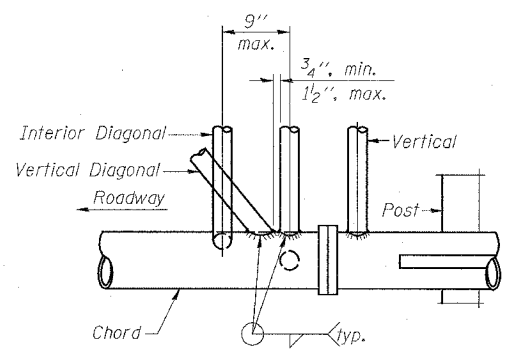
* To fit O.D. of Chord with maximum gap of 1/16".

① Splicing Flanges shall be attached to each truss unit with the truss shop assembled to camber shown. Truss units shall be in proper alignment and flange surfaces shall be shop bolted into full contact before welding. Sufficient external welds or tacks shall be made to secure flanges until remaining welds are made after disassembly. Adjacent flanges shall be "match marked" to insure proper field assembly.

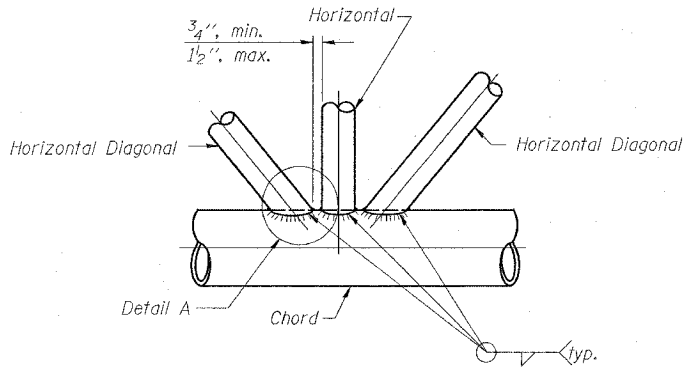


BUTTERFLY END JOINT DETAIL

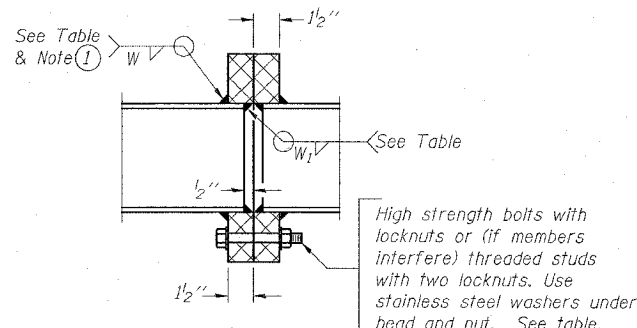
** Contractor may alternatively use standard aluminum drive-fit cap to close ends.



POST END JOINT DETAIL



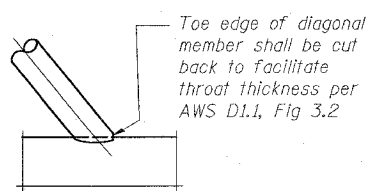
TRUSS INTERIOR JOINT DETAIL



SECTION B-B

High strength bolts with locknuts or (if members interfere) threaded studs with two locknuts. Use stainless steel washers under head and nut. See table.

Truss Type	Bolts Dia.	Weld Sizes		A	B
		W	W ₁		
I-F-A	7/8"	5/16"	1/4"	8 3/4"	11 3/4"



DETAIL A

Toe edge of diagonal member shall be cut back to facilitate throat thickness per AWS D1.1, Fig 3.2

**BUTTERFLY SIGN STRUCTURES
TRUSS DETAILS FOR FRONT ACCESS VMS
ALUMINUM TRUSS & STEEL POST**

FAI 55/70
SECTION DIST 8 ITS 2006-2
MADISON AND ST. CLAIR COUNTY
AND ST. LOUIS, MO

DESIGNED -	200
CHECKED -	EXAMINED
DRAWN -	PASSED
CHECKED -	ENGINEER OF BRIDGES AND STRUCTURES

OSF-A-2A-VMS 1-7-05

PLOT DATE = 5/23/2005
FILE NAME = c:\v\m\1685\electrical\truss\truss.dgn
PLOT SCALE = 100.4623 / IN.
REFERENCE = #REF#