

F.A.P. RTE.	SECTION	COUNTY	TOTAL SHEETS	SHEET NO.
785	132-31-1	MADISON	14	1

STATE OF ILLINOIS  
DEPARTMENT OF TRANSPORTATION  
DIVISION OF HIGHWAYS

**PROPOSED  
HIGHWAY PLANS**

FAP ROUTE 785 (IL 111/140)

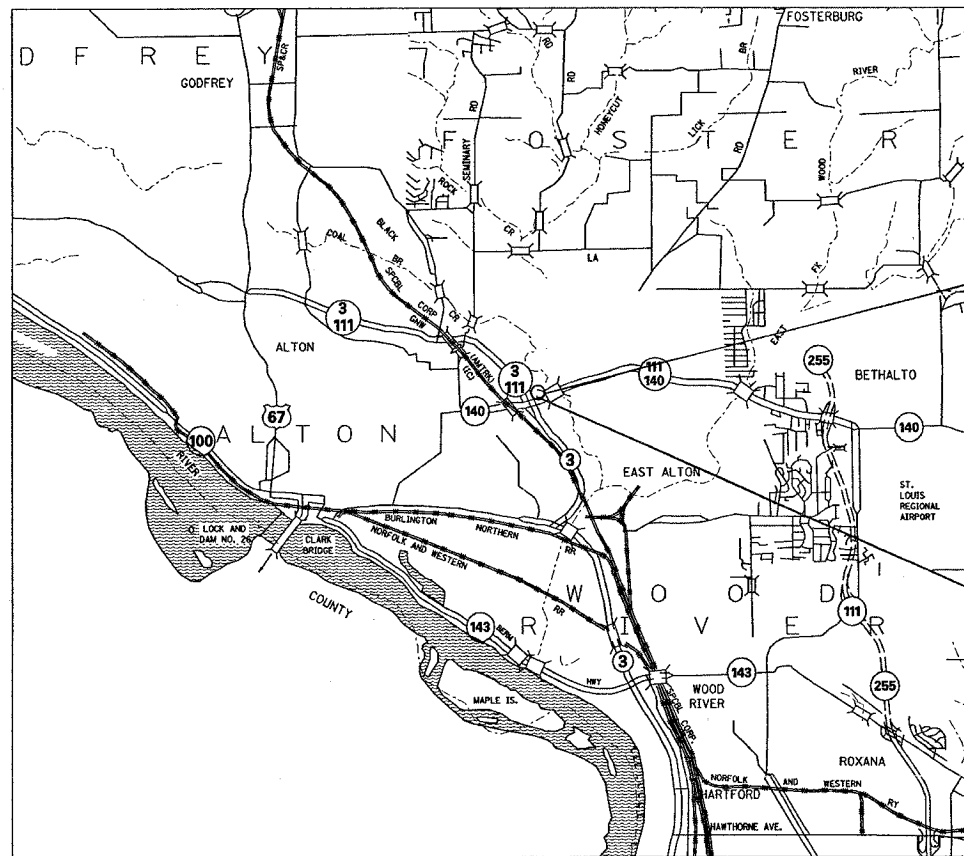
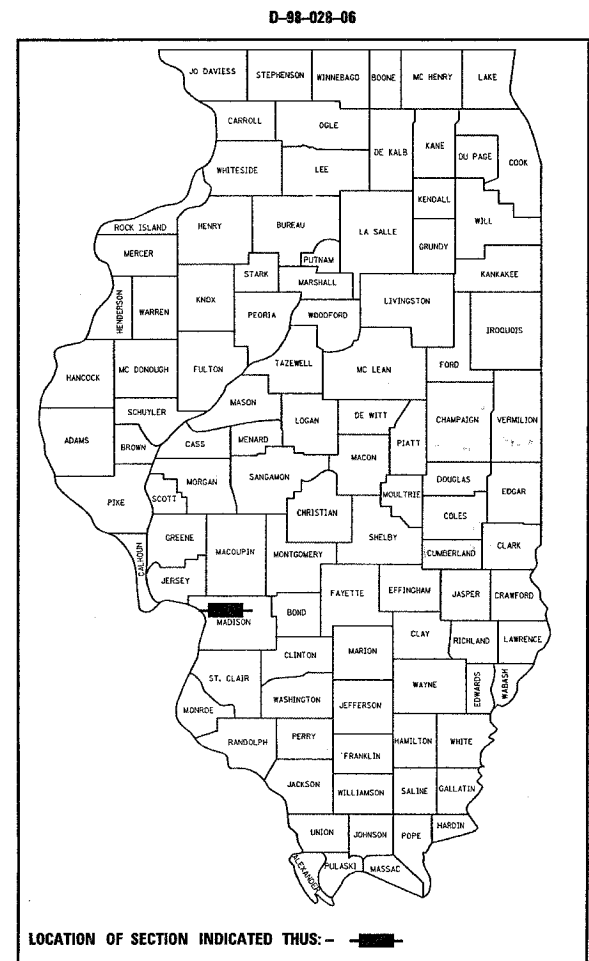
SECTION 132-31-1

**PROJECT  
MADISON COUNTY**

**SLOPE REPAIR**

**C-98-015-06**

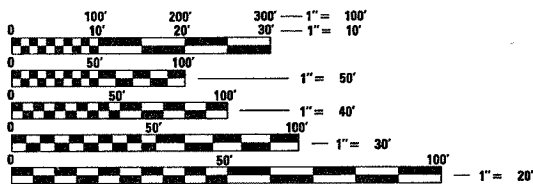
FOR INDEX OF SHEETS, SEE SHEET NO. 2



BEGIN PROJECT  
STA. 10+84

END PROJECT  
STA. 12+34

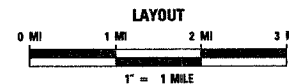
MICROFILMED \_\_\_\_\_  
REEL NUMBER \_\_\_\_\_  
AWARDED \_\_\_\_\_  
RESIDENT ENGINEER \_\_\_\_\_  
AS BUILT CHANGES WERE MADE  
ON THE FOLLOWING SHEETS



FULL SIZE PLANS HAVE BEEN PREPARED USING STANDARD  
ENGINEERING SCALES. REDUCED SIZED PLANS WILL NOT  
CONFORM TO STANDARD SCALES. IN MAKING MEASUREMENTS  
ON REDUCED PLANS, THE ABOVE SCALES MAY BE USED.

J.U.L.I.E.  
JOINT UTILITY LOCATION INFORMATION FOR EXCAVATION  
1-800-892-0123

TRAFFIC DATA  
2006 ADT = 12,900 (ESTIMATED)  
SU = 4.3%  
MU = 1.9%



GROSS AND NET LENGTH = 150 FT = 0.02 MILES

LAT: 38.90622  
LONG: -90.12661

CONTRACT NO. 76988

PROJECT ENGINEER: WENDA SOUTHERLAND (618)346-3159  
SQUAD LEADER: GREG HANCOCK (618) 346-3195

STATE OF ILLINOIS  
DEPARTMENT OF TRANSPORTATION  
DIVISION OF HIGHWAYS

SUBMITTED May 19, 2006  
May Crami  
DEPUTY DIRECTOR OF HIGHWAYS  
REGION FIVE ENGINEER

June 30, 2006  
Mike Hine  
ENGINEER OF DESIGN AND ENVIRONMENT

June 30, 2006  
Milton R. Seas, P.E.  
DIRECTOR, DIVISION OF HIGHWAYS

**PRINTED BY THE AUTHORITY  
OF THE STATE OF ILLINOIS**

F.A. RTE.	SECTION	COUNTY	TOTAL SHEETS	SHEET NO.
785	132-31-1	MADISON	14	2
STA.		TO STA.		
FED. ROAD DIST. NO.	ILLINOIS	FED. AID PROJECT		

**GENERAL NOTES**

- THE STANDARDS AND REVISION NUMBERS LISTED SHALL APPLY TO THIS PROJECT.
- ILLINOIS STATE LAW REQUIRES A 48-HOUR NOTICE BE GIVEN TO UTILITIES BEFORE DIGGING. FIELD MARKING OF FACILITIES MAY BE OBTAINED BY CONTACTING J.U.L.I.E. OR FOR NON-MEMBERS, THE UTILITY COMPANY DIRECTLY. AGENCIES KNOWN TO HAVE FACILITIES WITHIN THE PROJECT AREA ARE AS FOLLOWS:
  - CITY OF ALTON (WATER AND SANITARY SEWER)
  - AMERENUE (GAS AND ELECTRIC)
  - CHARTER COMMUNICATIONS, INC. (CABLE TV)
  - ILLINOIS AMERICAN WATER CO. (WATER)
  - SBC (COMMUNICATIONS)

(MEMBERS OF J.U.L.I.E. (800) 892-0123 ARE INDICATED BY \* NON J.U.L.I.E. MEMBERS MUST BE NOTIFIED INDIVIDUALLY).

- WHERE SECTION OR SUB-SECTION MONUMENTS ARE ENCOUNTERED THE ENGINEER SHALL BE NOTIFIED BEFORE SUCH MONUMENTS ARE REMOVED. THE CONTRACTOR SHALL PROTECT AND CAREFULLY PRESERVE ALL PROPERTY MARKERS AND MONUMENTS UNTIL THE OWNER, AN AUTHORIZED SURVEYOR, OR AGENT HAS WITNESSED OR OTHERWISE REFERENCED THE LOCATION.
- NO OVERNIGHT LANE CLOSURES SHALL BE ALLOWED ON THE PROJECT.
- ROAD CONSTRUCTION AHEAD SIGNS SHALL BE PLACED AT THE BEGINNING AND END OF THE PROJECT PLUS THE INTERSECTING SIDE ROADS, AND WILL BE INCLUDED IN THE TRAFFIC CONTROL PAY ITEMS. ALL CONSTRUCTION SIGNS SHALL BE FLUORESCENT ORANGE (48"x48").

- FLAGGERS SHALL BE PRESENT DURING ALL CLOSURE HOURS, INCLUDING LUNCH HOUR, AND NO ADDITIONAL COMPENSATION SHALL BE ALLOWED.
- THE CONTRACTOR SHALL VERIFY ALL DIMENSIONS AND CONDITIONS IN THE FIELD PRIOR TO CONSTRUCTION AND ORDERING OF MATERIALS.
- REMOVE SHEET PILING - REMOVE THE GUARDRAIL USED AS SHEET PILING. THE STEEL SHEET PILING SHALL REMAIN IN PLACE.
- THE PERMANENT STEEL SHEET PILING SHALL BE BALL AND SOCKET CONNECTED ACCORDING TO THE MANUFACTURERS SPECIFICATIONS.

- THE WATER LINE LOCATION IS PROVIDED FROM PERMIT INFORMATION (NOT SURVEYED - LEVEL D). AN ABANDONED WATERLINE (NOT SHOWN) RUNS PARALLEL APPROXIMATELY 5 FEET NORTH OF WATERLINE. THE CONTRACTOR IS STILL REQUIRED TO FIELD VERIFY UTILITY LOCATIONS. THE ABANDONED WATER LINE SHALL BE REMOVED AS DIRECTED BY THE ENGINEER. THE COST SHALL BE INCLUDED WITH THE PAY ITEM SLOPE MATTRESS 6".
- THE CONTRACTOR MAY REMOVE THE RAIL ELEMENT OF THE GUARDRAIL WITH THE APPROVAL OF THE ENGINEER. THE CONTRACTOR SHALL REATTACH THE RAIL BEFORE OPENING TO TRAFFIC. NO PAYMENT WILL BE MADE FOR THIS WORK.
- ANY DAMAGE TO THE GUARDRAIL INCURRED BY THE CONTRACTOR'S OPERATIONS SHALL BE REPAIRED BY THE CONTRACTOR AT THE CONTRACTOR'S EXPENSE AND AS DIRECTED BY THE ENGINEER.
- THE EXISTING 12" CMP AT STA. 11+94 SHALL BE CUT TO THE CONTOUR OF SLOPE MATTRESS AS DIRECTED BY THE ENGINEER. THE COST SHALL BE INCLUDED WITH THE PAY ITEM SLOPE MATTRESS 6".
- THE EXISTING TEMPORARY CONCRETE BARRIER LOCATED IN THE SLOPE REPAIR AREA SHALL BE REMOVED AND DISPOSED OF BY THE CONTRACTOR. THE COST SHALL BE INCLUDED IN THE PAY ITEM SLOPE MATTRESS 6". THE TEMPORARY CONCRETE BARRIERS AT THE ENTRANCE SHALL REMAIN.

**EROSION CONTROL**

- THE DISTRICT'S NUCLEAR DENSITY SUPERVISOR SHALL BE CONTACTED BEFORE EARTHWORK COMMENCES.
- THE DISTRICT'S GEOTECHNICAL ENGINEER SHALL BE CONTACTED AT (618) 346-3313 BEFORE PLACEMENT OF THE SLOPE MATTRESS.
- IF ANY UNSUITABLE MATERIAL IS ENCOUNTERED DURING CONSTRUCTION, IT WILL BE NECESSARY TO REMOVE THE UNSUITABLE MATERIAL AND REPLACE IT WITH A SUITABLE MATERIAL AS APPROVED BY THE ENGINEER.
- ALL EROSION CONTROL PRODUCTS FURNISHED SHALL BE SPECIFICALLY RECOMMENDED BY THE MANUFACTURE FOR THE USE SPECIFIED IN THE EROSION CONTROL PLAN. PRIOR TO THE APPROVAL AND USE OF THE PRODUCT, THE CONTRACTOR SHALL SUBMITT TO THE ENGINEER A NOTARIZED CERTIFICATE BY THE PRODUCER STATING THE INTENDED USE OF THE PRODUCT AND THAT THE PHYSICAL PROPERTIES REQUIRED FOR THIS APPLICATION ARE MET OR EXCEEDED. THE CONTRACTOR SHALL PROVIDE MANUFACTURES RECOMMENDED INSTALLATION PROCEDURES TO FACILITATE THE ENGINEER IN CONSTRUCTION INSPECTION.
- THE PROPOSED EMBANKMENT SHALL BE BENCHED INTO THE EXISTING SLOPES TO THE SATISFACTION OF THE ENGINEER.
- NEWLY CONSTRUCTED SLOPES MUST BE COVERED IMMEDIATELY WITH SLOPE MATTRESS OR SEEDING TO PREVENT ANY EROSION.

**INDEX OF SHEETS**

- COVER SHEET
- INDEX OF SHEETS, STANDARDS, COMMITMENTS, AND GENERAL NOTES
- SUMMARY OF QUANTITIES
- SCHEDULES
- PLAN VIEW REMOVAL
- PLAN VIEW
- DETAILS
- 8-14 CROSS SECTIONS

**STANDARDS**

- 701101-01
- 701106-01
- 701601-04
- 702001-06

**COMMITMENTS**

NONE

PLOT DATE \* 8/2/2006  
 FILE NAME \* c:\projects\ad22085\plan\plan\ad22085.dgn  
 PLOT SCALE \* 50.0000 / IN.  
 REFERENCE \* REF\*

REVISIONS	
NAME	DATE

ILLINOIS DEPARTMENT OF TRANSPORTATION  
**INDEX OF SHEETS, STANDARDS,  
 COMMITMENTS, AND GENERAL NOTES**  
 FAP 785  
 SECTION 132-31-1  
 MADISON COUNTY

SCALE: VERT.      DRAWN BY  
 HORIZ.              CHECKED BY  
 DATE

F.A.P. RTE.	SECTION	COUNTY	TOTAL SHEETS	SHEET NO.
785	132-3I-1	MADISON	14	3
STA.		TO STA.		
FED. ROAD DIST. NO.		ILLINOIS FED. AID PROJECT		

# SUMMARY OF QUANTITIES

SUMMARY OF QUANTITIES			CONSTRUCTION TYPE CODE		
CODE NO	ITEM	UNIT	TOTAL QUANTITIES	100% STATE URBAN Y009	
20100110	TREE REMOVAL ( 6 TO 15 UNITS DIAMETER)	UNIT	218	218	
20100210	TREE REMOVAL (OVER 15 UNITS DIAMETER)	UNIT	128	128	
20300100	CHANNEL EXCAVATION	CU YD	742	742	
25000200	SEEDING, CLASS 2	ACRE	0.1	0.1	
25000400	NITROGEN FERTILIZER NUTRIENT	POUND	9	9	
25000500	PHOSPHORUS FERTILIZER NUTRIENT	POUND	9	9	
25000600	POTASSIUM FERTILIZER NUTRIENT	POUND	9	9	
25100115	MULCH, METHOD 2	ACRE	0.1	0.1	
28000400	PERIMETER EROSION BARRIER	FOOT	172	172	
28101700	RIPRAP, SPECIAL	TON	4	4	
28200200	FILTER FABRIC	SQ YD	784	784	
28400400	SLOPE MATTRESS 6"	SQ YD	808	808	
67100100	MOBILIZATION	L SUM	1	1	
70102630	TRAFFIC CONTROL AND PROTECTION, STANDARD 701601	L SUM	1	1	
X0321837	REMOVE SHEET PILING	L SUM	1	1	
X0329857	POLYURETHANE MATERIAL	POUND	300	300	
X5121800	PERMANENT STEEL SHEET PILING	SQ FT	800	800	

SUMMARY OF QUANTITIES				CONSTRUCTION TYPE CODE		
CODE NO	ITEM	UNIT	TOTAL QUANTITIES			

F.A. RTE.	SECTION	COUNTY	TOTAL SHEETS	SHEET NO.
785	132-3I-1	MADISON	14	4
STA.		TO STA.		
FED. ROAD DIST. NO.	ILLINOIS	FED. AID PROJECT		

EARTHWORK SCHEDULE		
LOCATION STATION	CHANNEL EXCAVATION CU YD	EMBANKMENT CU YD
STA. 10+78.65 TO STA. 10+80	3.50	0.70
STA. 10+80 TO STA. 10+90	35.80	16.10
STA. 10+90 TO STA. 11+00	11.00	28.80
STA. 11+00 TO STA. 11+10	7.30	50.50
STA. 11+10 TO STA. 11+12.02	2.10	14.60
STA. 11+12.02 TO STA. 11+20	14.60	83.10
STA. 11+20 TO STA. 11+30	38.90	128.20
STA. 11+30 TO STA. 11+40	60.80	96.50
STA. 11+40 TO STA. 11+50	69.00	60.40
STA. 11+50 TO STA. 11+60	80.40	40.60
STA. 11+60 TO STA. 11+70	88.00	37.00
STA. 11+70 TO STA. 11+80	72.50	46.50
STA. 11+80 TO STA. 11+90	55.00	37.60
STA. 11+90 TO STA. 12+00	40.70	27.30
STA. 12+00 TO STA. 12+10	32.00	18.00
STA. 12+10 TO STA. 12+20	30.80	10.00
STA. 12+20 TO STA. 12+30	25.40	14.30
STA. 12+30 TO STA. 12+40	19.50	15.10
STA. 12+40 TO STA. 12+40.69	0.70	0.30
TOTAL	688.00	725.60
FURNISH EXCAVATION 38 CU YD		

PLOT DATE = 5/18/2006  
 FILE NAME = I:\Projects\76988\132-3I-1\132-3I-1.dgn  
 PLOT SCALE = 50,0000' / IN.  
 REFERENCE = #REF#

REVISIONS		ILLINOIS DEPARTMENT OF TRANSPORTATION <i>SCHEDULES</i>
NAME	DATE	
		FAP 785 SECTION 132-3I-1 MADISON COUNTY  SCALE: VERT.     DRAWN BY DATE     HORIZ.     CHECKED BY

*Rev.*

F.A.P. RTE.	SECTION	COUNTY	TOTAL SHEETS	SHEET NO.
785	132-31-1	MADISON	14	5
STA.		TO STA.		
FED. ROAD DIST. NO.	ILLINOIS	FED. AID PROJECT		



PLOT DATE = 5/18/2006  
 PLOT SCALE = 2"=100'  
 REFERENCE = #REF#

X TREE REMOVAL (6 TO 15 UNITS DIAMETER)

REVISIONS	
NAME	DATE

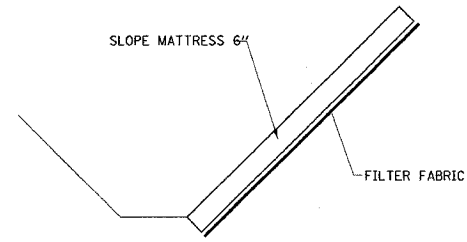
ILLINOIS DEPARTMENT OF TRANSPORTATION  
**PLAN VIEW  
 REMOVAL**  
 FAP ROUTE 785  
 SECTION 132-31-1  
 MADISON COUNTY

SCALE: VERT. \_\_\_\_\_  
 HORIZ. \_\_\_\_\_  
 DATE \_\_\_\_\_

DRAWN BY \_\_\_\_\_  
 CHECKED BY \_\_\_\_\_



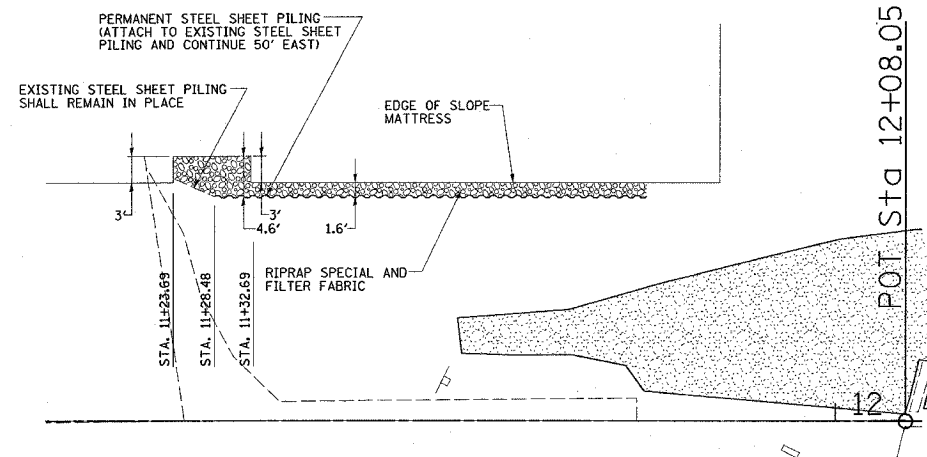
F.A.P. RTE.	SECTION	COUNTY	TOTAL SHEETS	SHEET NO.
785	132-31-1	MADISON	14	7
STA.		TO STA.		
FED. ROAD DIST. NO.	ILLINOIS	FED. AID PROJECT		



DETAIL A



PERMANENT STEEL SHEET PILING CONNECTION



DETAIL B

PLOT DATE = 5/16/2005  
 FILE NAME = C:\Users\j... \My Documents\76988\132-31-1\132-31-1.dgn  
 PLOT SCALE = 20.00000 // IN.  
 REFERENCE = #REF#

REVISIONS	
NAME	DATE

ILLINOIS DEPARTMENT OF TRANSPORTATION  
**DETAILS**  
 FAP ROUTE 785  
 SECTION 132-31-1  
 MADISON COUNTY

SCALE: VERT. \_\_\_\_\_  
 HORIZ. \_\_\_\_\_  
 DATE \_\_\_\_\_

DRAWN BY \_\_\_\_\_  
 CHECKED BY \_\_\_\_\_

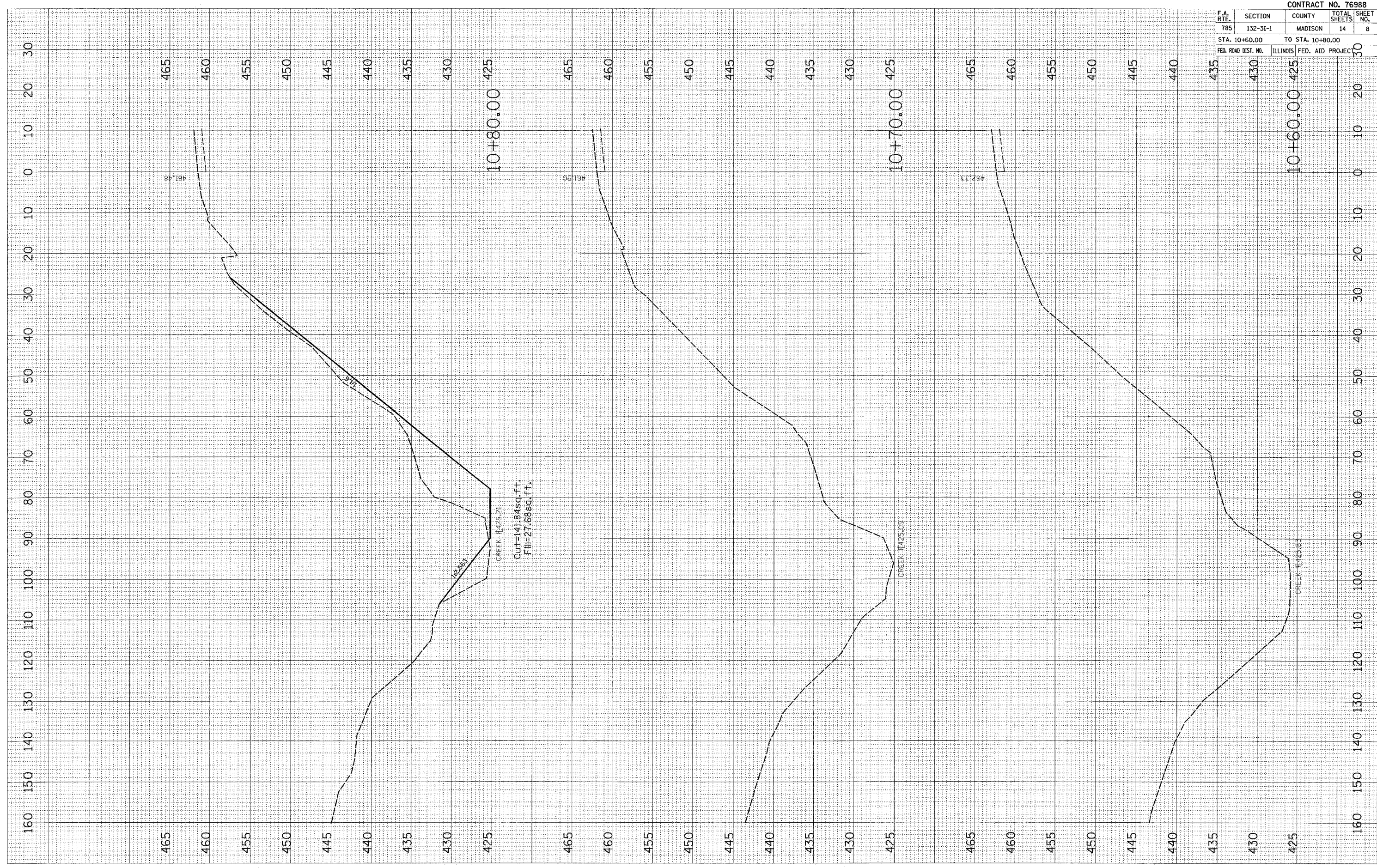
PLOT DATE = 5/15/2006  
 FILE NAME = C:\p1\10+60.00\10+60.00.dwg  
 PLOT SCALE = 1/8" = 1' IN.  
 USER NAME = sm10mo

ORIGINAL SURVEY  
 SV ED  
 PLG. ED  
 PLOTTED  
 AREA CHECKED  
 NO.

FINAL SURVEY  
 SURVEYED  
 PLOTTED  
 NOTE BOOK  
 AREA CHECKED  
 NO.

BY

DATE



CONTRACT NO. 76988

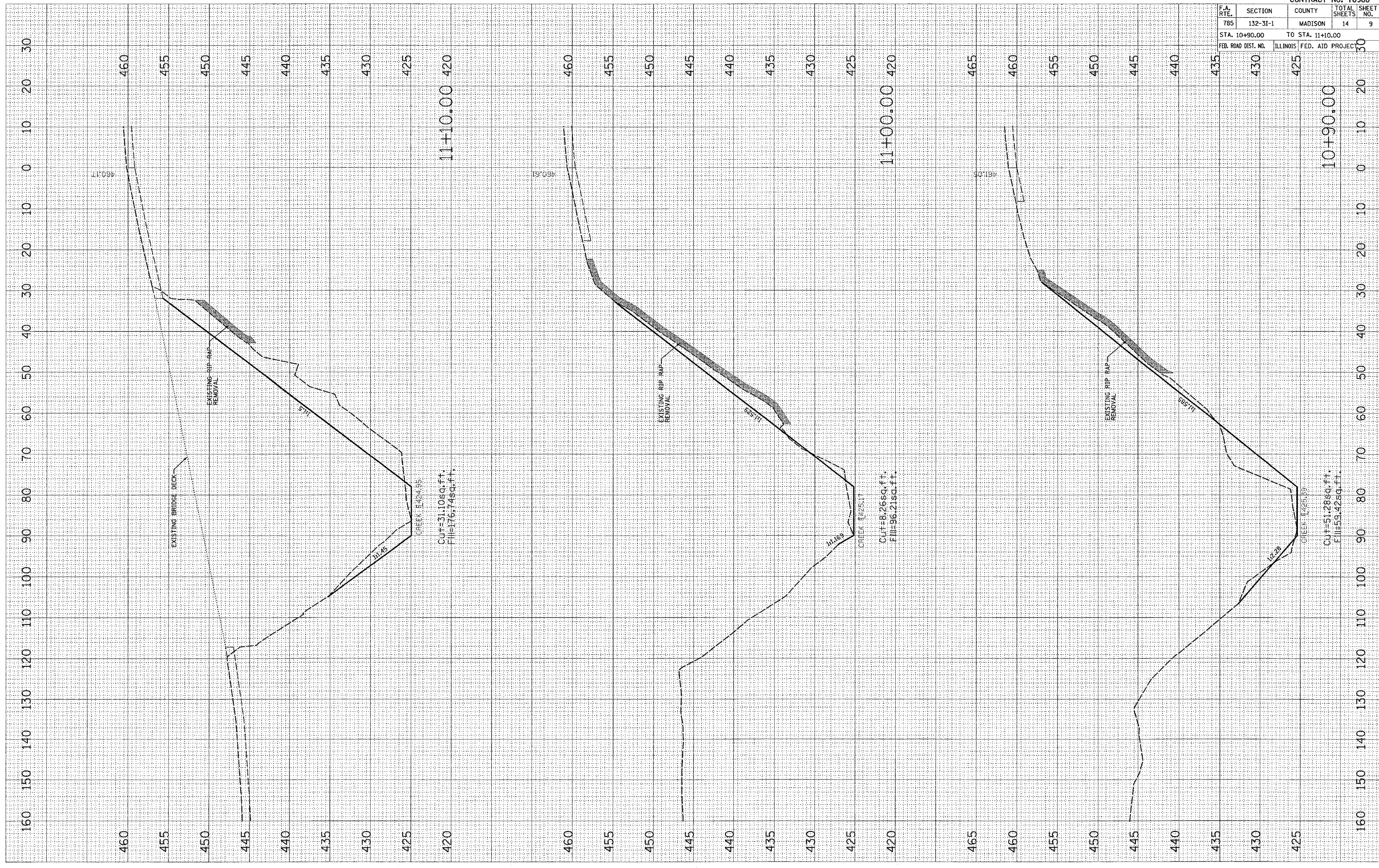
F.A. RTE.	SECTION	COUNTY	TOTAL SHEETS	SHEET NO.
785	132-31-1	MADISON	14	8
STA. 10+60.00		TO STA. 10+80.00		30
FED. ROAD DIST. NO.	ILLINOIS	FED. AID PROJECT		



PLOT DATE = 5/18/2006  
 FILE NAME = c:\pvc\pcta\ed2286\plan\stah\stah2286.dwg  
 PLOT SCALE = 10.0000' / 1" / IN.  
 USER NAME = amthms

ORIGINAL SURVEY  
 SU NO. \_\_\_\_\_  
 DATE \_\_\_\_\_  
 BY \_\_\_\_\_  
 SURVEYED \_\_\_\_\_  
 TEMPLATE \_\_\_\_\_  
 NOTE BOOK \_\_\_\_\_  
 AREAS \_\_\_\_\_  
 AREAS CHECKED \_\_\_\_\_  
 NO. \_\_\_\_\_

FINAL SURVEY  
 SU NO. \_\_\_\_\_  
 DATE \_\_\_\_\_  
 BY \_\_\_\_\_  
 SURVEYED \_\_\_\_\_  
 TEMPLATE \_\_\_\_\_  
 NOTE BOOK \_\_\_\_\_  
 AREAS \_\_\_\_\_  
 AREAS CHECKED \_\_\_\_\_  
 NO. \_\_\_\_\_



F.A. RTE.	SECTION	COUNTY	TOTAL SHEETS	SHEET NO.
785	132-3I-1	MADISON	14	9

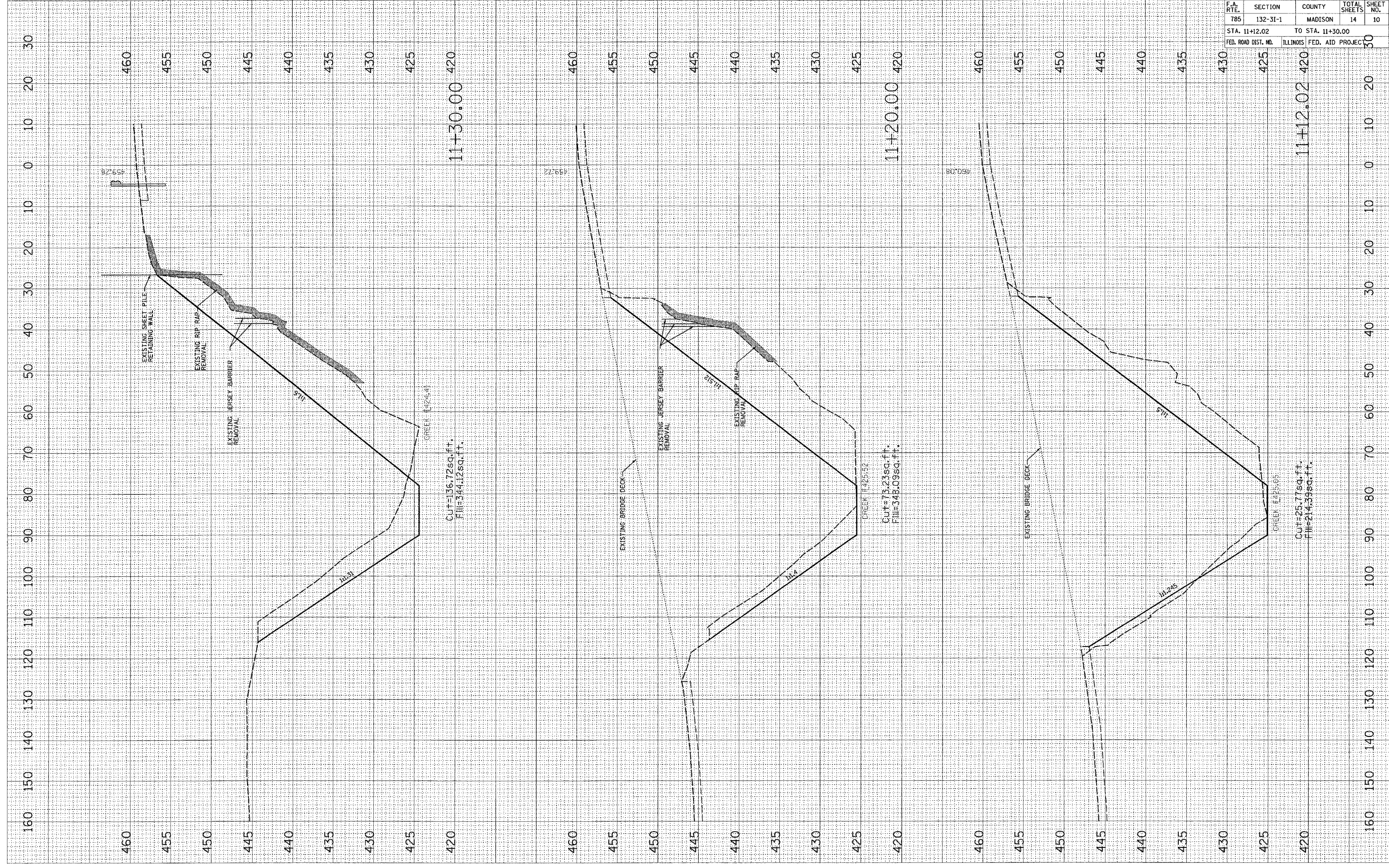
STA. 10+90.00 TO STA. 11+10.00  
 FED. ROAD DIST. NO. ILLINOIS FED. AID PROJECT

PLOT DATE = 8/18/2006  
 FILE NAME = c:\pcc\pcc3\11+12.02\11+12.02.dwg  
 PLOT SCALE = 10.0000" / 1"  
 USER NAME = amthms

ORIGINAL SURVEY  
 SU TO  
 PL. #  
 AREA CHECKED

FINAL SURVEY  
 SURVEYED  
 PLOTTED  
 NOTE BOOK  
 AREAS CHECKED

BY  
 DATE



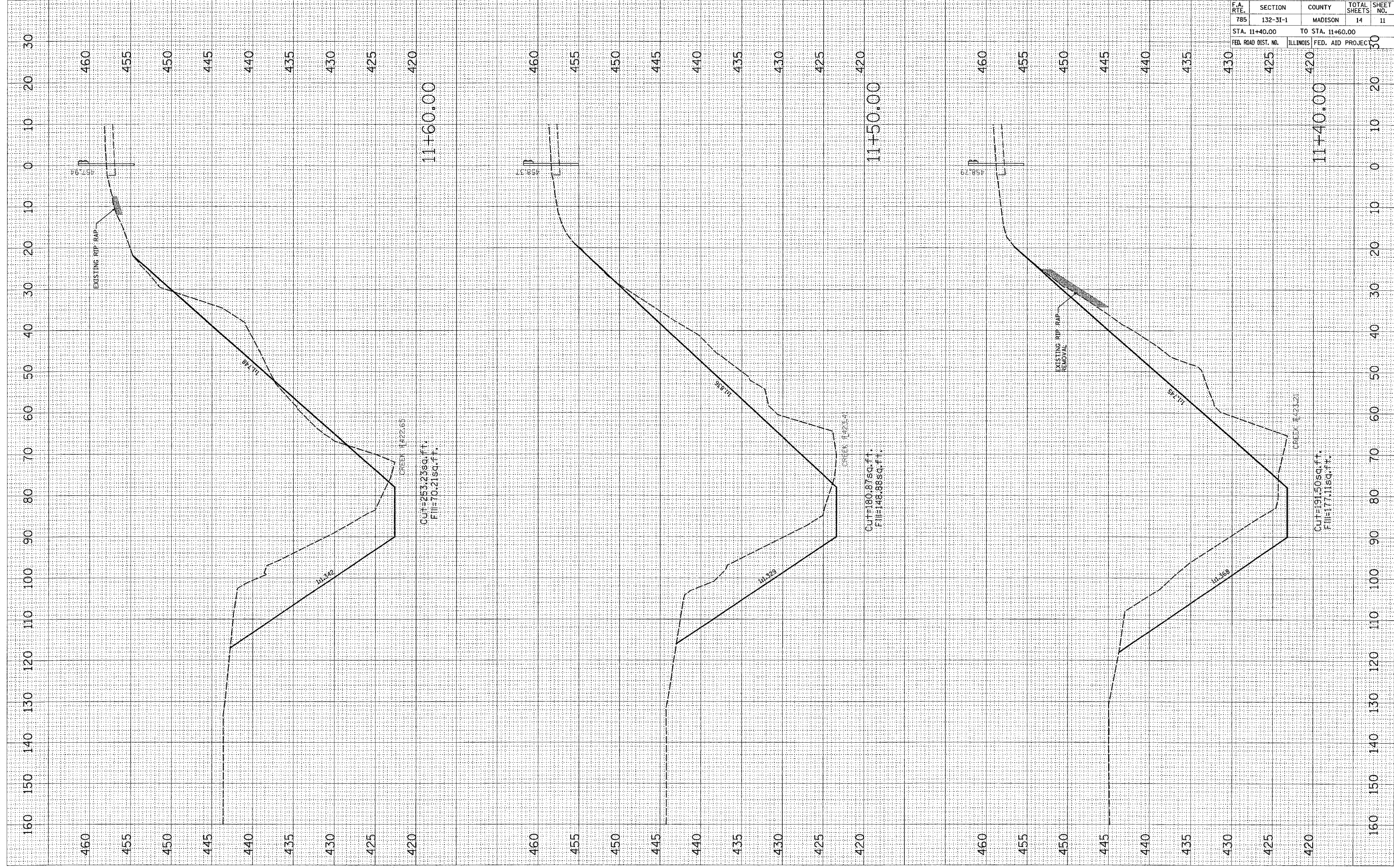
F.A. RTE.	SECTION	COUNTY	TOTAL SHEETS	SHEET NO.
785	132-3I-1	MADISON	14	10
STA. 11+12.02		TO STA. 11+30.00		
FED. ROAD DIST. NO.		ILLINOIS FED. AID PROJECT		

PLOT DATE = 5/18/2006  
 FILE NAME = c:\pvc\pvc\aed2886\plan\sheet2886.dgn  
 PLOT SCALE = 1/8"=1'-0"  
 USER NAME = amthms

ORIGINAL SURVEY  
 SURV. TO  
 PLOT DATE  
 AREA CHECKED

FINAL SURVEY  
 SURVEYED  
 PLOTTED  
 NOTE BOOK  
 AREA CHECKED

BY  
 DATE



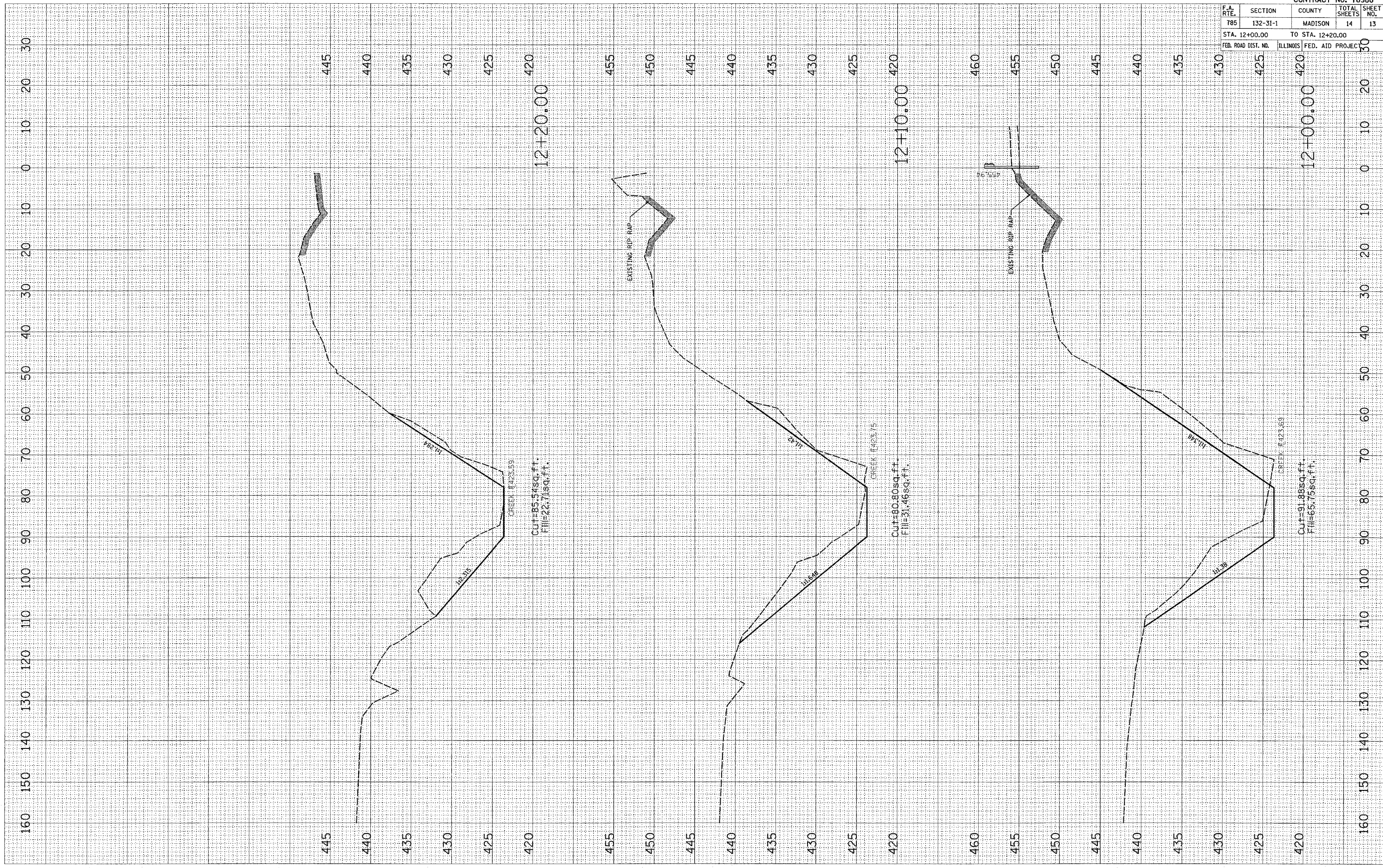
CONTRACT NO. 76988				
F.A. RTE.	SECTION	COUNTY	TOTAL SHEETS	SHEET NO.
785	132-31-1	MADISON	14	11
STA. 11+40.00 TO STA. 11+60.00				
FED. ROAD DIST. NO.		ILLINOIS	FED. AID PROJECT	



PLOT DATE = 5/18/2006  
 FILE NAME = c:\pcc\projects\6022886\plan\wash\6022886.dwg  
 PLOT SCALE = 1/8"=1'-0"  
 USER NAME = am.ghim

ORIGINAL SURVEY  
 SC' 100  
 BY  
 DATE

FINAL SURVEY  
 SURVEYED  
 NOTE BOOK  
 TEMPLATE  
 AREAS  
 BY  
 DATE

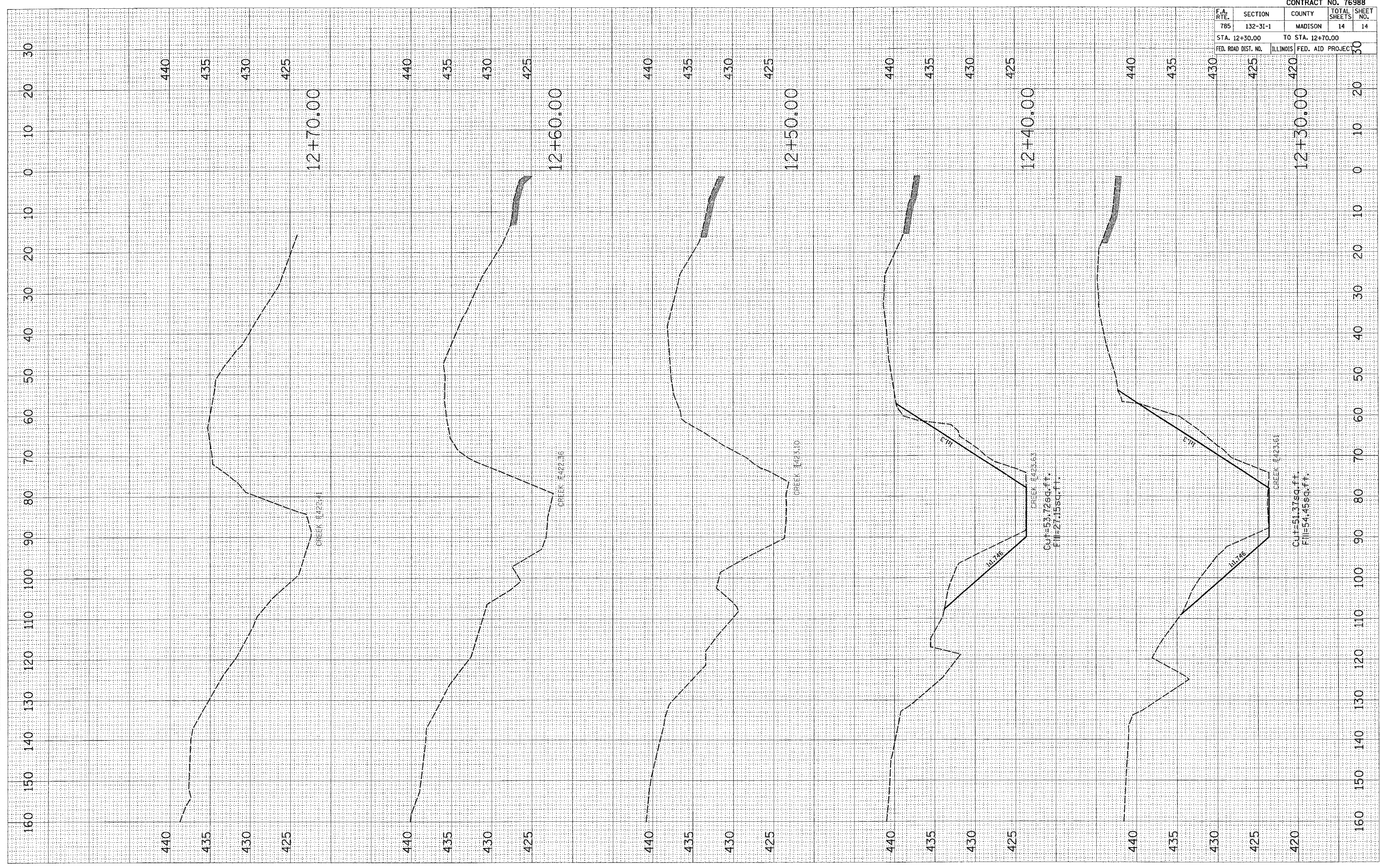


CONTRACT NO. 76988				
F.A. RTE.	SECTION	COUNTY	TOTAL SHEETS	SHEET NO.
785	132-31-1	MADISON	14	13
STA. 12+00.00		TO STA. 12+20.00		
FED. ROAD DIST. NO.	ILLINOIS	FED. AID PROJEC		

PLOT DATE = 5/19/2006  
 FILE NAME = G:\Projects\ed2286c\plan\wash2\2286c.dwg  
 PLOT SCALE = 10/3000 / IN.  
 USER NAME = am3hms

ORIGINAL SURVEY  
 SURVEY NO. \_\_\_\_\_  
 DATE \_\_\_\_\_  
 BY \_\_\_\_\_  
 SUPERVISOR \_\_\_\_\_  
 TEMPLATE \_\_\_\_\_  
 AREAS CHECKED \_\_\_\_\_  
 NO. \_\_\_\_\_

FINAL SURVEY  
 SURVEY NO. \_\_\_\_\_  
 DATE \_\_\_\_\_  
 BY \_\_\_\_\_  
 SUPERVISOR \_\_\_\_\_  
 TEMPLATE \_\_\_\_\_  
 AREAS CHECKED \_\_\_\_\_  
 NO. \_\_\_\_\_



CONTRACT NO. 76988				
F.A. RTE.	SECTION	COUNTY	TOTAL SHEETS	SHEET NO.
785	132-31-1	MADISON	14	14
STA. 12+30.00		TO STA. 12+70.00		
FED. ROAD DIST. NO.		ILLINOIS FED. AID PROJECT		