

F.A.U. RTE.	SECTION	COUNTY	TOTAL SHEETS	SHEET NO.
--	00-P4003-00-BT	WILL	57	1
FED. ROAD DIST. NO. 1		ILLINOIS	FED. AID PROJECT	

CONTRACT NO. 83532

STATE OF ILLINOIS
DEPARTMENT OF TRANSPORTATION
DIVISION OF HIGHWAYS

PLANS FOR PROPOSED FEDERAL AID HIGHWAY

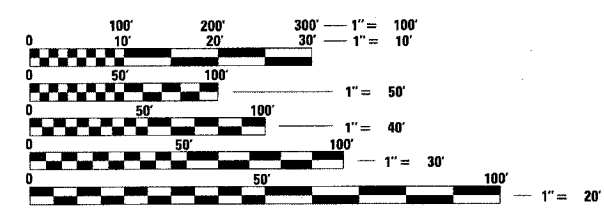
**DELLWOOD PARK WEST BIKE PATH
I & M CANAL TOW PATH TO EXISTING
STONE ROADWAY
"BIKE TRAIL CONSTRUCTION"
L.A. SECTION No. 00-P4003-00-BT
PROJECT No. TE-0001(565)
C-91-287-00**

**LOCKPORT TOWNSHIP PARK DISTRICT
WILL COUNTY**



TRAFFIC DATA
ADT (YEAR) = NA
SPEED LIMIT = NA

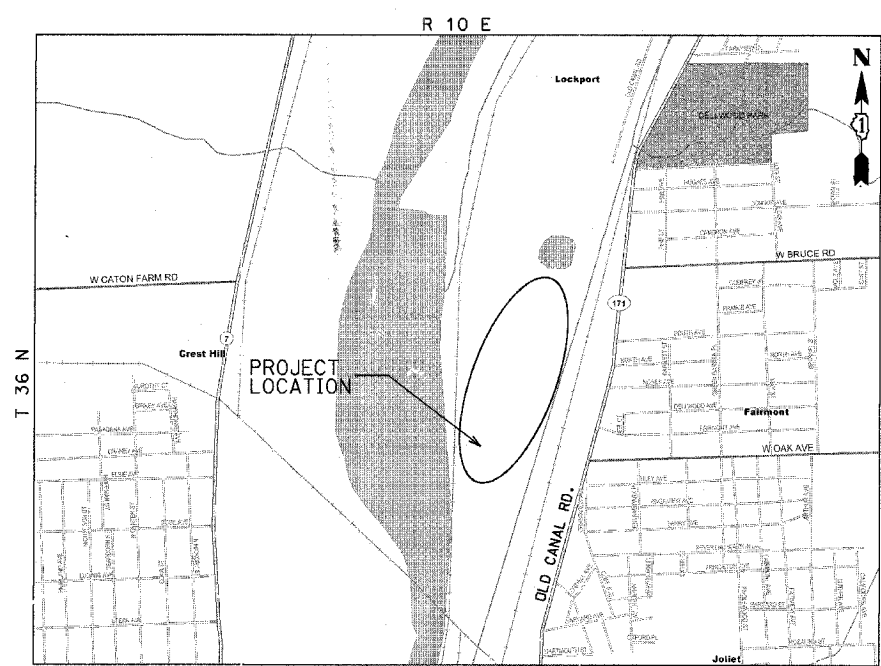
DESCRIPTION	INDEX OF SHEETS	SHEET NO.
TITLE SHEET		1
SUMMARY OF QUANTITIES, GENERAL NOTES & IDOT STANDARDS		2
EARTHWORK SCHEDULE		3
TYPICAL SECTIONS		4
ALIGNMENT, TIES AND BENCHMARKS		5
OVERALL SITE PLAN		6
BIKE PATH PLAN AND PROFILE		7-15
STRUCTURAL GENERAL NOTES		16
PEDESTRIAN BRIDGE PLAN ELEVATION		17
PEDESTRIAN BRIDGE SECTIONS AND DETAILS		18
CONSTRUCTION DETAILS		19
DISTRICT ONE TYPICAL PAVEMENT MARKINGS		20
TYPICAL CONTROL AND PROTECTION FOR SIDE ROADS, INTERSECTIONS, AND DRIVEWAYS AND BENCHING DETAIL FOR EMBANKMENT WIDENING		21
CROSS SECTIONS		22-57



FULL SIZE PLANS HAVE BEEN PREPARED USING STANDARD ENGINEERING SCALES. REDUCED SIZED PLANS WILL NOT CONFORM TO STANDARD SCALES. IN MAKING MEASUREMENTS ON REDUCED PLANS, THE ABOVE SCALES MAY BE USED.

J.U.L.I.E.
JOINT UTILITY LOCATION INFORMATION FOR EXCAVATION
1-800-892-0123

CONTRACT NO. 83532



LOCATION MAP
N.T.S.

GROSS LENGTH OF PROJECT = 8300 FEET (1.6 MI)
NET LENGTH OF PROJECT = 8300 FEET (1.6 MI)

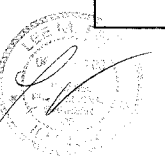
STATE OF ILLINOIS
DEPARTMENT OF TRANSPORTATION
DIVISION OF HIGHWAYS

APPROVED Jan. 9th 2006
Sue M. ...
PARK DISTRICT

APPROVED FEBRUARY 24 2006
CHT
LOCAL ROADS AND STREETS

APPROVED Feb. 24 2006
Diane M. O'Keefe/CJL
DEPUTY DIRECTOR OF HIGHWAYS,
REGION ENGINEER

SEAL



IDOT FEDERAL-AID DESIGN ENGINEER: KEVIN STALLWORTH (847) 705-4169

CB CHRISTOPHER B. BURKE ENGINEERING LTD.
9575 West Higgins Road, Suite 600
Rosemont, Illinois 60018 (847) 823-0500