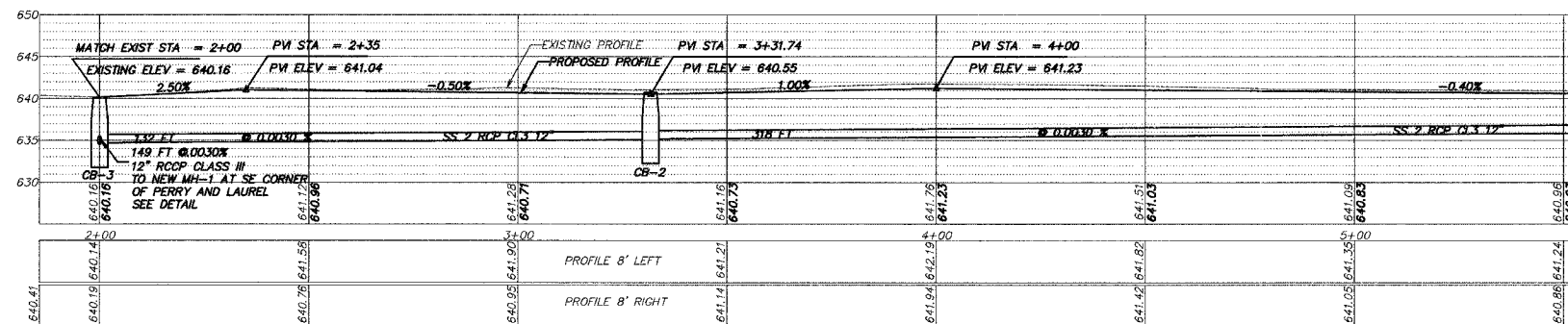
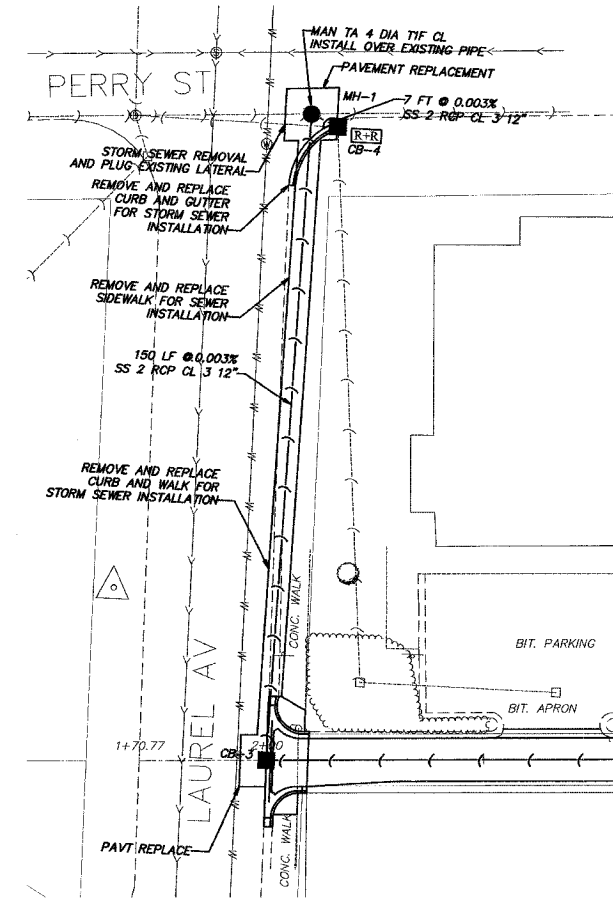
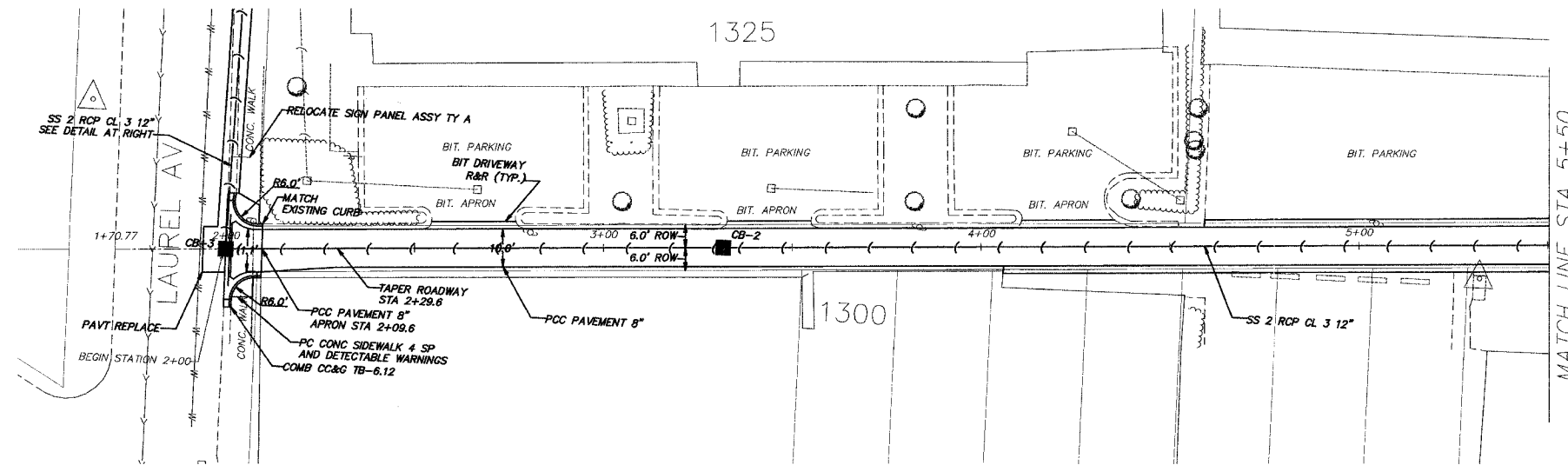
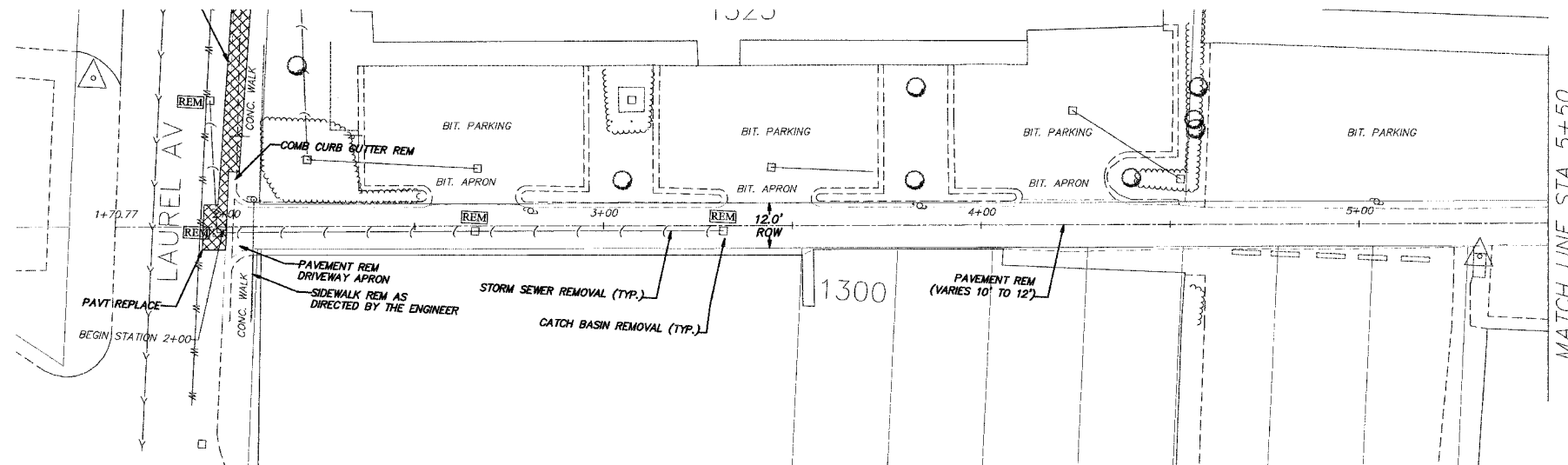


F.A. R.F.E.	SECTION	COUNTY	TOTAL SHEETS	SHEET NO.
05-00194-00-RP	COOK	COOK	58	7
STA.	TO STA.			
FED. ROAD DIST. NO.	ILLINOIS	FED. AID PROJECT		



PROPOSED STRUCTURE DATA:

MH-1 MH TY A 4 FT DIA ROUND FRAME CLOSED LID STA-2+11 148'-L (SE CORNER OF PERRY/LAUREL) RIM-638.06 INV.-635.89 (SE) INV.-634.14 (S) INV.-628.56 (E-W) INSTALL MH OVER EXISTING 30" PIPE	CB-4 CB TY C 2 FT DIA ROUND FRAME OPEN LID STA-2+17 145'-L (SE CORNER OF PERRY/LAUREL) RIM-638.91 INV.-636.06 (S) EXISTING PIPE INV.-635.91 (NW)	CB-3 CB TY A 4 FT DIA ROUND FRAME OPEN LID STA-2+00 RIM-640.16 INV.-634.68 (E) INV.-634.58 (N)	CB-2 CB TY C 2 FT DIA ROUND FRAME OPEN LID STA-3+32 RIM-640.73 INV.-635.18 (E) INV.-635.08 (W)
--	--	---	---

REVISIONS	
NAME	DATE

ILLINOIS DEPARTMENT OF TRANSPORTATION
 CITY OF DES PLAINES - ALLEY IMPROVEMENTS
 PERRY - JEFFERSON ALLEY
 LAUREL TO GRACELAND

PLAN AND PROFILE
 STA 2+00 TO 5+50

SCALE: VERT. 1" = 5'
 HORIZ. 1" = 20'

DATE: 2-17-06 DRAWN BY: BLS
 CHECKED BY: AJD

PLOT DATE = 2/13/2006 3:58:07 PM
 PLOT FILE = I:\PROJECTS\2006\052006 23 ALLEY.DWG
 USER NAME = JDOUGLAS