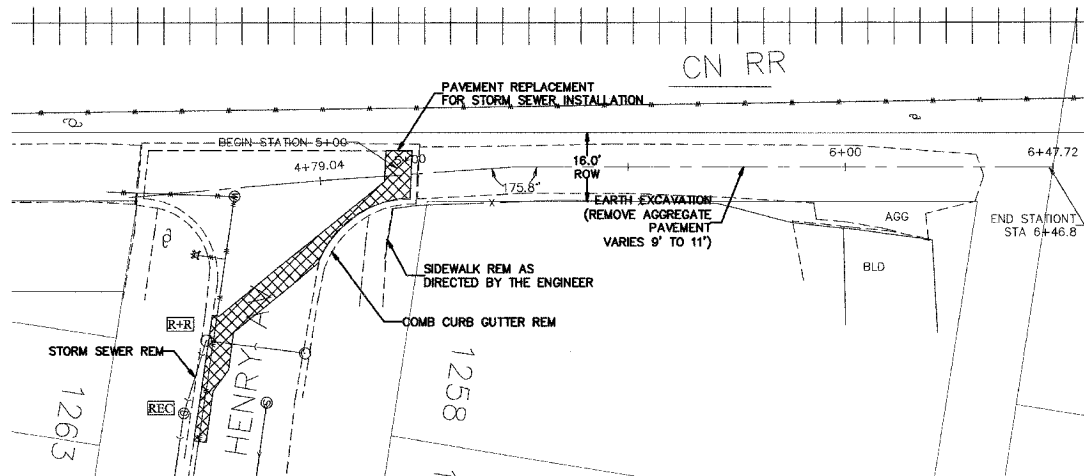
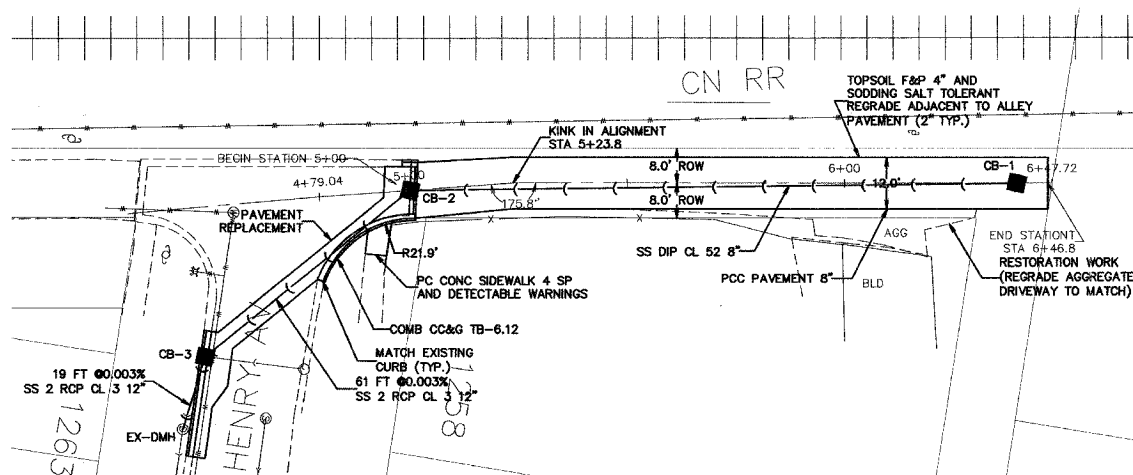


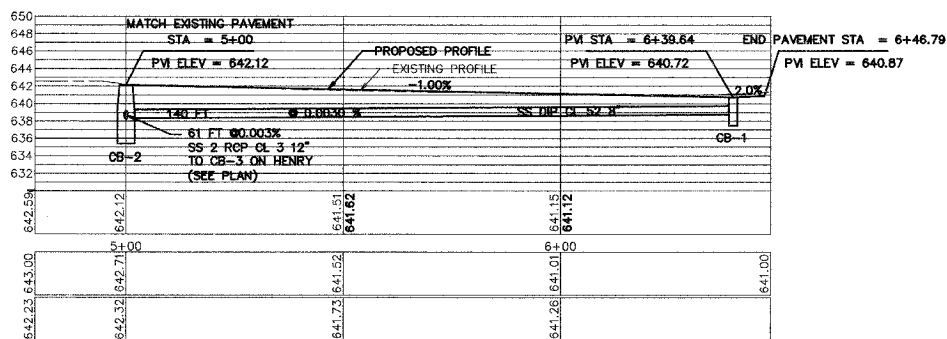
F.A. RT.	SECTION	COUNTY	TOTAL SHEETS	SHEET NO.
05-00194-00-RP		COOK	55	11
STA. _____		TO STA. _____		
FED. ROAD DIST. NO. _____		ILLINOIS FED. AID PROJECT _____		



EXISTING



PROPOSED



PROPOSED STRUCTURE DATA:

EX-MH ROUND FRAME, CLOSED LID STA-4+43 50'-R RIM-642.10 INV.-637.89 (W) INV.-637.79 (E) TIE NEW PIPE INTO MH RECONSTRUCT MANHOLE	CB-3 CB TY A 4 FT DIA CURB FRAME, OPEN LID STA-4+50 34'-R RIM-641.80 INV.-639.00 (N) INV.-638.04 (NW) INV.-637.94 (SE) REMOVE AND REPLACE CATCH BASIN TIE IN EXISTING PIPE FROM NORTH	CB-2 CB TY A 4 FT DIA ROUND FRAME, OPEN LID STA-5+00 0'-R RIM-642.12 INV.-638.32 (N) INV.-638.22 (SE)	CB-1 CB TY C 2 FT DIA ROUND FRAME, OPEN LID STA-6+40 RIM-640.72 INV.-638.74 (S)
---	---	--	---

REVISIONS		ILLINOIS DEPARTMENT OF TRANSPORTATION CITY OF DES PLAINES - ALLEY IMPROVEMENTS CN RR - CENTER ALLEY HENRY TO END  PLAN AND PROFILE  STA 5+00 TO 6+46.8
NAME	DATE	
		SCALE: VERT. 1" = 5' HORIZ. 1" = 20' DATE: 2-17-06
DRAWN BY: BLS		CHECKED BY: A/JD

PLOT DATE = 2/19/06 10:58:57 AM  
 PLOT NAME = C:\ENR\PROJECTS\2005\DES-ALLEY\WORK\2-ALLEY.DWG  
 PLOT SCALE = 1" = 20'  
 USER NAME = JUBERTLES