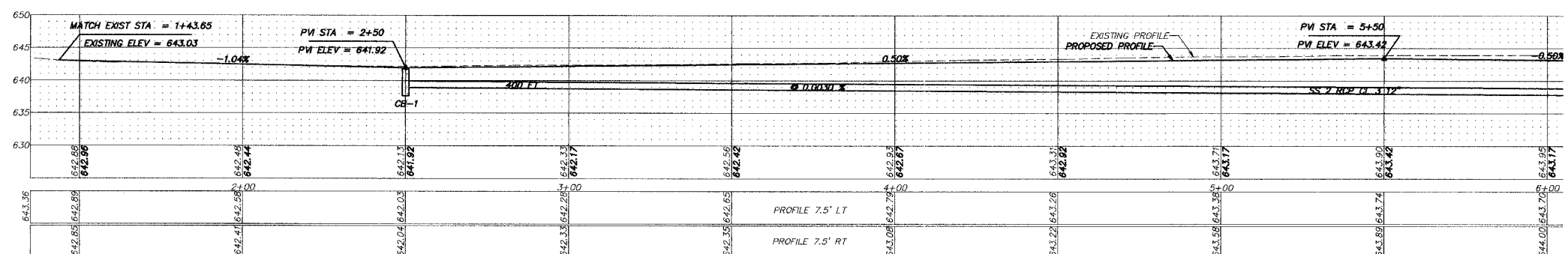
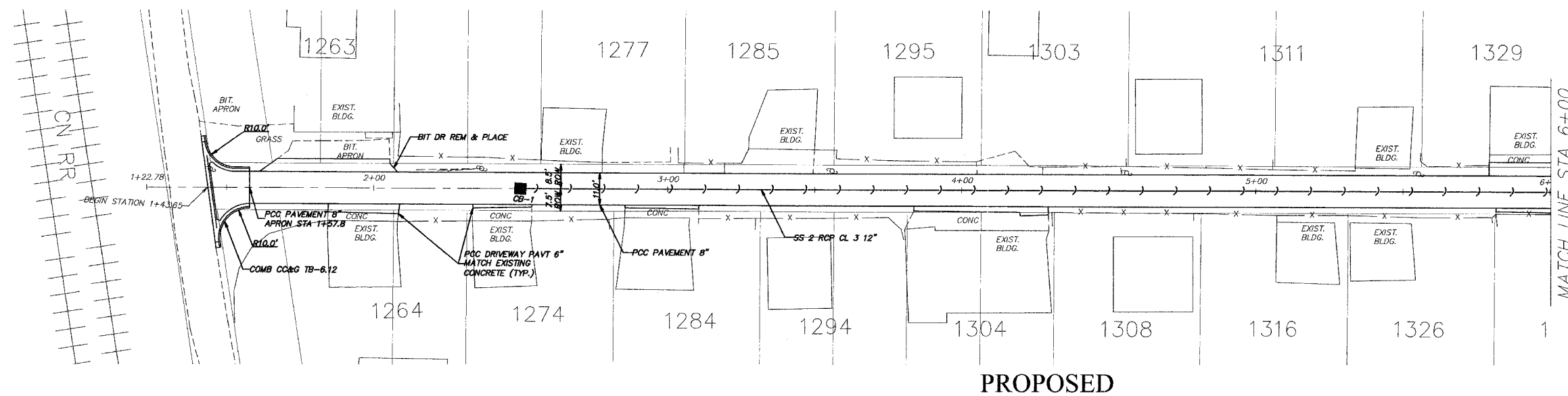
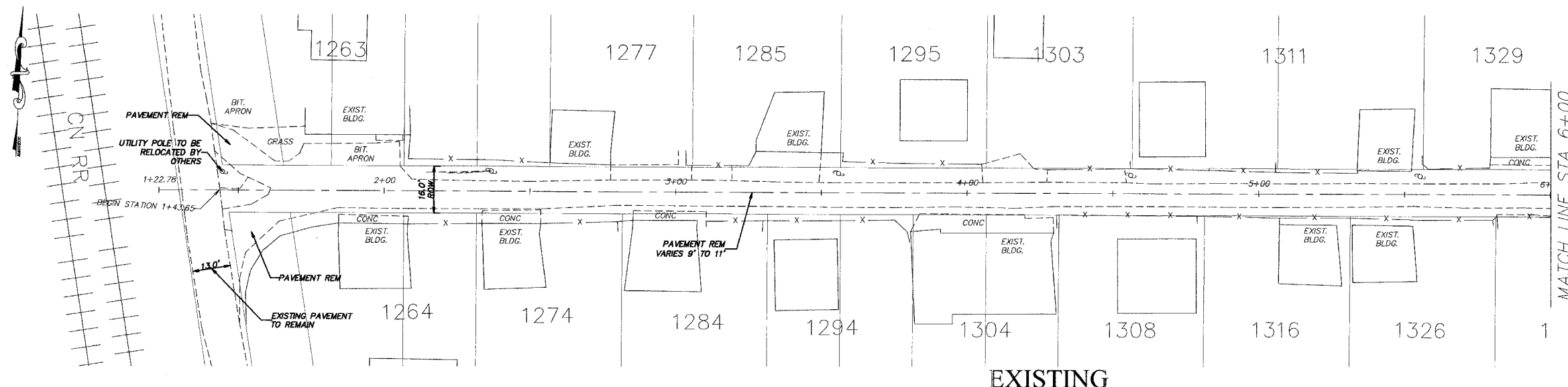


F.A. RT#	SECTION	COUNTY	TOTAL SHEETS	SHEET NO.
05-00194-00-RR		COOK	38	13
STA.	TO STA.			
FED. ROAD DIST. NO.	ILLINOIS	FED. AID PROJECT		



PROPOSED STRUCTURE DATA:
 CB-1 CB TY C 2 FT DIA
 ROUND FRAME AND OPEN LID
 STA-2+50
 FIM-641.92
 INV.-638.92 (E)

REVISIONS	
NAME	DATE

ILLINOIS DEPARTMENT OF TRANSPORTATION
 CITY OF DES PLAINES - ALLEY IMPROVEMENTS
 HENRY - CAMPBELL ALLEY
 CN RR TO CENTER
 PLAN AND PROFILE
 STA 1+43.65 TO 6+00
 SCALE: VLRT. 1" = 5'
 HORIZ. 1" = 20'
 DATE 2-17-06
 DRAWN BY BLS
 CHECKED BY AJD

PLOT DATE = 2/13/2006 2:18:57 PM
 PLOT SCALE = 1" = 5' (V)
 USER NAME = JIMDOLLE