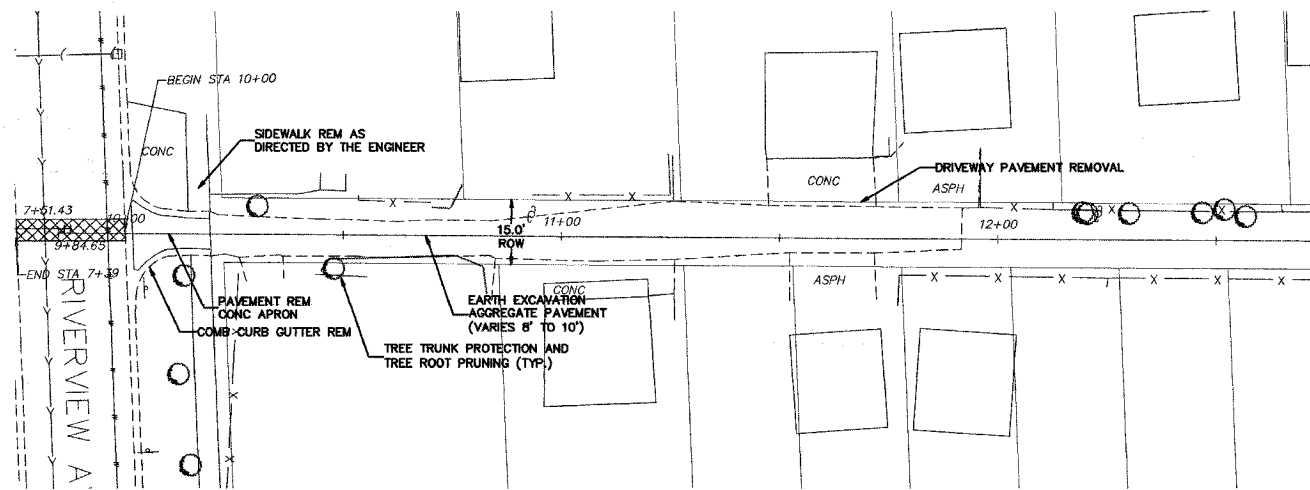
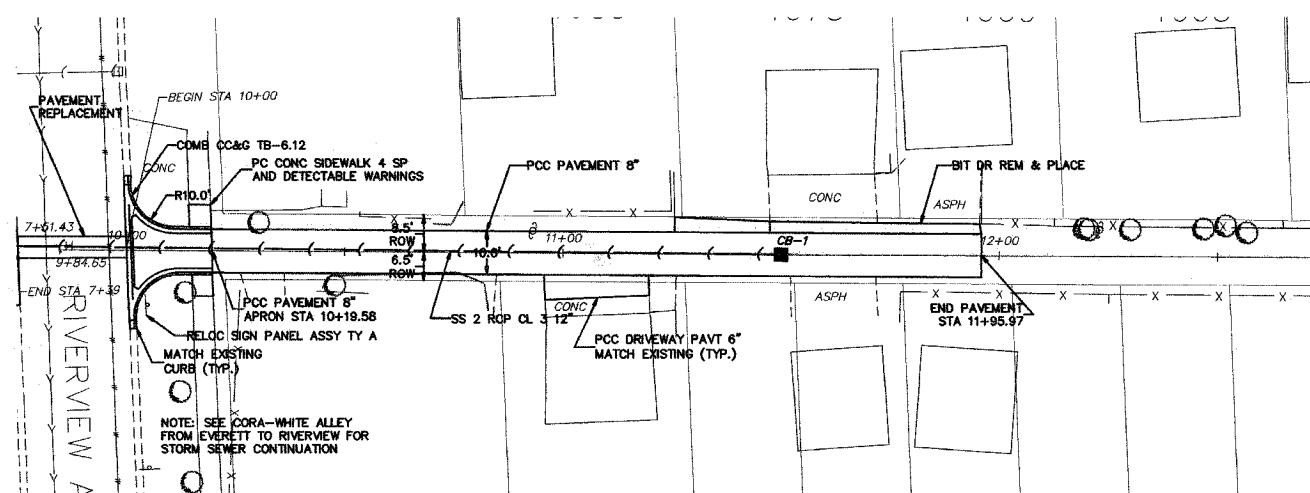


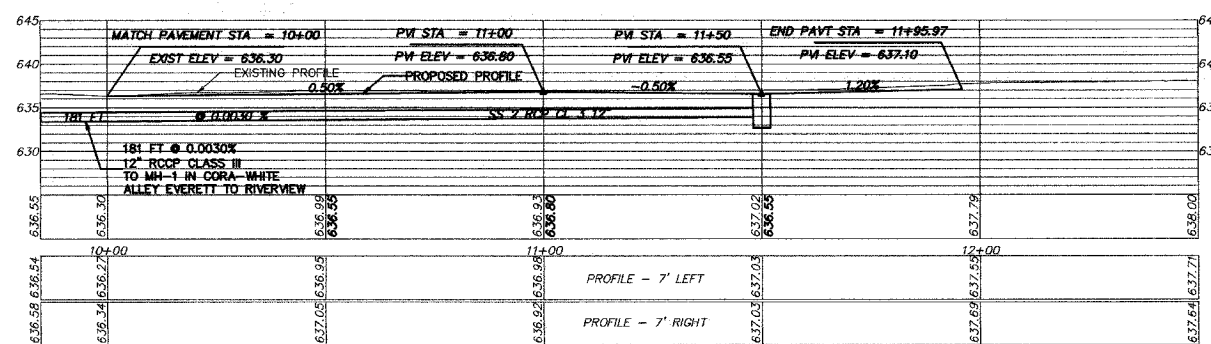
F.A. RT.	SECTION	COUNTY	TOTAL SHEETS	SHEET NO.
	05-00194-00-RP	COOK	50	18
STA. TO STA.		FED. ROAD DIST. NO. ILLINOIS FED. AID PROJECT		



EXISTING



PROPOSED



PROPOSED STRUCTURE DATA:
 MH-1 MH TY 4 FT DIA
 ROUND FRAME CLOSED LID
 STA-7+33 0'-R
 (SEE EVERETT TO RIVERVIEW SEGMENT)
 RIM-636.99
 INV.-633.41 (N)
 INV.-632.19 (W)
 INV.-632.00 (S)

CB-1 CB TY C 2 FT DIA
 ROUND FRAME OPEN LID
 STA-11+50
 RIM-636.53
 INV.-633.95 (S)

REVISIONS	DATE

ILLINOIS DEPARTMENT OF TRANSPORTATION
 CITY OF DES PLAINES - ALLEY IMPROVEMENTS
 CORA - WHITE ALLEY
 RIVERVIEW TO END

PLAN AND PROFILE

STA 10+00 TO 11+95.97

SCALE: VERT. 1" = 5'
 HORIZ. 1" = 20'
 DATE 2-17-06 DRAWN BY BLS
 CHECKED BY AJD