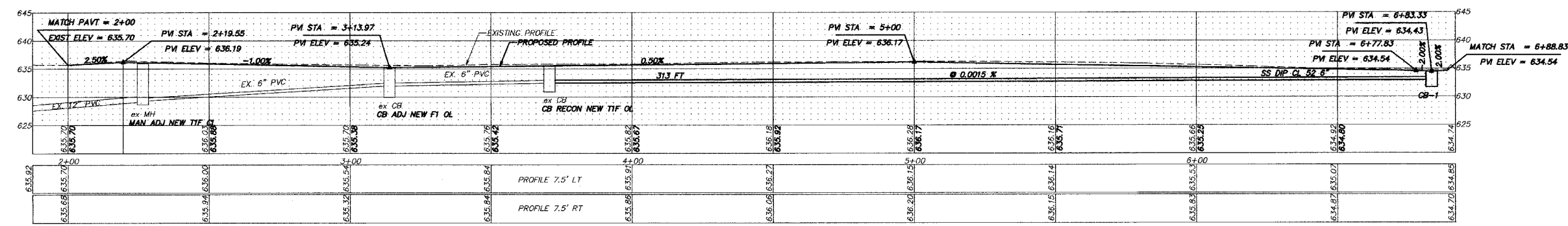
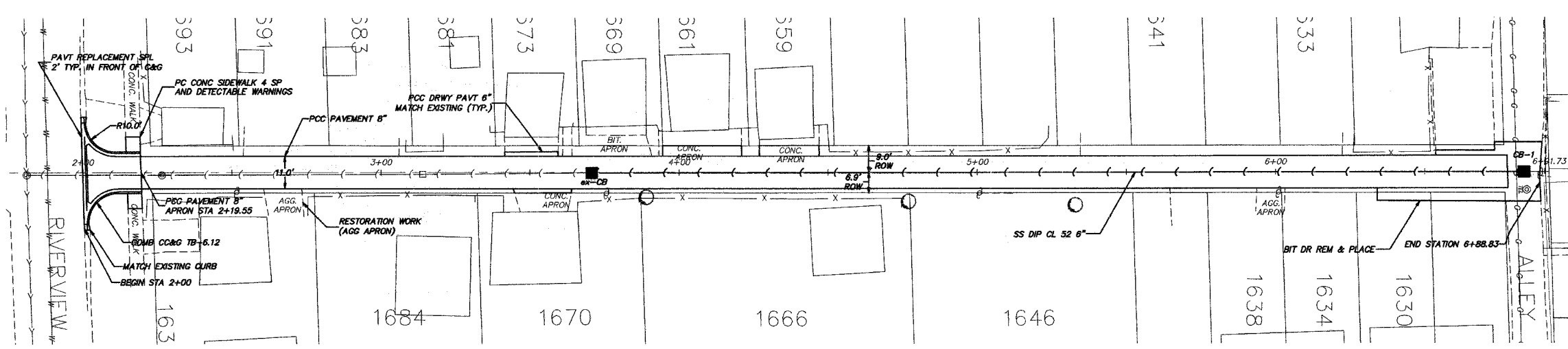
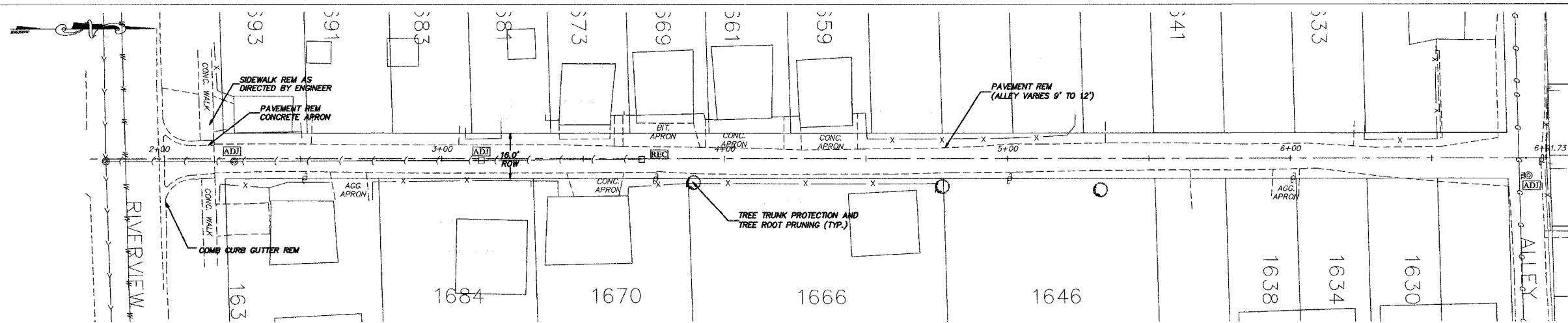


F.A. R.T.E.	SECTION	COUNTY	TOTAL SHEETS	SHEET NO.
	05-00194-00-RP	COOK	58	17
STA.	TO STA.			
FED. ROAD DIST. NO. ILLINOIS FED. AID PROJECT				



**PROPOSED STRUCTURE DATA:**  
 ex-CB CB TY A 4 FT DIA  
 ROUND FRAME OPEN LID  
 STA-3+71 0-R  
 RM-635.53  
 INV.-632.46 (N)  
 INV.-632.46 (S)  
 RECONSTRUCT AND TIE IN NEW PIPE

CB-1 CB TY C 2 FT DIA  
 ROUND FRAME OPEN LID  
 STA-6+83  
 RM-634.43  
 INV.-632.93 PIPE

REVISIONS	
NAME	DATE

ILLINOIS DEPARTMENT OF TRANSPORTATION  
 CITY OF DES PLAINES - ALLEY IMPROVEMENTS  
 WHITE - LINDEN ALLEY  
 RIVERVIEW TO ALLEY  
 PLAN AND PROFILE  
 STA 2+00 TO 6+88.83  
 SCALE: VERT. 1" = 5'  
 HORIZ. 1" = 20'  
 DATE 2-17-06 DRAWN BY BLS  
 CHECKED BY AJD

PLOT DATE = 2/13/2006 3:08:57 PM  
 FILE NAME = N:\ENGINEERING\LAND PROJECTS 2006\050206-02 A LINDEN\050206-02 ALLEY.DWG  
 USER NAME = JDOUGLES