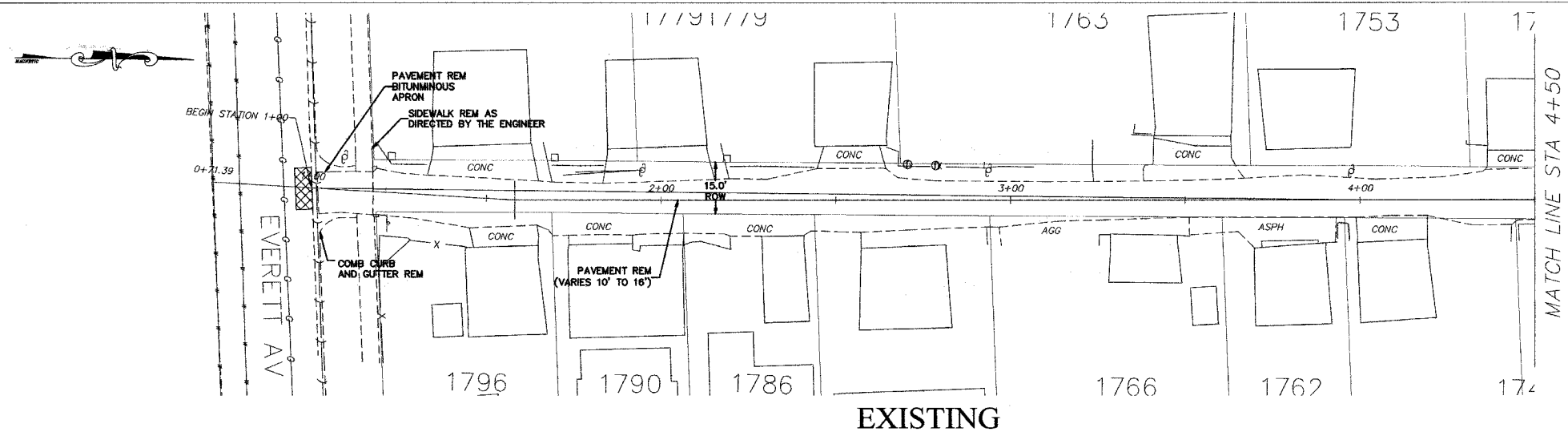
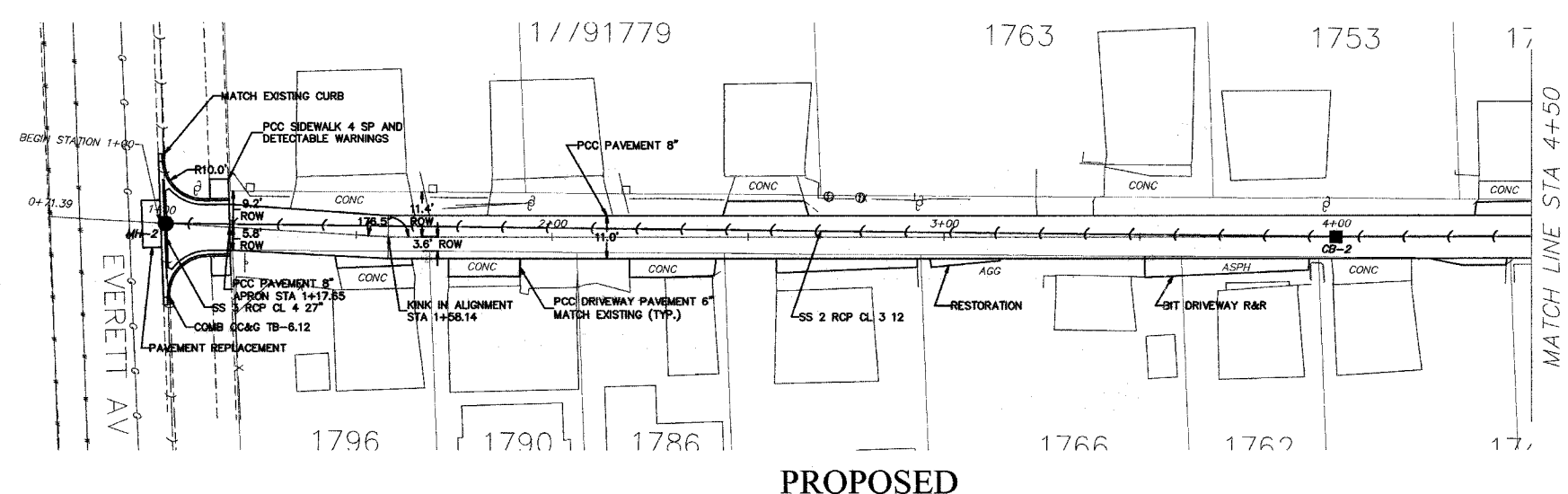


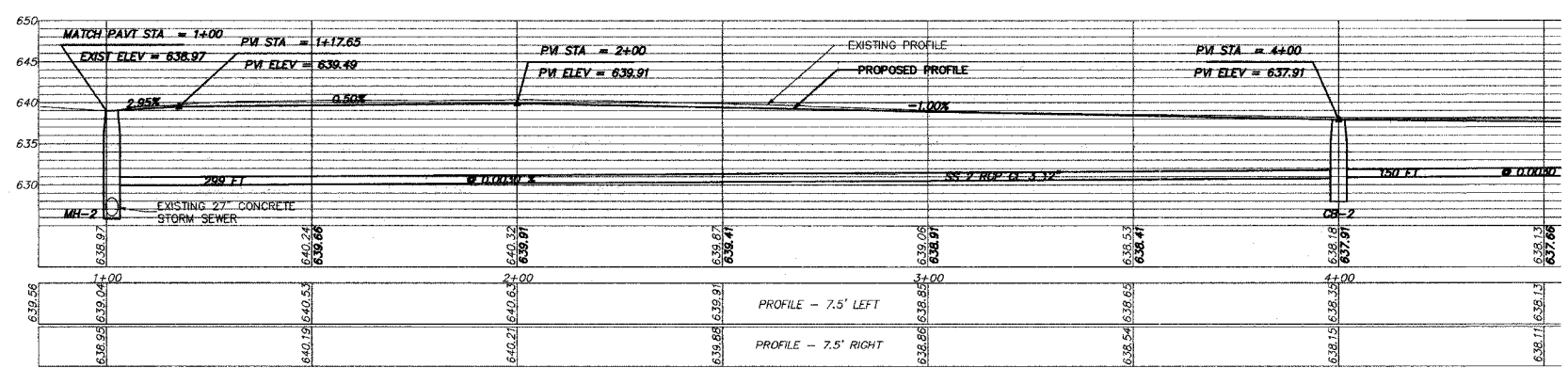
F.A. RITE	SECTION	COUNTY	TOTAL SHEETS	SHEET NO.
	05-00194-00-RP	COOK	58	20
STA.		TO STA.		
FED. ROAD DIST. NO. -		ILLINOIS FED. AID PROJECT		



EXISTING



PROPOSED



**PROPOSED STRUCTURE DATA:**  
 MH-2 MH TY A 4 FT DIA  
 ROUND FRAME CLOSED LID  
 STA-1+01  
 RIM-638.01  
 INV.-629.91 (N)  
 INV.-626.18 (E-W)  
 INSTALL MH OVER EXISTING  
 27" CONCRETE SEWER PIPE

CB-2 CB TY C 2 FT DIA  
 ROUND FRAME OPEN LID  
 STA-4+00  
 RIM-637.91  
 INV.-630.90 (N)  
 INV.-630.80 (S)

REVISIONS	
NAME	DATE

ILLINOIS DEPARTMENT OF TRANSPORTATION  
 CITY OF DES PLAINES - ALLEY IMPROVEMENTS  
 CORA - WHITE ALLEY  
 EVERETT TO RIVERVIEW  
 PLAN AND PROFILE  
 STA 1+00 TO 4+50  
 SCALE: VERT. 1" = 5'  
 HORIZ. 1" = 20'  
 DATE 2-17-06  
 DRAWN BY BLS  
 CHECKED BY AJD

PLOT DATE = 2/13/2006 9:46:47 PM  
 FILE NAME = V:\ENGINEERING\LAND PROJECTS 2005\0503205-91-97 ALLEY.DWG-0503205-91-97 ALLEY.DWG  
 PLOT SCALE = 1" = 20'  
 USER NAME = JCOULLES