

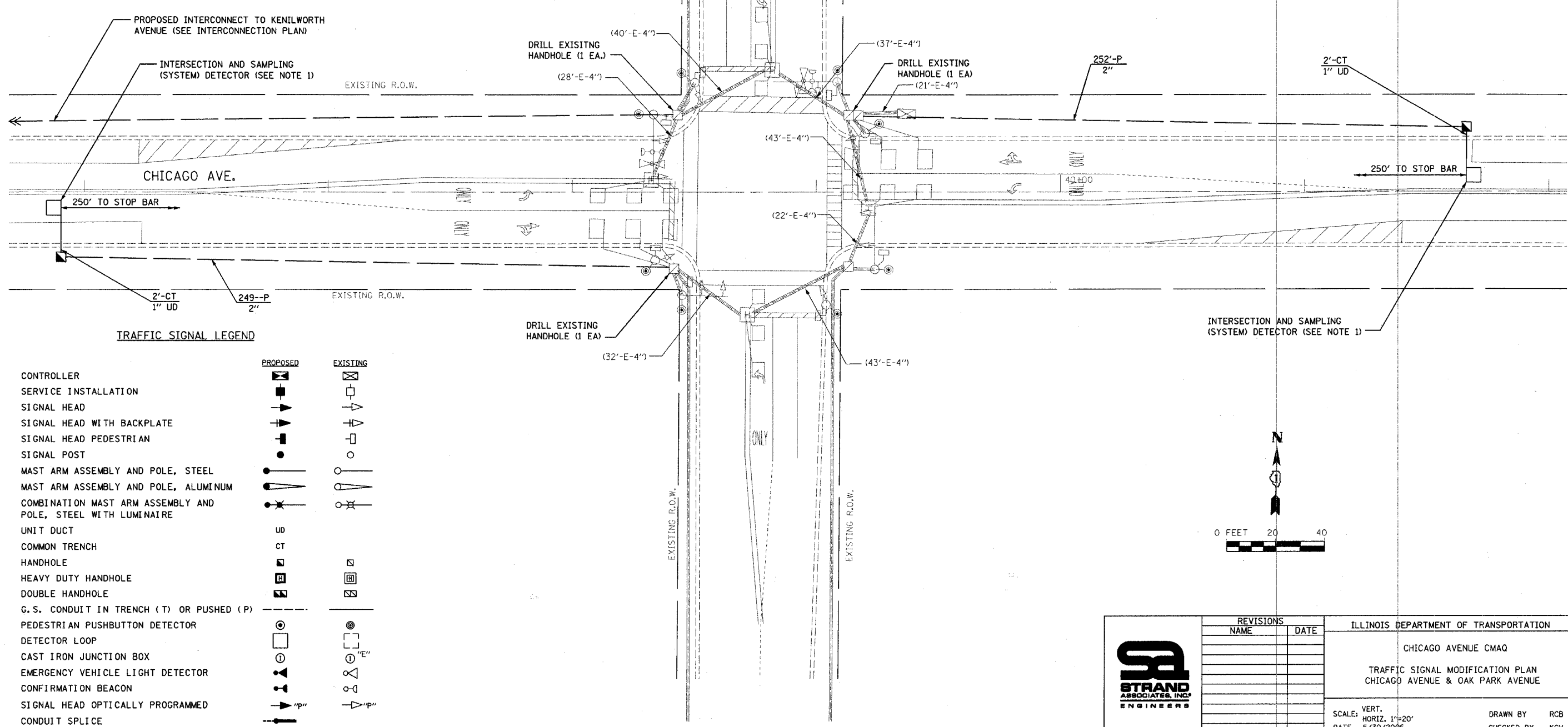
F.A. RTE.	SECTION	COUNTY	TOTAL SHEETS	SHEET NO.
1398	06-00241-00-TL	COOK	23	11
STA.	TO STA.			
FED. ROAD DIST. NO.	ILLINOIS	FED. AID PROJECT		

~~83860~~ 83868.0

RESTORATION OF WORK AREA
 RESTORATION OF THE TRAFFIC SIGNAL WORK AREA SHALL BE INCIDENTAL TO THE RELATED PAY ITEM SUCH AS FOUNDATION, CONDUIT, HANDHOLE, TRENCH AND BACKFILL, ETC., AND NO EXTRA COMPENSATION SHALL BE ALLOWED. ALL ROADWAY SURFACES SUCH AS SHOULDERS, MEDIANS, SIDEWALKS, PAVEMENT, ETC., SHALL BE REPLACED IN KIND. ALL DAMAGE TO MOWED LAWNS SHALL BE REPLACED WITH AN APPROVED SOD, IN ACCORDANCE WITH STANDARD SPECIFICATION.

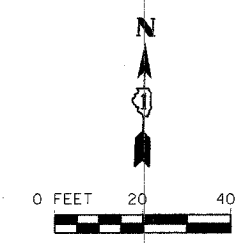
THE TRAFFIC SIGNAL CONTROL EQUIPMENT FOR THIS PROJECT SHALL BE "ECONOLITE" TO MATCH THE EXISTING ADJACENT SYSTEM

1. INTERSECTION AND SAMPLING (SYSTEM) DETECTOR LOOPS SHALL BE INSTALLED ACCORDING TO DISTRICT ONE STANDARDS.
2. EXISTING CONDUIT AND CABLE SHALL REMAIN IN PLACE.
3. THE CONTRACTOR SHALL BE RESPONSIBLE FOR VERIFYING EXISTING CONDITIONS. NO COMPENSATION WILL BE MADE FOR AREAS WHERE CONDUIT IS TRENCHED INSTEAD OF PUSHED. ALL CONDUIT SHALL BE PAID FOR AT THE CONTRACT UNIT PRICE FOR CONDUIT, PUSHED UNLESS OTHERWISE NOTED ON THE PLANS OR AS DIRECTED BY THE ENGINEER. ALL RESTORATION REQUIRED ABOVE THE BORED OR TRENCHED AREA SHALL BE INCIDENTAL TO THE CONDUIT REGARDLESS OF THE INSTALLATION METHOD. BID PRICES SHALL REFLECT THE CONTRACTOR'S DESIRED METHOD OF INSTALLATION.



TRAFFIC SIGNAL LEGEND

	PROPOSED	EXISTING
CONTROLLER	[Symbol]	[Symbol]
SERVICE INSTALLATION	[Symbol]	[Symbol]
SIGNAL HEAD	[Symbol]	[Symbol]
SIGNAL HEAD WITH BACKPLATE	[Symbol]	[Symbol]
SIGNAL HEAD PEDESTRIAN	[Symbol]	[Symbol]
SIGNAL POST	[Symbol]	[Symbol]
MAST ARM ASSEMBLY AND POLE, STEEL	[Symbol]	[Symbol]
MAST ARM ASSEMBLY AND POLE, ALUMINUM	[Symbol]	[Symbol]
COMBINATION MAST ARM ASSEMBLY AND POLE, STEEL WITH LUMINAIRE	[Symbol]	[Symbol]
UNIT DUCT	US	[Symbol]
COMMON TRENCH	CT	[Symbol]
HANDHOLE	[Symbol]	[Symbol]
HEAVY DUTY HANDHOLE	[Symbol]	[Symbol]
DOUBLE HANDHOLE	[Symbol]	[Symbol]
G.S. CONDUIT IN TRENCH (T) OR PUSHED (P)	T/P	[Symbol]
PEDESTRIAN PUSHBUTTON DETECTOR	[Symbol]	[Symbol]
DETECTOR LOOP	[Symbol]	[Symbol]
CAST IRON JUNCTION BOX	[Symbol]	[Symbol]
EMERGENCY VEHICLE LIGHT DETECTOR	[Symbol]	[Symbol]
CONFIRMATION BEACON	[Symbol]	[Symbol]
SIGNAL HEAD OPTICALLY PROGRAMMED	[Symbol]	[Symbol]
CONDUIT SPLICE	[Symbol]	[Symbol]



	REVISIONS		ILLINOIS DEPARTMENT OF TRANSPORTATION CHICAGO AVENUE CMAQ TRAFFIC SIGNAL MODIFICATION PLAN CHICAGO AVENUE & OAK PARK AVENUE
	NAME	DATE	
SCALE: VERT. 1"=20' HORIZ. 1"=20' DATE 5/30/2006		DRAWN BY RCB CHECKED BY KCV	

TRAFFIC SIGNAL PLAN

TIME: 8:23:42 PM

DATE: 5/30/2006

FILENAME: s:\05\751-400\751-400\mores\str\modifications\oak park avenue (proposed).dgn