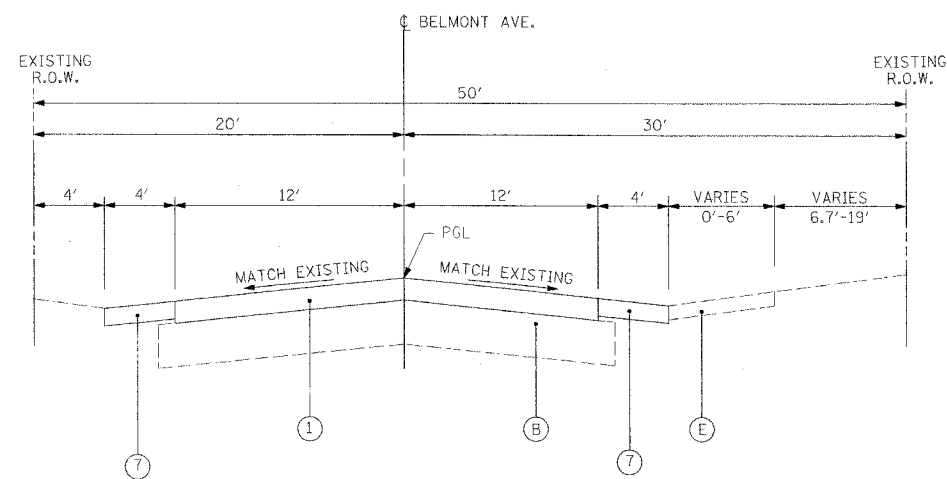
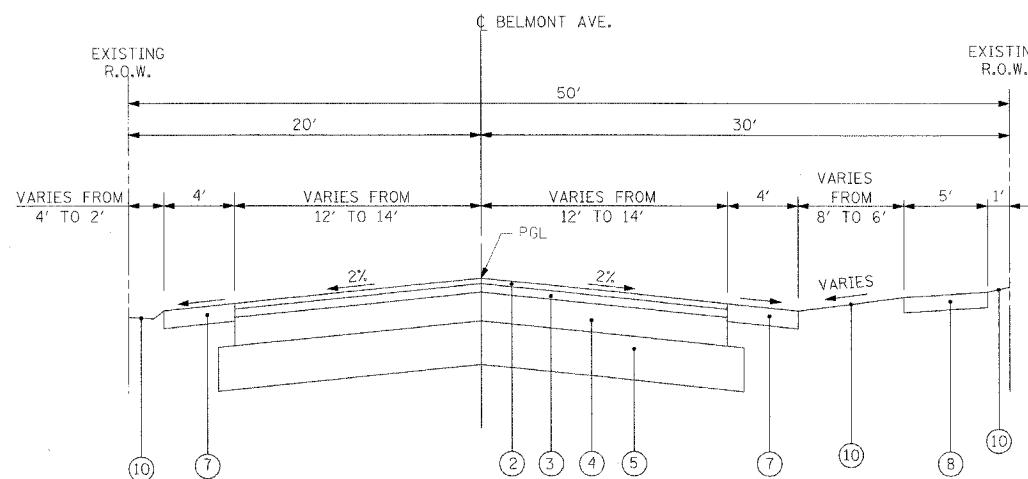


F.A.S. RTE.	SECTION	COUNTY	TOTAL SHEETS	SHEET NO.
1373	00-00058-00-RS	COOK	113	8
STA. 104+90.00 TO STA. 145+50.00				
FED. ROAD DIST. NO. ILLINOIS FED. AID PROJECT				
CONTRACT No: 83861				



PROPOSED TYPICAL SECTION  
BELMONT AVENUE  
STA. 104+90.00 TO 110+00.00



PROPOSED TYPICAL SECTION  
BELMONT AVENUE  
STA. 110+00.00 TO 110+60.00

**EXISTING LEGEND**

- (A) BITUMINOUS PAVEMENT, 6" (VARIES 1 1/2" TO 9")
- (B) CRUSHED STONE SUBBASE, 13" (VARIES 10" TO 15")
- (C) COMBINATION CONCRETE CURB AND GUTTER TYPE B-6.12
- (D) SIDEWALK (NOT PRESENT AT ALL LOCATIONS)
- (E) AGGREGATE SHOULDER
- (F) PORTLAND CEMENT CONCRETE BASE, 6 1/2"
- (G) UNSUITABLE MATERIALS \*

**PROPOSED LEGEND**

- (1) BITUMINOUS CONCRETE SURFACE COURSE, SUPERPAVE, MIX "D", N70 (3")  
BITUMINOUS CONCRETE PAVEMENT (FULL DEPTH), SUPERPAVE, 4 1/4"
- (2) BITUMINOUS CONCRETE SURFACE COURSE, SUPERPAVE, MIX "D", N70 (2")
- (3) BITUMINOUS CONCRETE BINDER COURSE, SUPERPAVE, IL-19.0, N70 (2 1/4")
- (4) BITUMINOUS BASE COURSE, SUPERPAVE, (6 1/2")
- (5) AGGREGATE SUBGRADE, 12"
- (6) COMBINATION CONCRETE CURB AND GUTTER, TYPE B-6.12
- (7) AGGREGATE SHOULDERS, TYPE A 6"
- (8) PORTLAND CEMENT CONCRETE SIDEWALK 5"
- (9A) POROUS GRANULAR EMBANKMENT, SUBGRADE \*
- (9B) GRANULAR EMBANKMENT, SPECIAL \*\*  
WITH GEOTECHNICAL FABRIC FOR  
GROUND STABILIZATION
- (10) TOPSOIL FURNISH AND PLACE, 4"  
SODDING, SALT TOLERANT

\* LOCATIONS OF POROUS GRANULAR EMBANKMENT, SUBGRADE  
- STA. 110+60 TO STA. 112+50, 6"  
- STA. 142+00 TO STA. 145+50, 6"

\*\* LOCATIONS OF GRANULAR EMBANKMENT, SPECIAL  
- STA. 129+50 TO STA. 136+50, 12"

**BITUMINOUS MIX REQUIREMENTS**

PAY ITEM	AC TYPE	VOIDS	MAX RAP %
<b>BITUMINOUS CONCRETE PAVEMENT (FULL DEPTH), SUPERPAVE, 4 1/4"</b>			
BITUMINOUS CONCRETE SURFACE COURSE, SUPERPAVE, MIX "D", N70, 2"	PG 64-22	4% @ 70 GYR.	10%
BITUMINOUS CONCRETE BINDER COURSE, SUPERPAVE, IL-19, N70, 2 1/4"	PG 64-22	4% @ 70 GYR.	15%
<b>BITUMINOUS BASE COURSE, SUPERPAVE, 6 1/2"</b>	PG 58-22	2% @ 50 GYR.	50%
<b>BITUMINOUS CONCRETE SURFACE COURSE, SUPERPAVE, MIX "D", N70, 3"</b>	PG 64-22	4% @ 70 GYR.	10%
<b>TEMPORARY PAVEMENT</b>			
BITUMINOUS BASE COURSE, SUPERPAVE, 8.5"	PG 58-22	2% @ 50 GYR.	50%

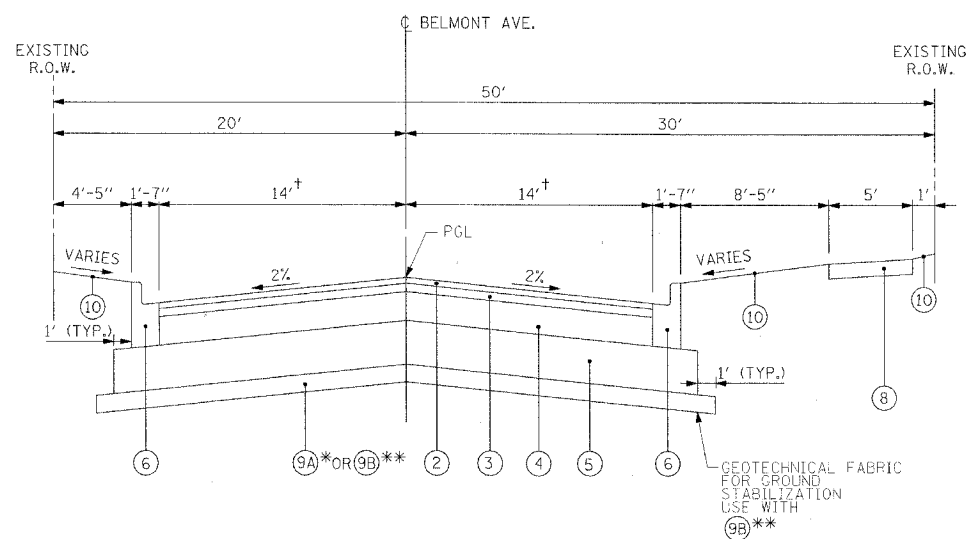
THE UNIT WEIGHT USED TO CALCULATE ALL BITUMINOUS SURFACE MIX QUANTITIES IS 112 LBS/SQ YD/IN

REVISIONS	
NAME	DATE

ILLINOIS DEPARTMENT OF TRANSPORTATION  
**PROPOSED TYPICAL SECTIONS**

SCALE: VERT. N.T.S.  
HORIZ. N.T.S.  
DATE: 4/6/06

DRAWN BY: MJK  
CHECKED BY: BDC



PROPOSED TYPICAL SECTION  
BELMONT AVENUE  
STA. 110+60.00 TO 127+87  
(RAILROAD CROSSING STA 127+87 TO 128+57 )  
STA. 128+57 TO 145+29.33

† STA. 145+29.83 TO 145+50  
(PAVEMENT WIDTH TRANSITION  
TO MATCH EXISTING)