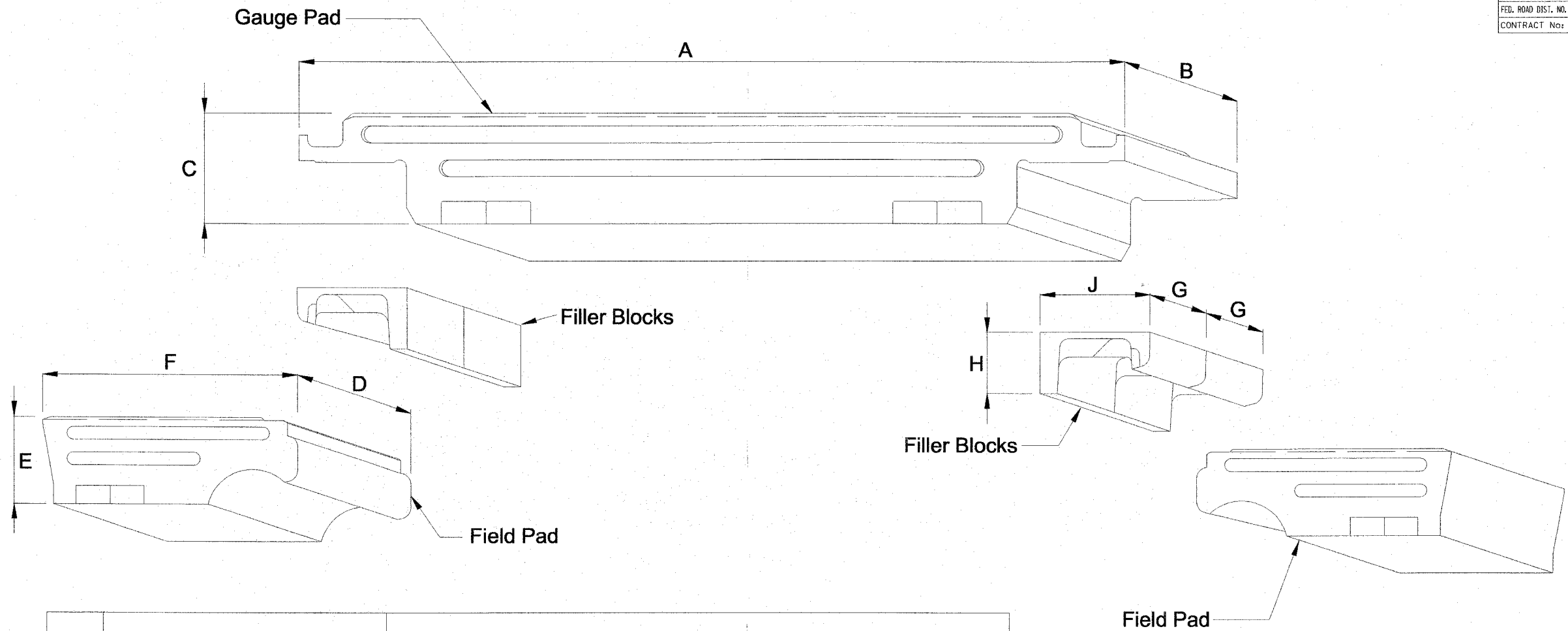


F.A.S. RTE.	SECTION	COUNTY	TOTAL SHEETS	SHEET NO.
1373	00-00058-00-RS	COOK	113	48
STA. N/A		TO STA. N/A		
FED. ROAD DIST. NO.		ILLINOIS	FED. AID PROJECT	
CONTRACT No: 83861				



Weight of Rail	Weight (lbs)					Dimensions (in.)										
	Tie Length			Gauge Pad	Filler Block	Tie Length			E	D	A	C	B	J	H	G
	8'6"	9'0"	10'			8'6"	9'0"	10'								
	Field Pad					F	F	F								
100	204	---	---	504	6.25	22 1/2	---	---	7	36	58 1/4	7	36	7 11/16	3 1/2	18
112-122	225	270	311	555	7.75	22 1/2	25 1/4	30	7 3/4	36	58 1/4	7 3/4	36	7 11/16	4 1/4	18
131-140	238	280	326	590	10	22 1/2	25 1/4	30	8 3/16	36	58 1/4	8 3/16	36	7 11/16	4 3/4	18

REVISIONS		ILLINOIS DEPARTMENT OF TRANSPORTATION  RAILROAD CROSSING DETAIL
NAME	DATE	
SCALE:	VERT. N.T.S.	DRAWN BY HIRAIL
DATE 4/6/06	HORIZ. N.T.S.	CHECKED BY HIRAIL

p:\14300\plans\sheets\F14300pvd0102.dgn  
 5/24/2006  
 5:21:28 PM