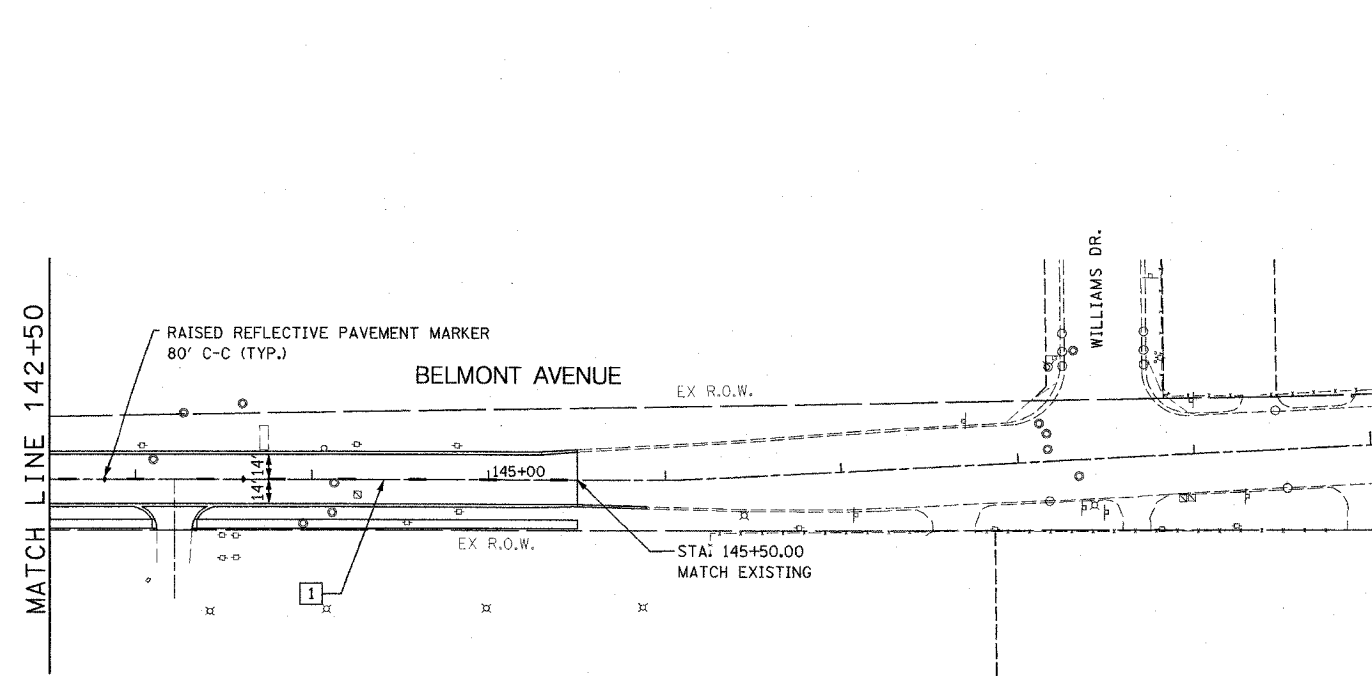
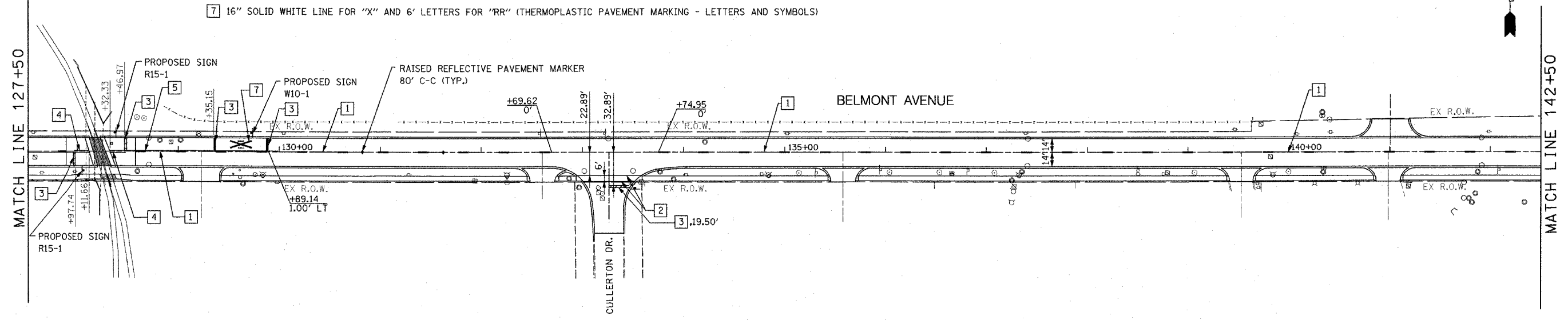


F.A.S. RTE.	SECTION	COUNTY	TOTAL SHEETS	SHEET NO.
1373	00-00058-00-RS	COOK	113	50
STA. 127+50.00		TO STA. 145+50.00		
FED. ROAD DIST. NO.		ILLINOIS	FED. AID PROJECT	
CONTRACT No: 83861				

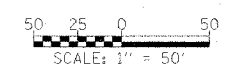
- PAVEMENT MARKING LEGEND**
- 1 4" YELLOW SKIP-DASH (30' SKIP, 10' DASH) (THERMOPLASTIC PAVEMENT MARKING - LINE 4")
 - 2 6" SOLID WHITE LINE (THERMOPLASTIC PAVEMENT MARKING - LINE 6")
 - 3 24" WHITE STOP BAR (THERMOPLASTIC PAVEMENT MARKING - LINE 24")
 - 4 4" DOUBLE YELLOW LINE (11" C-C) (THERMOPLASTIC PAVEMENT MARKING - LINE 4")
 - 5 4" SOLID YELLOW LINE (THERMOPLASTIC PAVEMENT MARKING - LINE 4")
 - 6 4" SOLID WHITE LINE (THERMOPLASTIC PAVEMENT MARKING - LINE 4")
 - 7 16" SOLID WHITE LINE FOR "X" AND 6' LETTERS FOR "RR" (THERMOPLASTIC PAVEMENT MARKING - LETTERS AND SYMBOLS)



NOTES:
 1. FOR SIGN RELOCATIONS AND SIGN REMOVALS SEE DEMOLITION PLAN. ON THIS SHEET, SIGN RELOCATIONS ARE SHOWN AS PROPOSED SIGNS WITH NO FURTHER INFORMATION.

REVISIONS	
NAME	DATE

ILLINOIS DEPARTMENT OF TRANSPORTATION
PAVEMENT MARKING AND SIGNING PLAN
 SCALE: VERT. 1"=50'
 HORIZ. 1"=50'
 DATE 4/6/06
 DRAWN BY MJK
 CHECKED BY BDC



P:\14300\plans\sheets\F14300pvp10102.dgn
 5/24/2006
 5:21:33 PM