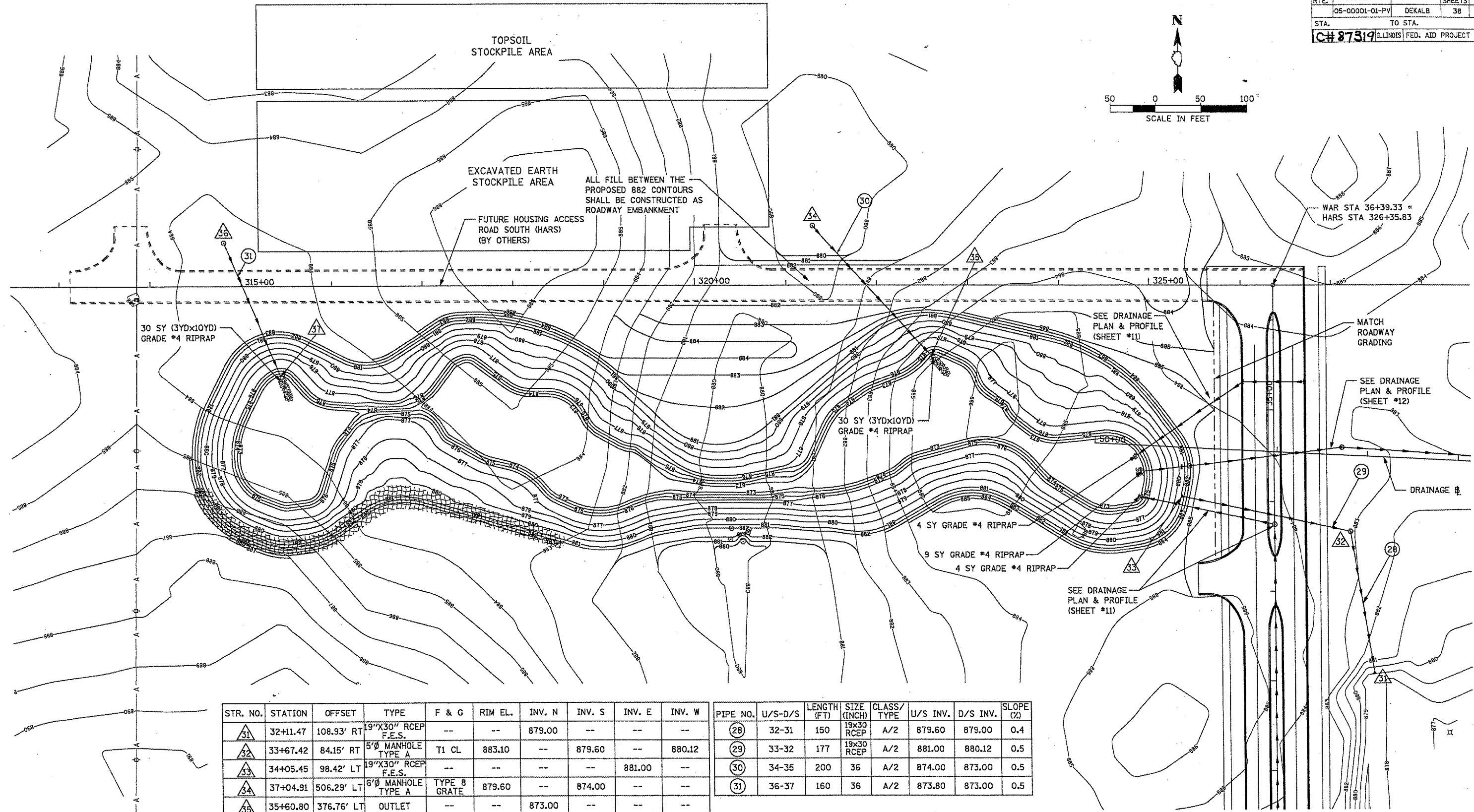
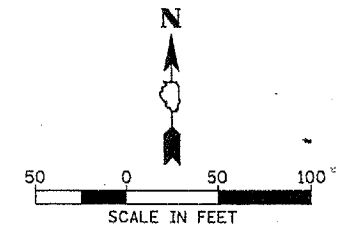


F.A. RTE.	SECTION	COUNTY	TOTAL SHEETS	SHEET NO.
	05-00001-01-PV	DEKALB	38	14
STA.	TO STA.			
C# 87319 ILLINOIS FED. AID PROJECT				



STR. NO.	STATION	OFFSET	TYPE	F & G	RIM EL.	INV. N	INV. S	INV. E	INV. W
31	32+11.47	108.93' RT	19"X30" RCEP F.E.S.	--	--	879.00	--	--	--
32	33+67.42	84.15' RT	5'0" MANHOLE TYPE A	T1 CL	883.10	--	879.60	--	880.12
33	34+05.45	98.42' LT	19"X30" RCEP F.E.S.	--	--	--	--	881.00	--
34	37+04.91	506.29' LT	6'0" MANHOLE TYPE A	TYPE B GRATE	879.60	--	874.00	--	--
35	35+60.80	376.76' LT	OUTLET	--	--	873.00	--	--	--
36	36+87.91	1154.30' LT	6'0" MANHOLE TYPE A	TYPE B GRATE	883.10	--	873.80	--	--
37	35+93.43	1092.87' LT	OUTLET	--	--	873.00	--	--	--

PIPE NO.	U/S-D/S	LENGTH (FT)	SIZE (INCH)	CLASS/TYPE	U/S INV.	D/S INV.	SLOPE (%)
28	32-31	150	19x30 RCEP	A/2	879.60	879.00	0.4
29	33-32	177	19x30 RCEP	A/2	881.00	880.12	0.5
30	34-35	200	36	A/2	874.00	873.00	0.5
31	36-37	160	36	A/2	873.80	873.00	0.5

REVISIONS	
NAME	DATE

ILLINOIS DEPARTMENT OF TRANSPORTATION  
SECTION 05-00001-01-PV  
DEKALB COUNTY  
NORTHERN ILLINOIS UNIVERSITY WEST ACCESS ROAD  
**DETENTION DRAINAGE AND GRADING PLAN**  
SCALE: AS SHOWN  
DATE 05/18/06  
DRAWN BY MWH  
CHECKED BY CRC

HANSON  
 Hanson Professional Services Inc.  
 Copyright Hanson Professional Services Inc. 2006  
 LAYOUT: MWH 02/20/06  
 DRAWN: MWH 05/03/06  
 REVIEWED: CPS 05/17/06  
 PROJECT: ILLINOIS DEPARTMENT OF TRANSPORTATION SECTION 05-00001-01-PV  
 DRAWING: 05-00001-01-PV-14