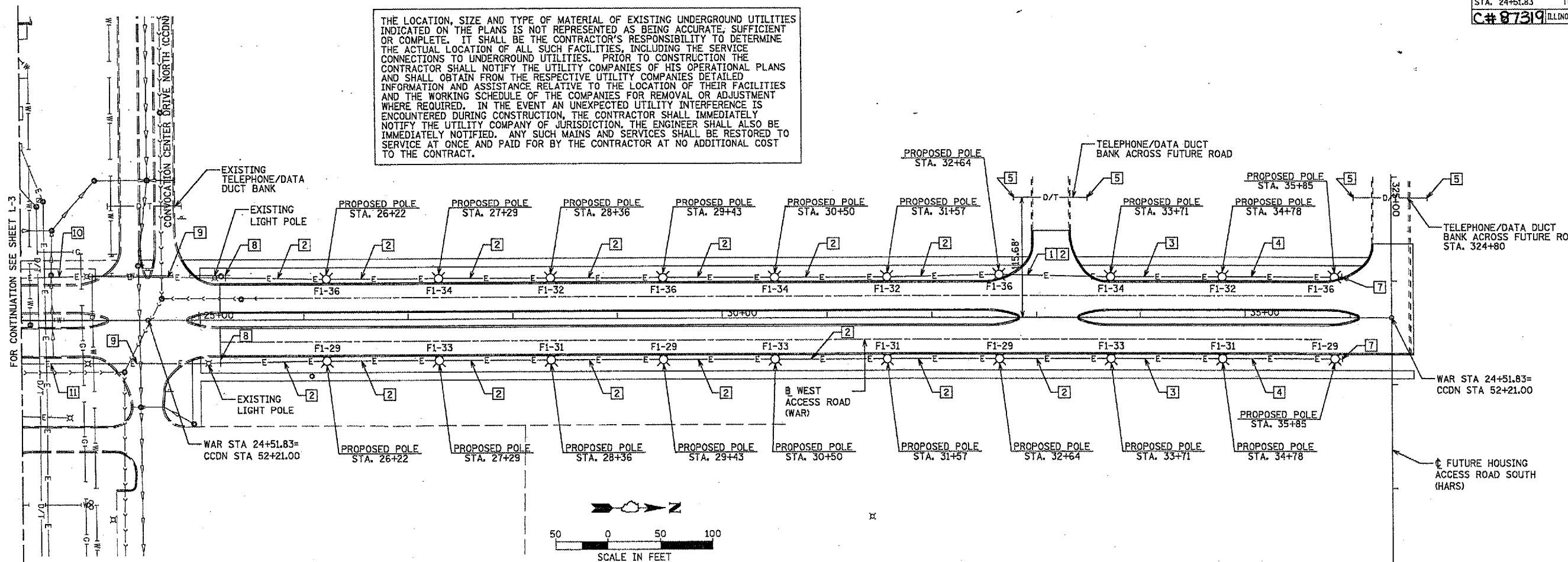


F.A. RTE.	SECTION	COUNTY	TOTAL SHEETS	SHEET NO.
	05-00001-01-PV	DEKALB	38	18
STA. 24+51.83		TO STA. 36+39.33		
C# 87319 ILLINOIS FED. AID PROJECT				

THE LOCATION, SIZE AND TYPE OF MATERIAL OF EXISTING UNDERGROUND UTILITIES INDICATED ON THE PLANS IS NOT REPRESENTED AS BEING ACCURATE, SUFFICIENT OR COMPLETE. IT SHALL BE THE CONTRACTOR'S RESPONSIBILITY TO DETERMINE THE ACTUAL LOCATION OF ALL SUCH FACILITIES, INCLUDING THE SERVICE CONNECTIONS TO UNDERGROUND UTILITIES. PRIOR TO CONSTRUCTION THE CONTRACTOR SHALL NOTIFY THE UTILITY COMPANIES OF HIS OPERATIONAL PLANS AND SHALL OBTAIN FROM THE RESPECTIVE UTILITY COMPANIES DETAILED INFORMATION AND ASSISTANCE RELATIVE TO THE LOCATION OF THEIR FACILITIES AND THE WORKING SCHEDULE OF THE COMPANIES FOR REMOVAL OR ADJUSTMENT WHERE REQUIRED. IN THE EVENT AN UNEXPECTED UTILITY INTERFERENCE IS ENCOUNTERED DURING CONSTRUCTION, THE CONTRACTOR SHALL IMMEDIATELY NOTIFY THE UTILITY COMPANY OF JURISDICTION. THE ENGINEER SHALL ALSO BE IMMEDIATELY NOTIFIED. ANY SUCH MAINS AND SERVICES SHALL BE RESTORED TO SERVICE AT ONCE AND PAID FOR BY THE CONTRACTOR AT NO ADDITIONAL COST TO THE CONTRACT.



HANSON
 Hanson Professional Services Inc.
 Copyright Hanson Professional Services Inc. 2005

LEGEND

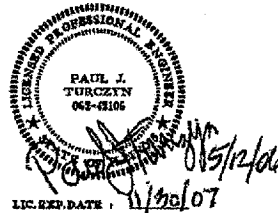
	SANITARY SEWER LINE
	STORM SEWER LINE
	EXISTING PAVEMENT
	EXISTING NATURAL GAS LINE
	EXISTING WATER LINE
	EXISTING UNDERGROUND ELECTRIC LINE
	EXISTING UNDERGROUND DATA/TELEPHONE LINE
	PROPOSED UNDERGROUND ELECTRIC LINE
	PROPOSED ROADWAY LIGHT POLE/FIXTURE
	EXISTING ROADWAY LIGHT POLE/FIXTURE
	MANHOLE
	FIRE HYDRANT
	POWER POLE
	INLET

- PLAN KEYED NOTES:**
- 1 PROVIDE RIGID GALVANIZED STEEL (RGS) CONDUIT BELOW ROADWAYS (PUSHED).
 - 2 4*6, #6G., 1 1/4 "C.
 - 3 3*6, #6G., 1 1/4 "C.
 - 4 2*6, #6G., 1 1/4 "C.
 - 5 EXTEND DUCT 5'-0" PAST BACK OF CURB. EXTEND PVC CONDUITS 1'-0" BEYOND CONCRETE ENCASEMENT AND CAP FOR FUTURE EXTENSION. EXTEND REBAR 1'-0" BEYOND CONCRETE ENCASEMENT AND WRAP WITH TAPE.
 - 6 EXTEND SERVICE CONDUIT 5'-0" BEYOND SIDEWALK AND CAP.
 - 7 EXTEND CONDUIT 3'-0" BEYOND FOUNDATION AND CAP.
 - 8 EXISTING 1 1/4" CONDUIT, EXTEND TO PROPOSED LIGHTING POLES.
 - 9 ADD 2*6 TO EXISTING CONDUIT.
 - 10 ADD 1*6 TO EXISTING CONDUIT.
 - 11 REMOVE EXISTING CONDUCTORS 3*8, #8G. FROM ROADWAY LIGHTING CONDUIT AND INSTALL 4*6, #6G. CONDUCTORS.

- LIGHTING GENERAL NOTES:**
1. IT SHALL BE THE CONTRACTOR'S RESPONSIBILITY TO MARK THE PROPOSED LOCATIONS OF ALL LIGHT POLES FOR EXAMINATION AND CONFIRMATION WITH THE ENGINEER AT THE PRE CONSTRUCTION INSPECTION. THE EXACT LOCATIONS OF ALL ITEMS SHALL BE CONFIRMED WITH THE ENGINEER PRIOR TO STARTING WORK.
 2. THE CONTRACTOR SHALL MAKE SPECIAL NOTE OF THE SPECIFIED REQUIREMENTS FOR BURIED WARNING TAPE, SPECIFIED AS PART OF THE "TRENCH AND BACKFILL FOR ELECTRICAL WORK". THE INSTALLATION OF THE TAPE SHALL BE INSPECTED BY THE ENGINEER PRIOR TO BACKFILLING OR DURING PLOWING OPERATIONS, AS APPLICABLE.

SUMMARY OF QUANTITIES - NIU WEST ACCESS ROAD EXTENSION

LUMINAIRE, METAL HALIDE, CURVILINEAR, 400W (ARCHITECTURAL)	EACH	20
LIGHT POLE, STEEL 20 FT. M.H., SHORT BRACKET - 8 IN.	EACH	20
CONDUIT IN TRENCH, 1 1/4" DIA., PVC	LIN. FT.	2074
CONDUIT PUSHED, 1 1/4" DIA., GALVANIZED STEEL	LIN. FT.	72
ELECTRIC CABLE IN CONDUIT, 600V (XLP-TYPE USE) 1/C, NO. 6	LIN. FT.	12080
ELECTRIC CABLE IN CONDUIT, 600V (XLP-TYPE USE) 1/C, NO. 4	LIN. FT.	1820
GROUNDING ELECTRODE BELOW GRADE	EACH	20
TRENCH AND BACKFILL FOR ELECTRIC WORK	LIN. FT.	2074
REMOVE ELECTRIC CABLE FROM CONDUIT	LIN. FT.	590
LIGHT POLE FOUNDATION	EACH	20
MAINTENANCE OF LIGHTING SYSTEM	EACH	1
CONDUIT ENCASED, REINFORCED CONCRETE, 5" DIA. PVC 3 WIDE X 2 HIGH	LIN. FT.	140



REVISIONS

NAME	DATE

ILLINOIS DEPARTMENT OF TRANSPORTATION
 SECTION 04-00001-00-PV
 DEKALB COUNTY
 NORTHERN ILLINOIS UNIVERSITY WEST ACCESS
 ROAD EXTENSION
**ROADWAY LIGHTING
 PLAN**

SCALE: AS SHOWN
 DATE 05/18/06
 DRAWN BY ANC
 CHECKED BY PJT

L-1

LAYOUT	ANC	02/20/06
DRAWN	ANC	05/23/06
REVIEWED	PJT	04/28/06