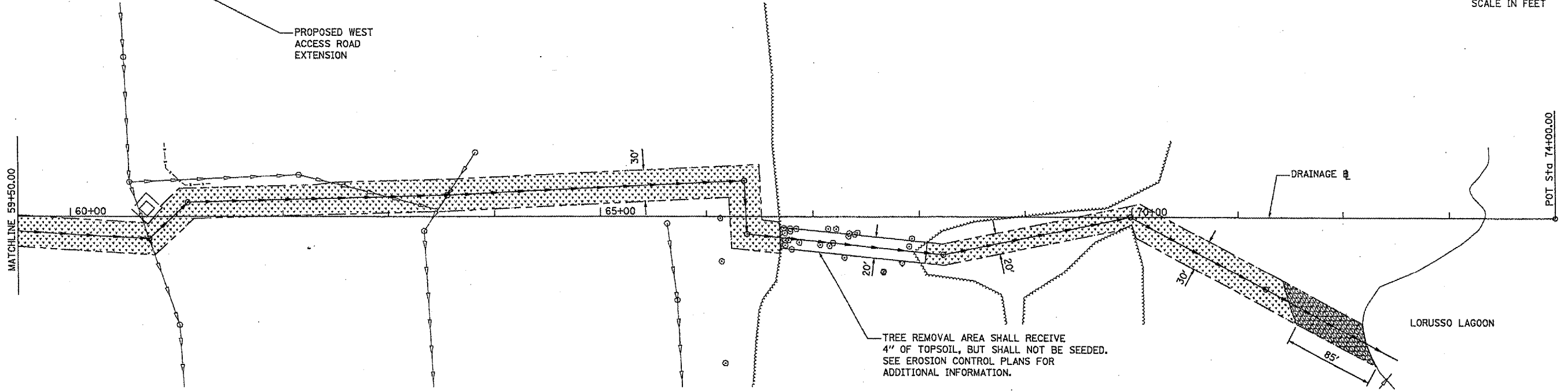
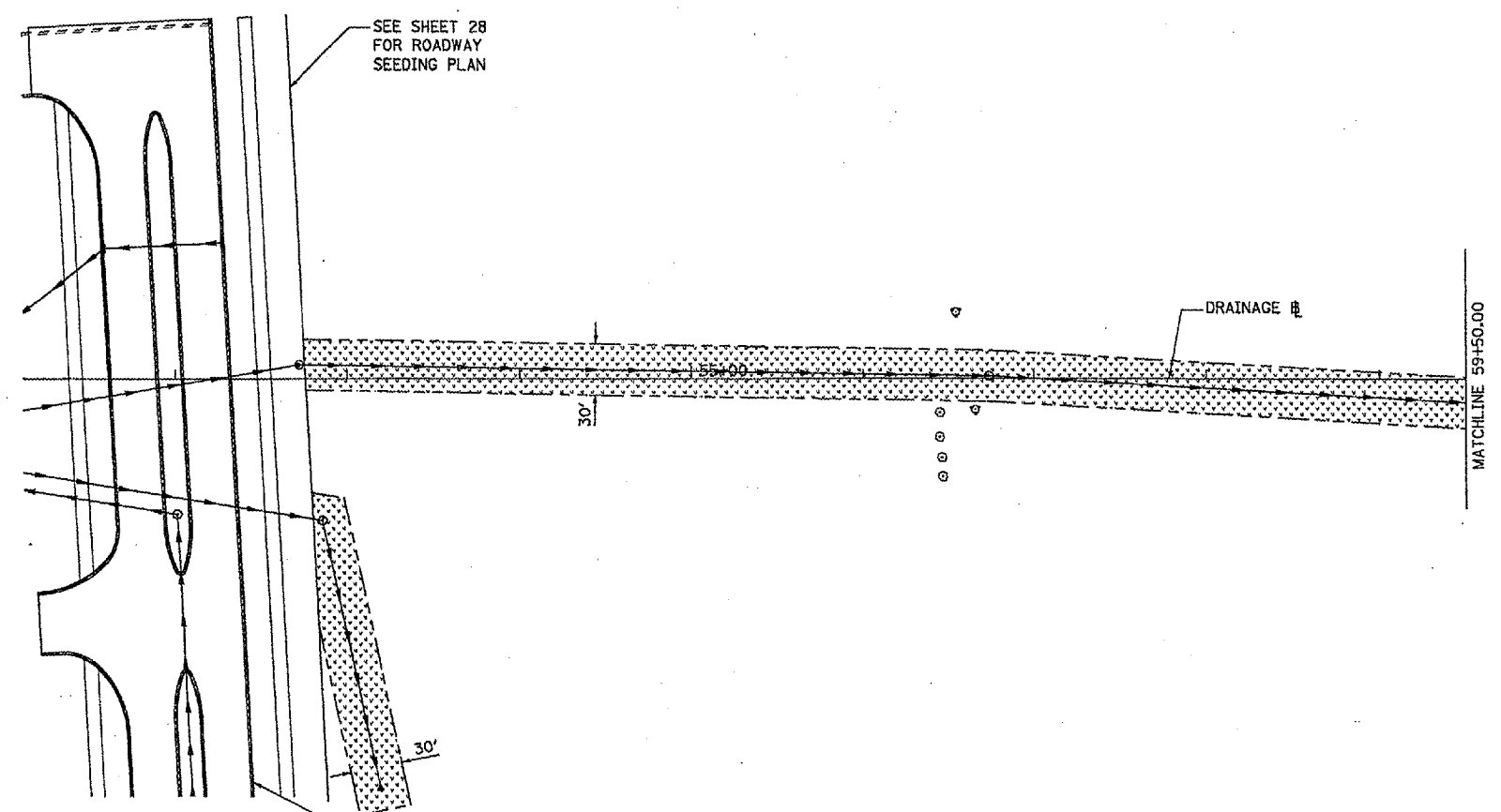


F.A. RTE.	SECTION	COUNTY	TOTAL SHEETS	SHEET NO.
	05-00001-01-PV	DEKALB	38	29
STA. 50+00.00		TO STA. 59+50.00		
C# 87319 ILLINOIS FED. AID PROJECT				

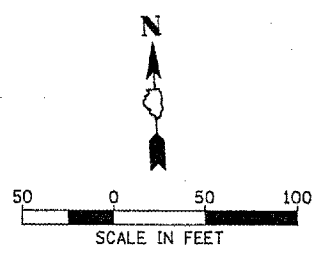


**LEGEND**

- LIMIT OF SEEDING
- [Pattern: Dotted] SEEDING CLASS 1 LAWN MIX
- [Pattern: Horizontal Lines] EMERGENT / SHORELINE SEED MIX
- [Pattern: Vertical Lines] PRAIRIE SEED MIX

**NOTES:**

1. ALL PERMANENT SEEDING AREAS SHALL RECEIVE 4" OF TOPSOIL AND BE HYDRO MULCHED WITH A BONDED FIBER MATRIX ACCORDING TO THE SPECIFIED MULCH METHOD 3, SPECIAL. SEEDING AND HYDRO MULCHING SHALL OCCUR WITHIN 72 HOURS OF ENGINEER'S ACCEPTANCE OF TOPSOIL PLACEMENT.
2. ANY DISTURBED AREAS OUTSIDE THE PAY LIMITS INDICATED HERE SHALL BE RESTORED TO THE SATISFACTION OF THE ENGINEER AT THE CONTRACTOR'S EXPENSE. NO ADDITIONAL COMPENSATION WILL BE ALLOWED.
3. SEE EROSION CONTROL PLAN (SHEET 17) FOR TEMPORARY EROSION CONTROL SEEDING AREA.



HANSON  
 Henson Professional Services Inc.  
 Copyright Henson Professional Services Inc. 2006

LAYOUT: MWH 02/14/06 (mwh)  
 DRAWN: MWH 04/27/06 (05/06/2006, 07/21/06)  
 REVISIONS: CPS 05/17/06 (A05, 05/15/06)

REVISIONS	
NAME	DATE

ILLINOIS DEPARTMENT OF TRANSPORTATION  
 SECTION 05-00001-01-PV  
 DEKALB COUNTY  
 NORTHERN ILLINOIS UNIVERSITY WEST ACCESS ROAD  
  
**SEEDING PLAN**  
  
 SCALE: AS SHOWN  
 DATE: 05/18/06  
 DRAWN BY: MWH  
 CHECKED BY: CRC