

ROUTE NO.	SECTION	TOTAL SHEETS	SHEET NO.
T.R. 87	05-12124-00-BR	9	1
CONTRACT 87329 ILLINOIS		FED. AID PROJ. - BROS-011(68)	

**INDEX OF SHEETS**

SHEET NO.	TITLE
1	COVER SHEET
2	MISCELLANEOUS DETAILS
3	PLAN & PROFILE
4 - 5	CROSS SECTIONS
6	GENERAL PLAN & ELEVATIONS
7	SUPERSTRUCTURE
8	ABUTMENT DETAILS
9	RAILING

STATE OF ILLINOIS  
DEPARTMENT OF TRANSPORTATION  
DIVISION OF HIGHWAYS  
**PLANS FOR PROPOSED  
HIGHWAY BRIDGE PROGRAM**



LAMOILLE ROAD DISTRICT  
SECTION 05-12124-00-BR  
PROJECT NUMBER BROS-011(68)  
BUREAU COUNTY  
T.R. ROUTE 87  
JOB NUMBER C-93-084-06

**STANDARDS:**

515001-02	NAME PLATE FOR BRIDGES
702001-06	TRAFFIC CONTROL DEVICES
BLR 21-6	TRAFFIC CONTROL FOR CONSTRUCTION ON RURAL LOCAL HIGHWAYS

**UTILITIES**

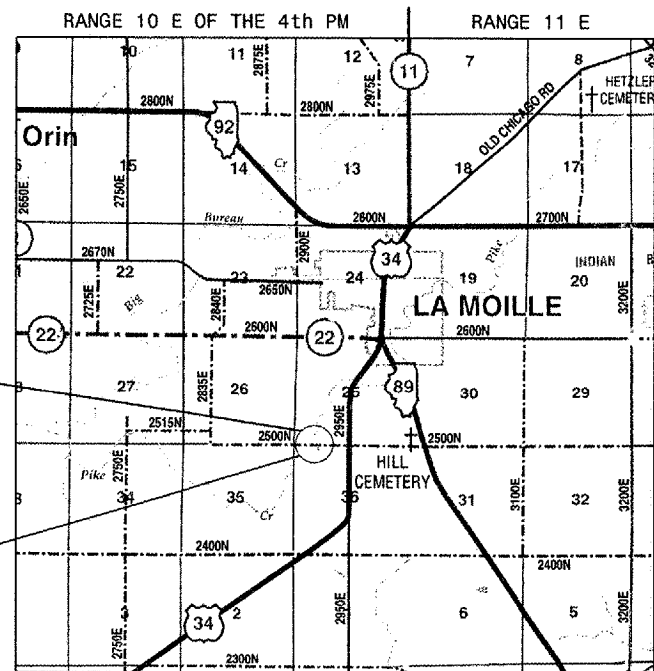
ELECTRIC:	AMEREN IP P. O. BOX 1428 LASALLE, IL 61301 (815) 224-6238
TELEPHONE:	VERIZON COMMUNICATIONS P. O. BOX B KEWANEE, IL 61443 (309) 853-6360

**CALL BEFORE YOU DIG**  
J.U.L.I.E. 800-892-0123



SECTION ENDS  
STA. 12+50

SECTION BEGINS  
STA. 7+50



**LOCATION MAP**

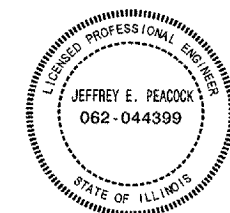
NET LENGTH OF SECTION = 500 FEET = 0.095 MILES  
CLASSIFICATION - LOCAL ROAD  
ADT = 0-250  
CURRENT ADT <150

**SCALES**

PLAN	-----	
PROFILE HORIZ.	-----	
PROFILE VERT.	-----	
CROSS SECTIONS	-----	

"I CERTIFY THAT THESE PLANS WERE PREPARED BY ME OR UNDER MY DIRECT SUPERVISION AND I AM A LICENSED PROFESSIONAL ENGINEER IN THE STATE OF ILLINOIS."

DATE: 4/24/06  
*Jeff E. Peacock*  
COUNTY ENGINEER  
REG. PROF. ENG.# 062-044399  
LICENSE RENEWAL DATE: 11/30/2007



**SUMMARY OF QUANTITIES**

CONSTRUCTION CODE TYPE: X081-2A

CODE NO.	ITEM	UNIT	QUANTITY
20200100	EARTH EXCAVATION	CU YD	196
20300100	CHANNEL EXCAVATION	CU YD	370
20400800	FURNISHED EXCAVATION	CU YD	510
* 25001000	SEEDING, CLASS 2 SPECIAL	ACRE	0.40
* 28101300	DUMPED RIPRAP SPECIAL	TON	369
40200800	AGGREGATE SURFACE COURSE TYPE B	TON	585
50100100	REMOVAL OF EXISTING STRUCTURE	EACH	1
50300225	CONCRETE STRUCTURES	CU YD	18.6
50400605	PRECAST PRESTRESS CONCRETE DECK BEAMS 33" DEPTH	SQ FT	1,864
50800205	REINFORCEMENT BARS, EPOXY COATED	POUND	2,080
* 50900205	STEEL RAILING TYPE S-1	FOOT	156
* 51201000	FURNISH METAL PILE SHELLS 12"	FOOT	405
51202600	DRIVING & FILLING SHELLS	FOOT	405
51203200	TEST PILE METAL SHELLS	EACH	1
51500100	NAME PLATES	EACH	1
* 542D0220	PIPE CULVERTS, CLASS D, TYPE 1 15"	FOOT	60
58300100	PORTLAND CEMENT MORTAR FAIRING COURSE	FOOT	592
67100100	MOBILIZATION	L SUM	1

\* SEE SPECIAL PROVISIONS

CONTRACT NO. 87329

APPROVED 4-26-06 2006

*Richard Dean*  
ROAD DISTRICT COMMISSIONER

APPROVED 4/24/06 2006

*Jeff E. Peacock*  
COUNTY ENGINEER

APPROVED 05-02-2006

*Keith R. Long*  
DISTRICT ENGINEER OF LOCAL ROADS & STREETS

APPROVED 05-02-2006

*Gregory Mounts*  
DEPUTY DIRECTOR DISTRICT ENGINEER/ REGION 2

STATE OF ILLINOIS  
DEPARTMENT OF TRANSPORTATION