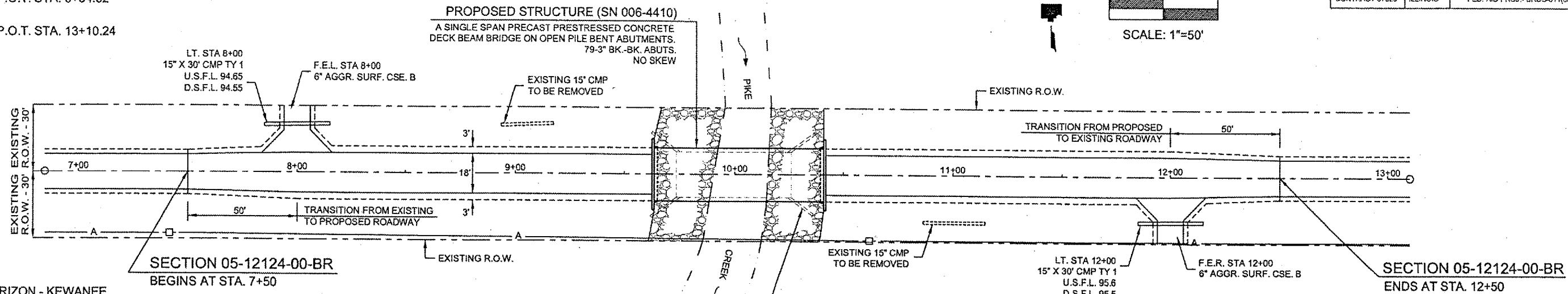
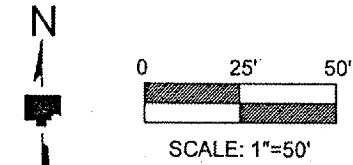


SITE INFORMATION

BENCHMARK: CENTERLINE OF EXISTING BRIDGE AND ROAD - ELEV.: 100.00
 CONTROL PT. #1: P.O.T. STA. 6+84.62 SET IRON PIN
 CONTROL PT. #2: P.O.T. STA. 13+10.24 SET IRON PIN

S.W. 1/4, SEC. 25, T-18-N, R-10-E, 4th P.M.

ROUTE NO.	SECTION	TOTAL SHEETS	SHEET NO.
T.R. 87	05-12124-00-BR	9	3
CONTRACT 87329 ILLINOIS		FED. AID PROJ. - BROS-011(68)	



UTILITIES

TELEPHONE: VERIZON - KEWANEE
 309-853-6293
 POWER: ILLINOIS POWER - LA SALLE
 815-224-6238

THE LOCATIONS OF UTILITY FACILITIES AS SHOWN ON THESE PLANS ARE AN ESTIMATE AND NOT INTENDED AS FIELD LOCATIONS FOR CONSTRUCTION. THE CONTRACTOR IS RESPONSIBLE FOR CONTACTING ALL UTILITIES PRIOR TO CONSTRUCTION AND CALLING J.U.L.I.E. AT 800-892-0123 FOR CONFIRMATION OF EXISTING UTILITY LOCATIONS.

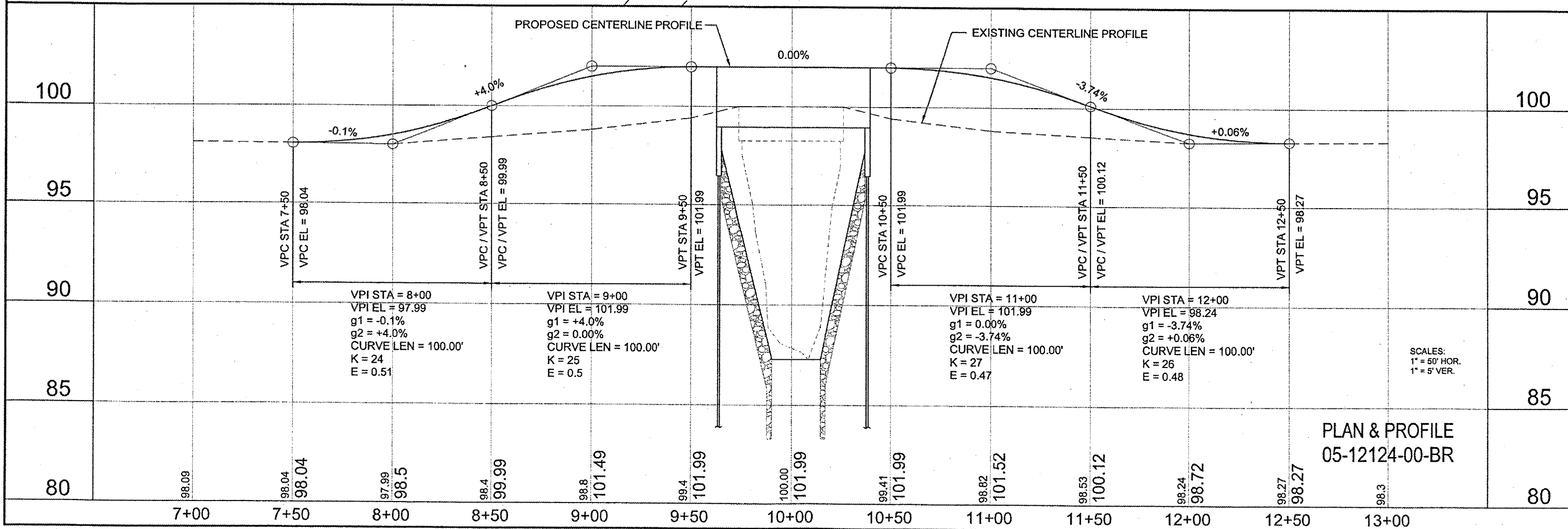
NOTES

REMOVAL AND DISPOSAL OF EXISTING PIPE CULVERTS SHALL BE CONSIDERED INCIDENTAL TO EARTH EXCAVATION.

LEGEND

- Proposed Centerline ————
- Proposed Edge of Pavement ————
- Proposed Edge of Shoulder - - - - -
- Existing R.O.W. ————
- Telephone Cable ———— T ————
- Electrical Aerial Cable ———— A ————
- Waterway ————

N.W. 1/4, SEC. 36, T-18-N, R-10-E, 4th P.M.



PLAN & PROFILE
 05-12124-00-BR

SCALES:
 1" = 50' HOR.
 1" = 5' VER.