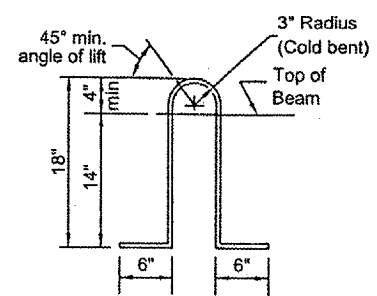
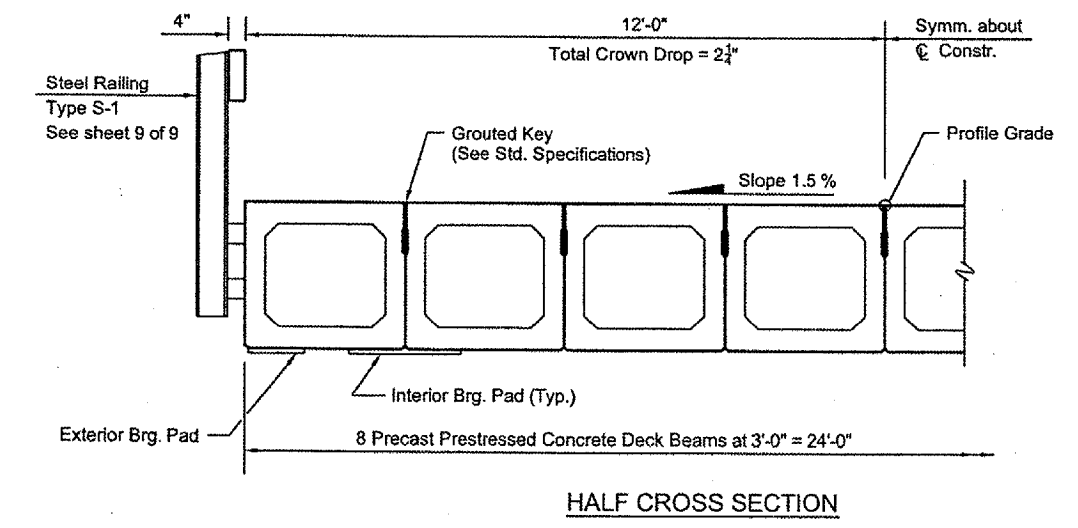
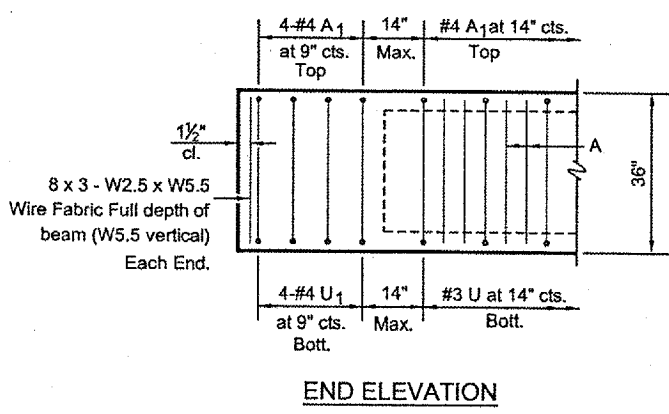
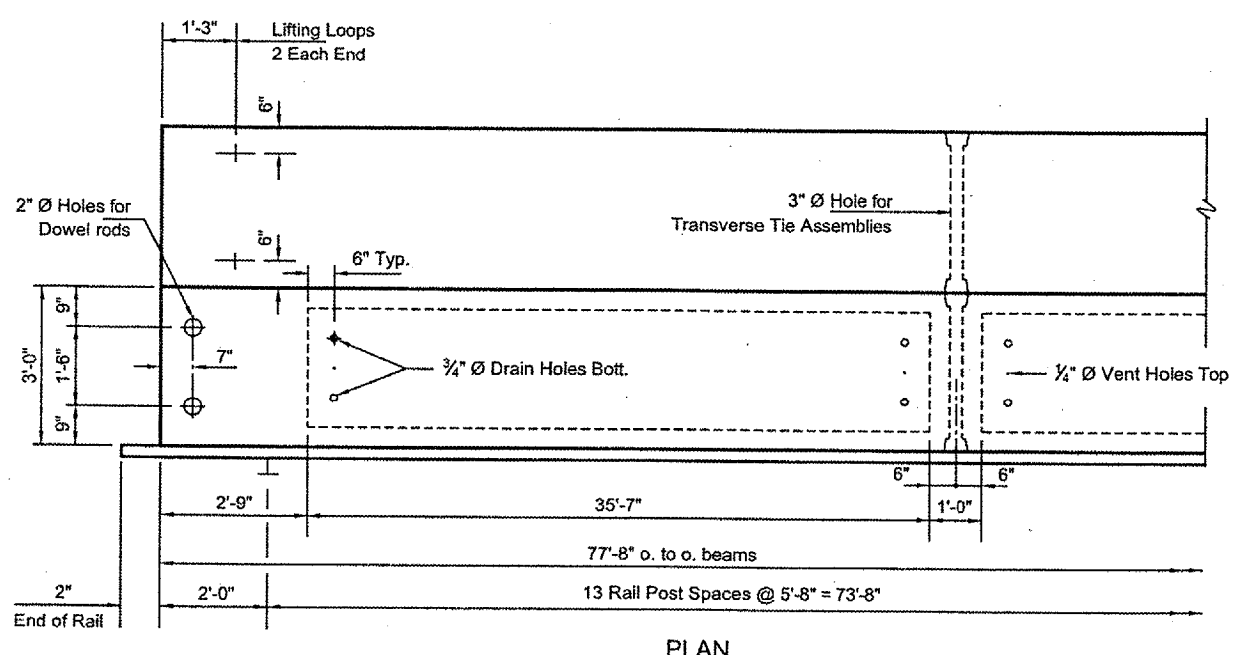
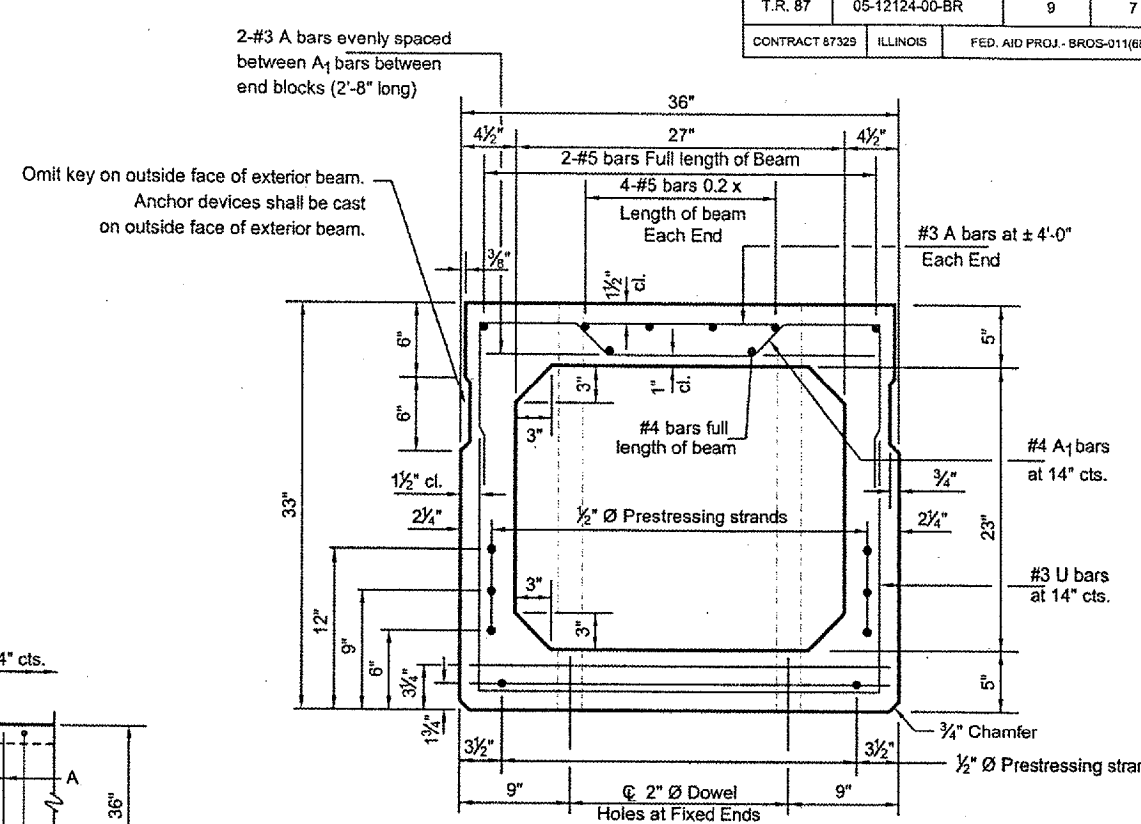
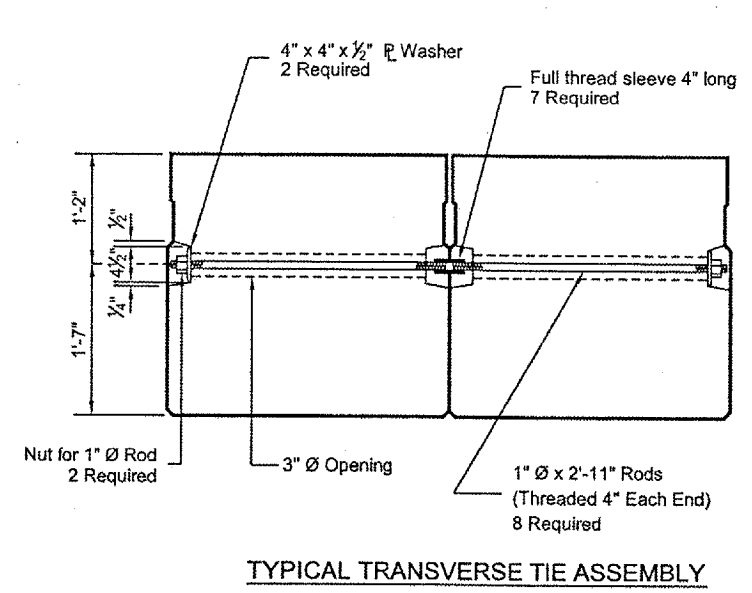
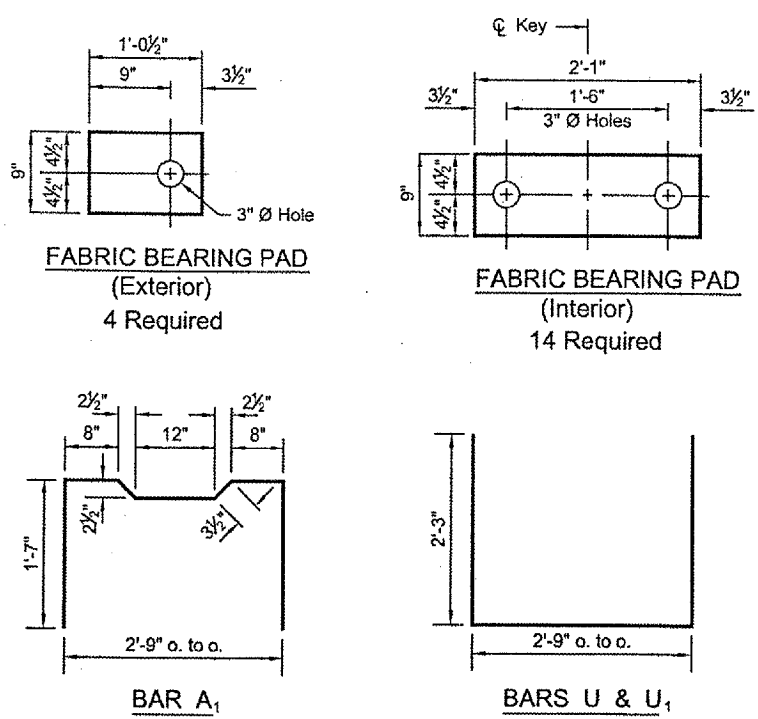


ROUTE NO.	SECTION	TOTAL SHEETS	SHEET NO.
T.R. 87	05-12124-00-BR	9	7
CONTRACT 87329 ILLINOIS		FED. AID PROJ. - BROS-011(68)	



- NOTES**
- Prestressing steel shall be uncoated high strength stress relieved 7-wire strand. Grade 270.
 - The nominal diameter shall be 1/2" and the nominal cross-sectional area shall be 0.153 square inches.
 - Reinforcement bars shall conform to AASHTO M-31, M-42, or M-53, Grade 60.
 - Rail Post anchor devices shall be cast into outside beam as elsewhere specified.
 - When Waterproofing Membrane System is specified, the top surface of the beams shall be finished in accordance with Article 504.06 of the Standard Specifications except that the surface shall not be roughened by brooming. The finished surface shall be free of depressions or high spots with sharp corners, and the top edge of keys shall be rounded or chamfered a minimum of 1/4".
 - Low relaxation strands may be substituted for the stress relieved strands. The initial prestressing force applied to each strand shall be the same as for the stress relieved strands (30,900 lbs.).
 - Keyway surfaces shall be cleaned to removed form oil or other bond breaking material prior to shipment of the beams. Cleaning shall be done by sandblasting the keyway areas between the top of the beam and the bottom edge of the key.
 - The bearing seat surfaces shall be adjusted by shimming to assure firm and even bearing.
 - The 1" Ø rods in the transverse tie assembly shall be tightened to a snug fit and the threads set.
 - Pockets that receive transverse tie bar on outside shall be filled with grout after transverse tie assembly is in place.

Lifting Loops shall be 7 wire stressed relieved or low relaxation, 3/8" Ø - 270 ksi strands. Alternate lifting devices are acceptable upon approval by the Engineer.

BILL OF MATERIAL

ITEM	UNIT	QUANTITY
Precast Prestressed Concrete Deck Beams (33" Depth)	Sq Ft	1,864
Portland Cement Mortar Fairing Course	Foot	592
Steel Railing, Type S-1	Foot	156

SUPERSTRUCTURE
SECTION 05-12124-00-BR
LAMOILLE ROAD DISTRICT TR 87
BUREAU COUNTY
STATION 10+02.29