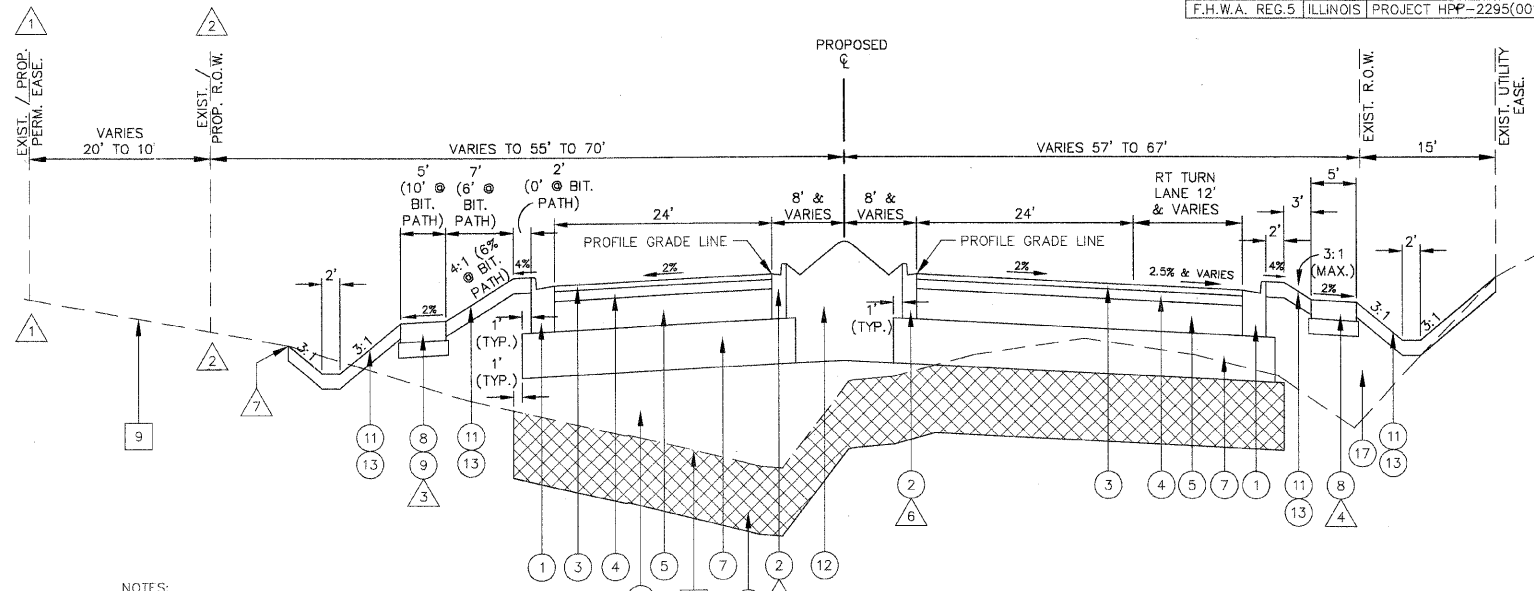
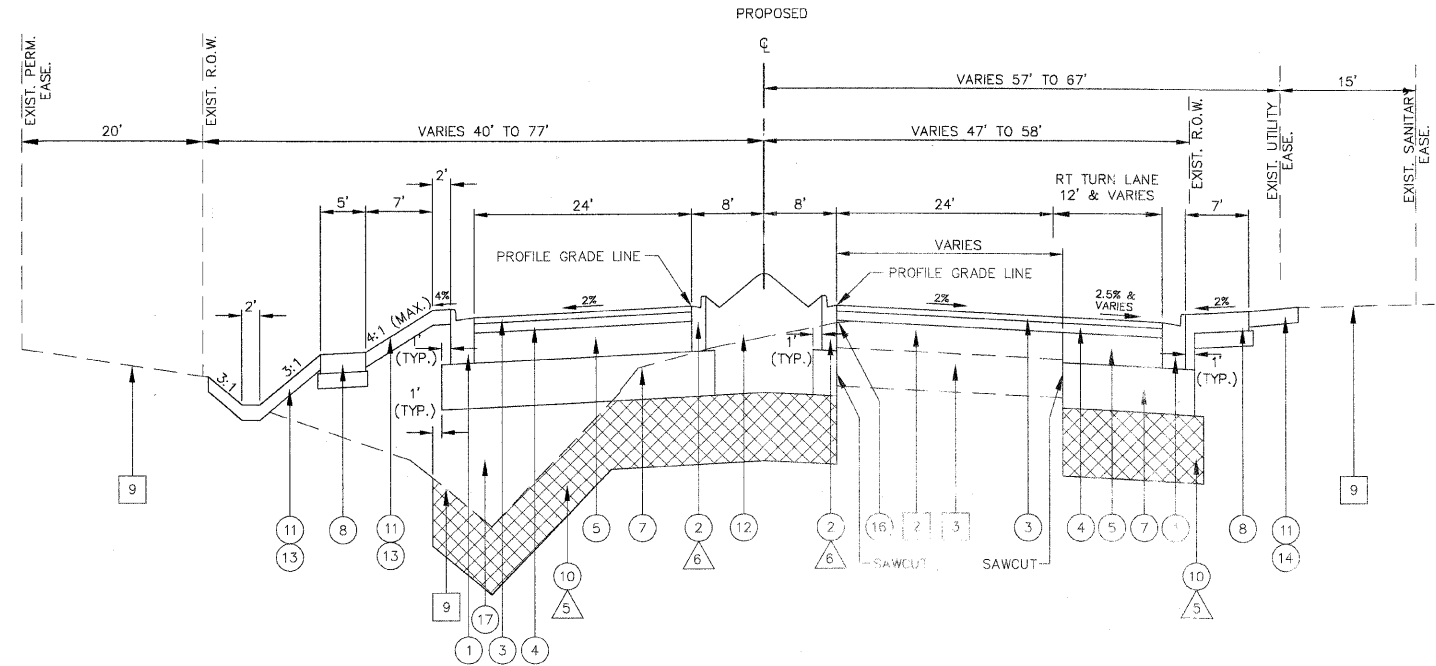


PROPOSED TYPICAL SECTION
 ANNIE GLIDDEN ROAD
 STA. 81+15 TO STA. 84+22

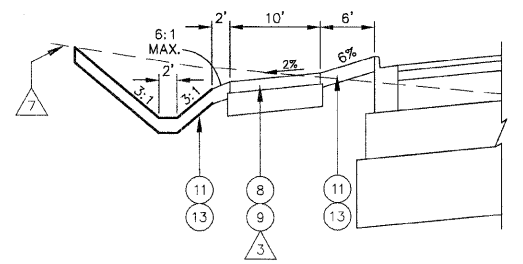


PROPOSED TYPICAL SECTION
 ANNIE GLIDDEN ROAD
 STA. 86+53 TO STA. 87+10
 STA. 90+50 TO STA. 95+13
 STA. 98+42 TO STA. 102+17

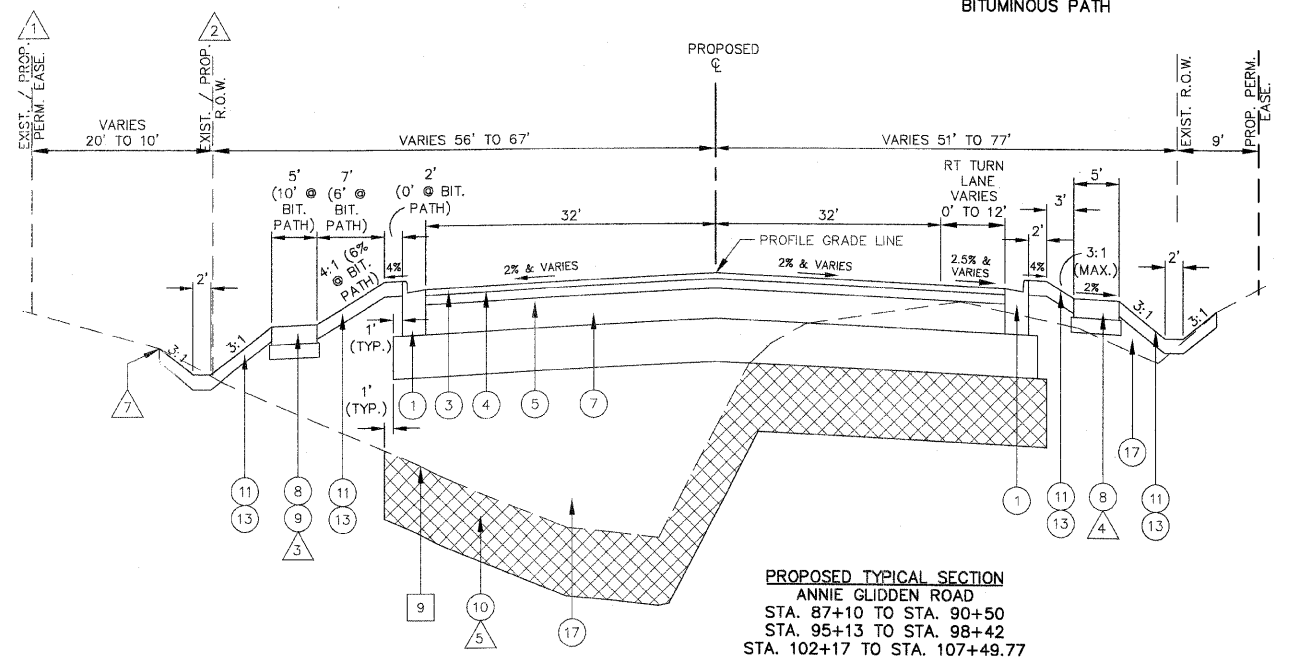


PROPOSED TYPICAL SECTION
 ANNIE GLIDDEN ROAD
 STA. 84+22 TO STA. 86+53

- NOTES:
- 1 20' - EXIST. PERM. EASE. STA. 86+53 TO STA. 94+51 (LT)
 10' - PROP. PERM. EASE. STA. 94+51 TO STA. 102+54 (LT)
 - 2 EXIST. R.O.W. VARIES 70' TO 55' STA. 86+53 TO STA. 94+51 (LT)
 PROP. R.O.W. 55' STA. 94+51 TO STA. 102+54 (LT)
 - 3 5' POC SIDEWALK STA. 86+53 TO STA. 92+63 (LT)
 10' STAB. BIT. PATH STA. 92+63 TO STA. 106+88 (LT)
 (SEE BITUMINOUS PATH TYPICAL SECTION)
 - 4 NO SIDEWALK STA. 87+41 TO STA. 95+41 (RT)
 - 5 UNDERCUT AND PGES LIMITS
 STA. 81+15 TO STA. 105+00
 STA. 108+00 TO STA. 116+50
 STA. 122+50 TO STA. 127+05
 STA. 192+16 TO STA. 194+00
 STA. 200+00 TO STA. 204+50
 SEE NEXT SHEET FOR UNDERCUT AND POROUS GRANULAR EMBANKMENT,
 SPECIAL DETAIL
 - 6 OUTER SLOPE FOR B-6.12 C & G TO BE 2% OUT TOWARD ROADWAY
 PAVEMENT
 - 7 SEE COMPENSATORY STORAGE BASIN GRADING PLAN
 ANNIE GLIDDEN ROAD STA. 98+70 TO STA. 107+00 (LT)
 TAYLOR STREET STA. 200+50 TO STA. 204+35 (LT)
 - 8 OMIT LIFT(S) OF BITUMINOUS CONCRETE BINDER COURSE, 2-1/2"
 STA. 81+15 TO STA. 83+00
 AND AT ALL BUTT JOINT LOCATIONS



PROPOSED TYPICAL SECTION
 ANNIE GLIDDEN ROAD
 STA. 92+63 TO STA. 106+88
 BITUMINOUS PATH



PROPOSED TYPICAL SECTION
 ANNIE GLIDDEN ROAD
 STA. 87+10 TO STA. 90+50
 STA. 95+13 TO STA. 98+42
 STA. 102+17 TO STA. 107+49.77

- PROPOSED TYPICAL SECTION ITEMS**
- | | | |
|---|---|---|
| 1 EXISTING ITEM TO REMAIN - SEE EXISTING TYPICAL SECTION LEGEND | 6 BITUMINOUS BASE COURSE, SUPERPAVE, 6" | 11 TOPSOIL PLACEMENT, 4" |
| 2 COMBINATION CONCRETE CURB AND GUTTER, TYPE B-6.24 | 7 AGGREGATE SUBGRADE, 12" | 12 TOPSOIL PLACEMENT 24" (LANDSCAPED MEDIAN - SEE MEDIAN LANDSCAPING DETAILS) |
| 3 COMBINATION CONCRETE CURB AND GUTTER, TYPE B-6.12 | 8 PORTLAND CEMENT CONCRETE SIDEWALK, 5" WITH AGGREGATE BASE COURSE, TYPE B, 3" | 13 SEEDING CLASS 2A (SEE LANDSCAPING PLAN FOR SEEDING LIMITS) |
| 4 BITUMINOUS CONCRETE SURFACE COURSE, SUPERPAVE, MIX "D", N70, 1-1/2" | 9 STABILIZED BITUMINOUS PATH BITUMINOUS CONCRETE SURFACE COURSE, SUPERPAVE, MIX "C", N50, 3"; AGGREGATE BASE COURSE, TYPE B, 6" | 14 SODDING, SALT TOLERANT (SEE LANDSCAPING PLAN FOR SODDING LIMITS) |
| 5 BITUMINOUS CONCRETE BINDER COURSE, SUPERPAVE, IL-19, N70, 2-1/2" | 10 POROUS GRANULAR EMBANKMENT, SPECIAL 18" WITH GEOTECHNICAL FABRIC FOR GROUND STABILIZATION | 15 AGGREGATE SHOULDERS, TYPE B, 8" |
| | | 16 LEVELING BINDER (MACHINE METHOD), SUPERPAVE, N70 |
| | | 17 EMBANKMENT |