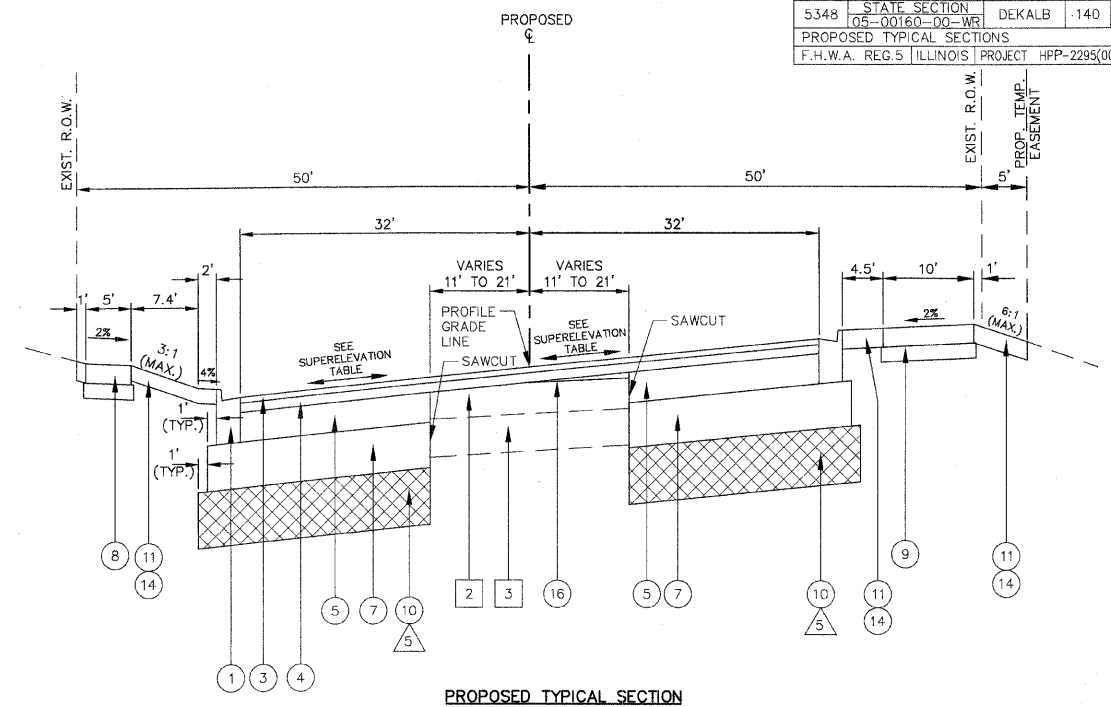
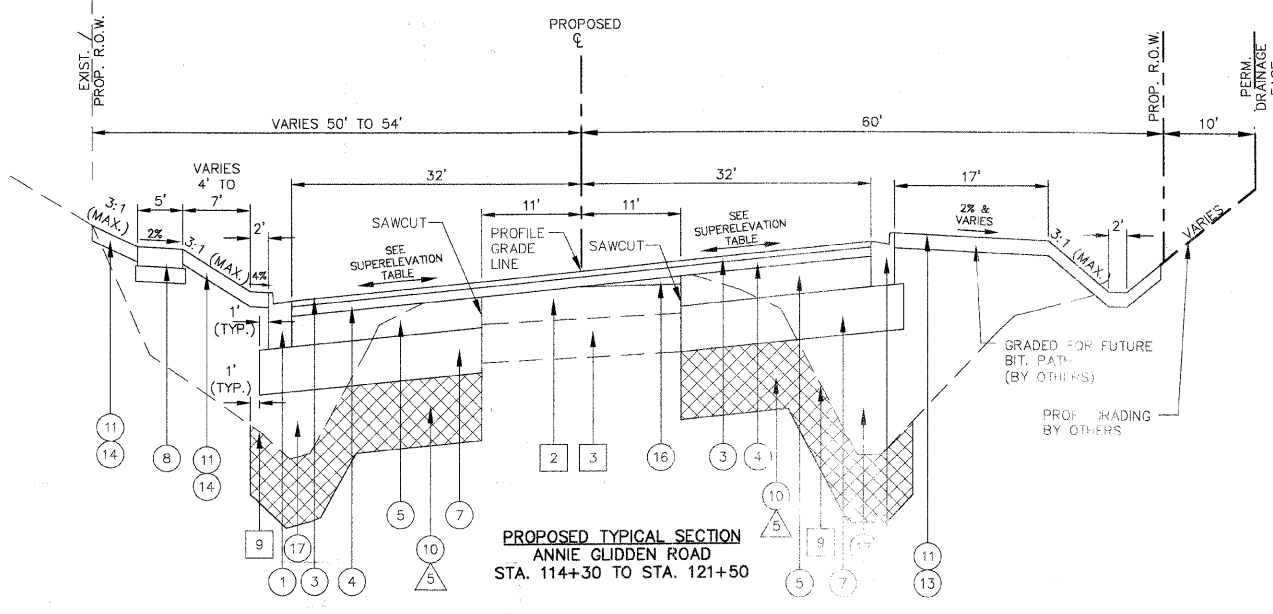


**PROPOSED TYPICAL SECTION**  
 ANNIE GLIDDEN ROAD  
 STA. 107+49.77 TO STA. 114+30

- NOTES:
- 5 UNDERCUT AND FGES LIMITS  
 STA. 81+15 TO STA. 105+00  
 STA. 108+00 TO STA. 116+50  
 STA. 122+50 TO STA. 127+05  
 STA. 192+16 TO STA. 194+00  
 STA. 200+00 TO STA. 204+50  
 SEE BELOW FOR UNDERCUT AND  
 POROUS GRANULAR EMBANKMENT,  
 SPECIAL DETAIL
  - 8 OMIT LIFT(S) OF BITUMINOUS  
 CONCRETE BINDER COURSE, 2-1/2"  
 STA. 81+15 TO STA. 83+00  
 AND AT ALL BUTT JOINT LOCATIONS



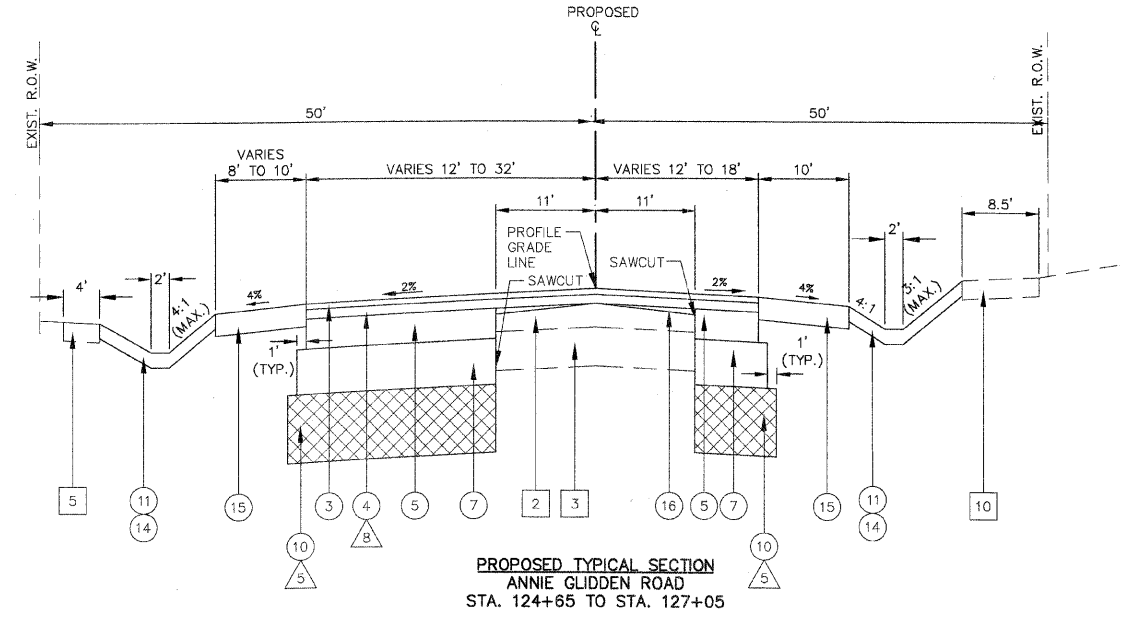
**PROPOSED TYPICAL SECTION**  
 ANNIE GLIDDEN ROAD  
 STA. 121+50 TO STA. 124+65



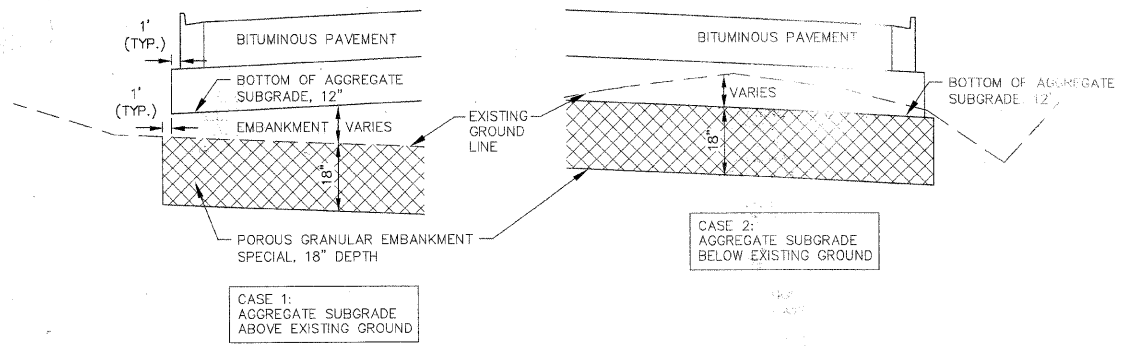
**PROPOSED TYPICAL SECTION**  
 ANNIE GLIDDEN ROAD  
 STA. 114+30 TO STA. 121+50

SUPERELEVATION TRANSITION CURVE 3 / CURVE 4		
STA.	SLOPE LT	SLOPE RT
106+90	2.00%	2.00%
107+30	1.00%	1.00%
107+85	1.00%	1.00%
108+25	0.00%	1.00%
108+65	-1.00%	1.00%
109+85	-3.85%	3.85%
112+10	-3.85%	3.85%
113+10	-1.50%	1.50%
113+70	0.00%	1.50%
114+30	1.50%	1.50%
115+65	1.50%	1.50%
116+25	1.50%	0.00%
116+85	1.50%	-1.50%
117+55	3.11%	-3.11%
122+35	3.11%	-3.11%
122+85	2.00%	-2.00%
123+65	2.00%	0.00%
124+45	2.00%	2.00%

NOTE: SLOPE IS (+) AS DOWN FROM C.L.



**PROPOSED TYPICAL SECTION**  
 ANNIE GLIDDEN ROAD  
 STA. 124+65 TO STA. 127+05



**UNDERCUT AND POROUS GRANULAR EMBANKMENT, SPECIAL DETAIL**

**PROPOSED TYPICAL SECTION ITEMS**

- |   |   |  |
|---|---|--|
| <ul style="list-style-type: none"> <li>1 EXISTING ITEM TO REMAIN - SEE EXISTING TYPICAL SECTION LEGEND</li> <li>2 COMBINATION CONCRETE CURB AND GUTTER, TYPE B-6.24</li> <li>3 COMBINATION CONCRETE CURB AND GUTTER, TYPE B-6.12</li> <li>4 BITUMINOUS CONCRETE SURFACE COURSE, SUPERPAVE, MIX "D", N70, 1-1/2"</li> <li>5 BITUMINOUS CONCRETE BINDER COURSE, SUPERPAVE, IL-19, N70, 2-1/2"</li> <li>6 BITUMINOUS BASE COURSE, SUPERPAVE, 8"</li> </ul> | <ul style="list-style-type: none"> <li>7 BITUMINOUS BASE COURSE, SUPERPAVE, 6"</li> <li>8 AGGREGATE SUBGRADE, 12"</li> <li>9 PORTLAND CEMENT CONCRETE SIDEWALK, 5" WITH AGGREGATE BASE COURSE, TYPE B, 3"</li> <li>10 STABILIZED BITUMINOUS PATH, BITUMINOUS CONCRETE SURFACE COURSE, SUPERPAVE, MIX "C", N50, 3"; AGGREGATE BASE COURSE, TYPE B, 6"</li> <li>11 POROUS GRANULAR EMBANKMENT, SPECIAL 18" WITH GEOTECHNICAL FABRIC FOR GROUND STABILIZATION</li> </ul> | <ul style="list-style-type: none"> <li>12 TOPSOIL PLACEMENT, 4"</li> <li>13 TOPSOIL PLACEMENT, 24" (LANDSCAPED MEDIAN - SEE MEDIAN LANDSCAPING DETAILS)</li> <li>14 SEEDING CLASS 2A (SEE LANDSCAPING PLAN FOR SEEDING LIMITS)</li> <li>15 SODDING, SALT TOLERANT (SEE LANDSCAPING PLAN FOR SODDING LIMITS)</li> <li>16 AGGREGATE SHOULDERS, TYPE B, 8"</li> <li>17 LEVELING BINDER (MACHINE METHOD), SUPERPAVE, N70</li> <li>18 EMBANKMENT</li> </ul> |
|---|---|--|