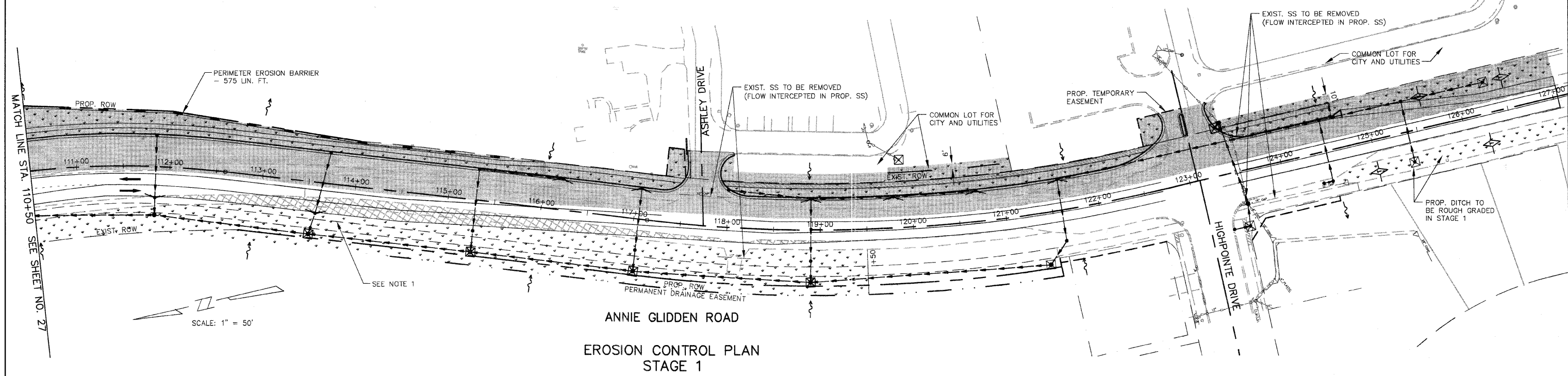
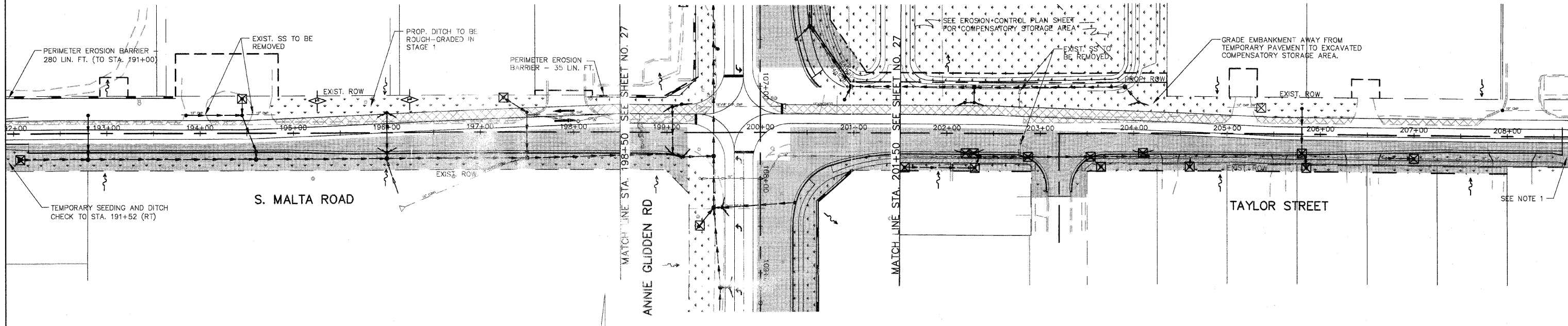


F.A.U. ROUTE	CONTRACT NO.	COUNTY	TOTAL SHEET
5348	87330	DEKALB	140
STATE SECTION			28
05-00160-00-WR			
EROSION CONTROL PLAN - STAGE 1, 1A AND 2A			
F.H.W.A. REG.5 ILLINOIS PROJECT HPP-2295(00T)			



ANNIE GLIDDEN ROAD
EROSION CONTROL PLAN
STAGE 1

- NOTES:
1. QUANTITY FOR TEMPORARY DITCH CHECKS IS PROVIDED FOR INSTALLATION IN EXISTING OR TEMPORARY DITCH AT THIS LOCATION UNTIL EMBANKMENT AND ROUGH GRADING IS COMPLETED FOR PROPOSED DITCHES.



S. MALTA ROAD
ANNIE GLIDDEN RD
TAYLOR STREET
EROSION CONTROL PLAN
STAGE 1

FOR EROSION CONTROL
LEGEND AND NOTES, SEE
SHEET 19