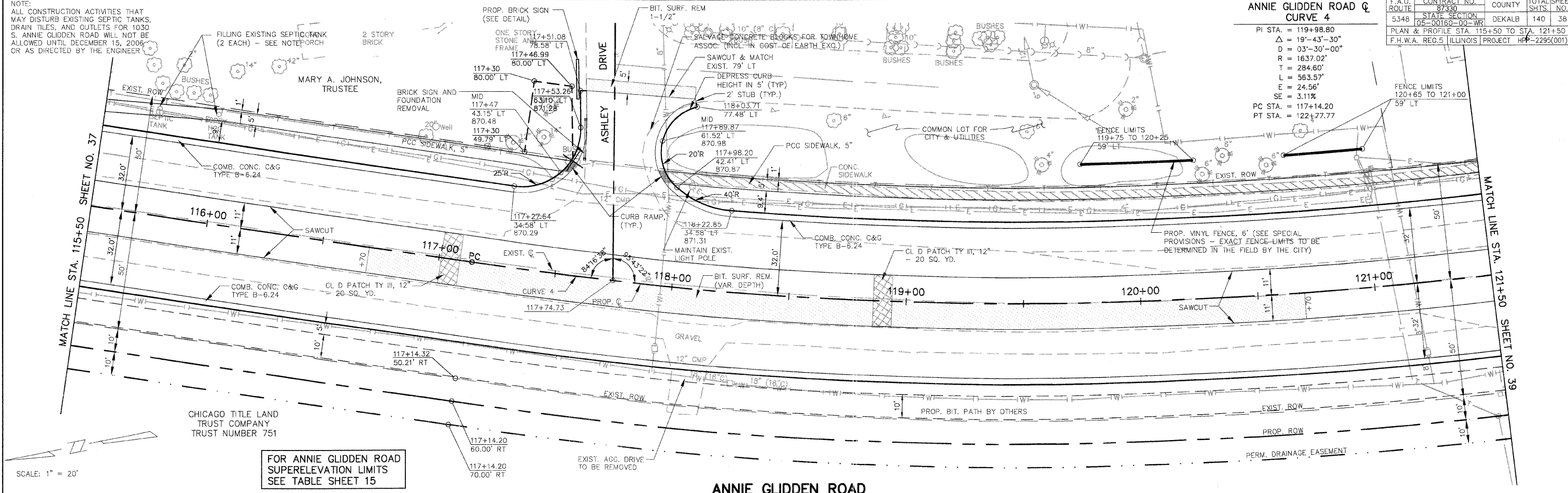


NOTE:
 ALL CONSTRUCTION ACTIVITIES THAT
 MAY DISTURB EXISTING SEPTIC TANKS,
 DRAIN TILES, AND OUTLETS FOR 1030
 S. ANNIE GLIDDEN ROAD WILL NOT BE
 ALLOWED UNTIL DECEMBER 15, 2006
 OR AS DIRECTED BY THE ENGINEER

ANNIE GLIDDEN ROAD & CURVE 4		F.A.U. ROUTE	CONTRACT NO.	COUNTY	TOTAL SHEET
		5348	87330	DEKALB	140
		STATE SECTION	PROJECT		38
		05-00160-00-WR	HFB-2295(001)		
PLAN & PROFILE STA. 115+50 TO STA. 121+50					
F.H.W.A. REG. 5 ILLINOIS PROJECT HFB-2295(001)					



FOR ANNIE GLIDDEN ROAD
 SUPERELEVATION LIMITS
 SEE TABLE SHEET 15

