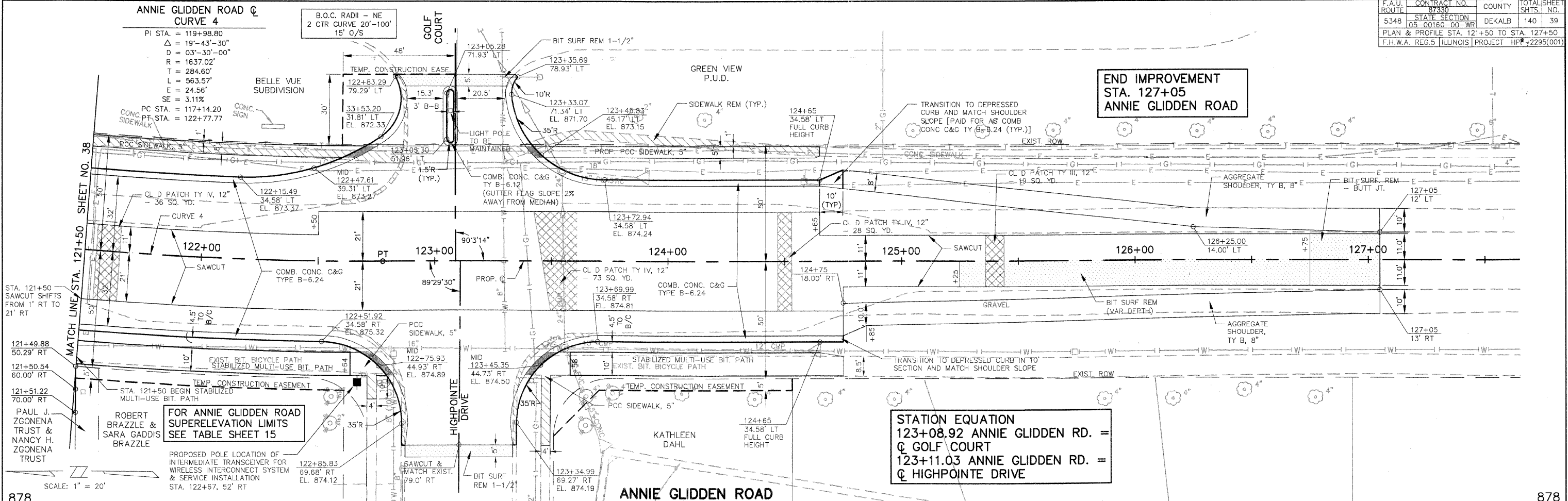


ANNIE GLIDDEN ROAD & CURVE 4

PI STA. = 119+98.80
 $\Delta = 19^\circ-43'-30''$
 $D = 03^\circ-30'-00''$
 $R = 1637.02'$
 $T = 284.60'$
 $L = 563.57'$
 $E = 24.56'$
 $SE = 3.11\%$
 PC STA. = 117+14.20
 PT STA. = 122+77.77

B.O.C. RADII - NE
 2 CTR CURVE 20'-100'
 15' O/S

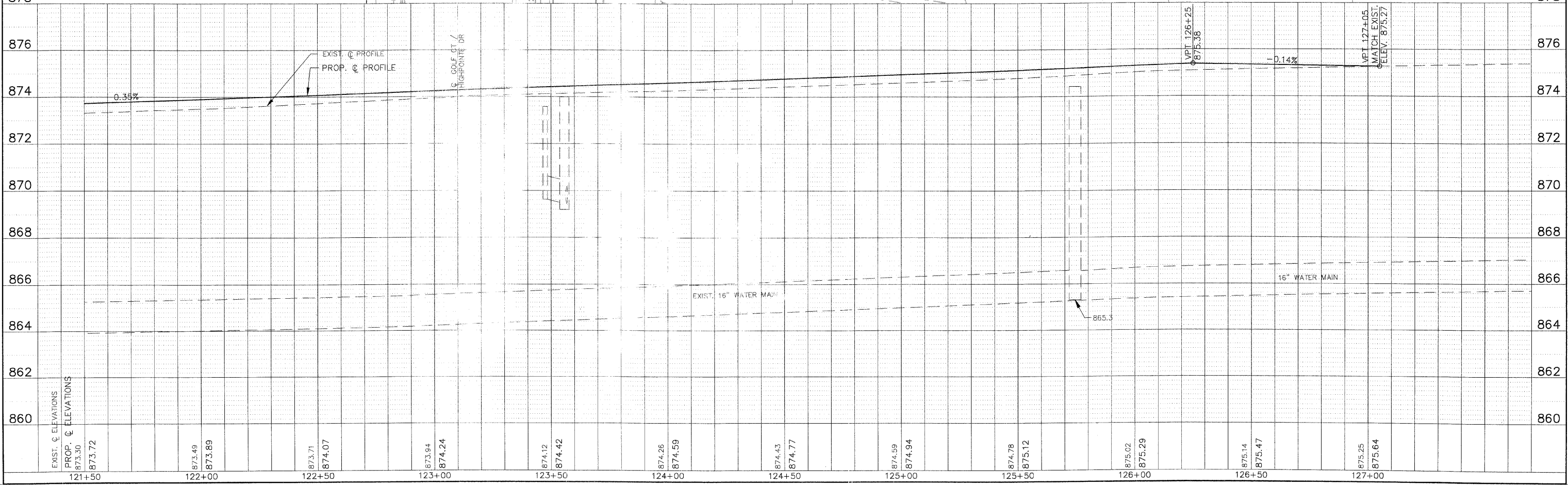


**END IMPROVEMENT
 STA. 127+05
 ANNIE GLIDDEN ROAD**

STATION EQUATION
 123+08.92 ANNIE GLIDDEN RD. =
 & GOLF COURT
 123+11.03 ANNIE GLIDDEN RD. =
 & HIGHPOINT DRIVE

**FOR ANNIE GLIDDEN ROAD
 SUPERELEVATION LIMITS
 SEE TABLE SHEET 15**

SCALE: 1" = 20'



EXIST. & ELEVATIONS	121+50	122+00	122+50	123+00	123+50	124+00	124+50	125+00	125+50	126+00	126+50	127+00
PROP. & ELEVATIONS	873.30	873.49	873.71	873.94	874.12	874.26	874.43	874.59	874.78	875.02	875.14	875.25
	873.72	873.89	874.07	874.24	874.42	874.59	874.77	874.94	875.12	875.29	875.47	875.64