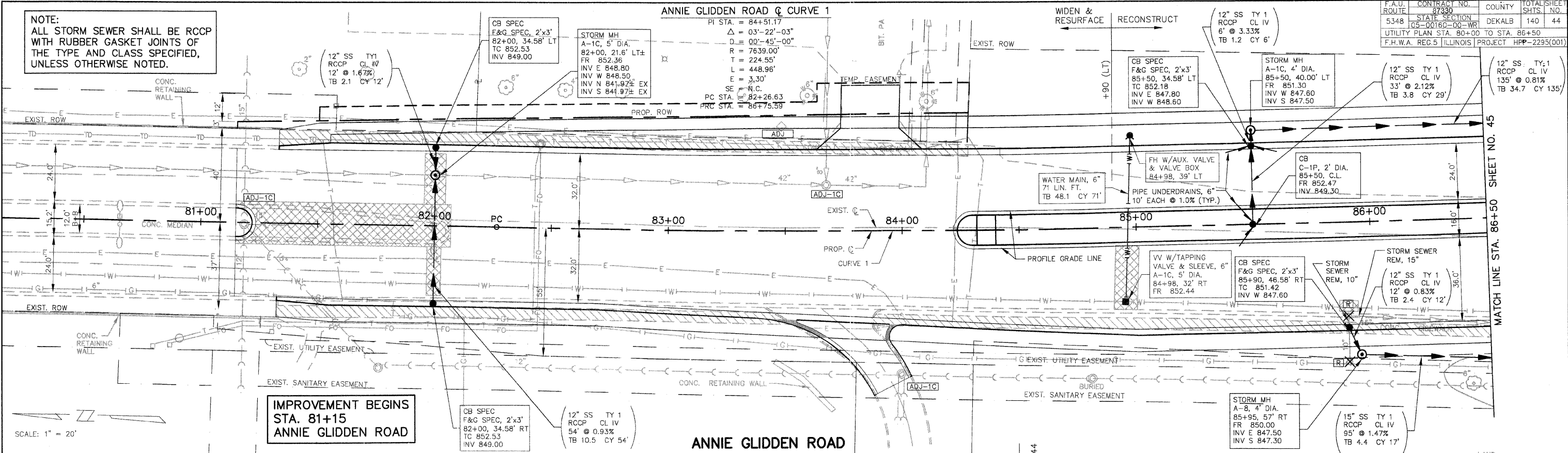


**NOTE:**  
 ALL STORM SEWER SHALL BE RCCP  
 WITH RUBBER GASKET JOINTS OF  
 THE TYPE AND CLASS SPECIFIED,  
 UNLESS OTHERWISE NOTED.

F.A.U. ROUTE	CONTRACT NO.	COUNTY	TOTAL SHEETS
5348	87330	DEKALB	140
STATE SECTION	PROJECT		
GS-00160-00-WR	HPP-2295(001)		
UTILITY PLAN STA. 80+00 TO STA. 86+50			



**IMPROVEMENT BEGINS  
 STA. 81+15  
 ANNIE GLIDDEN ROAD**

SCALE: 1" = 20'

