

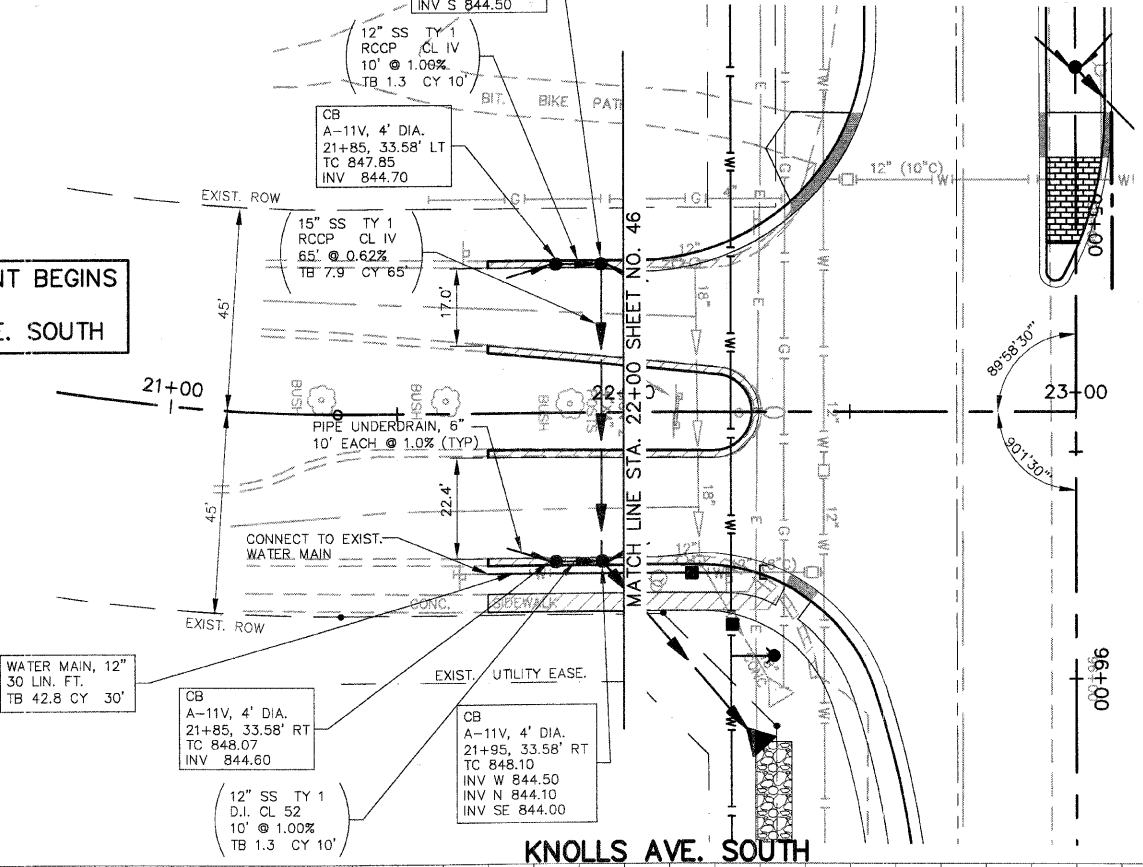
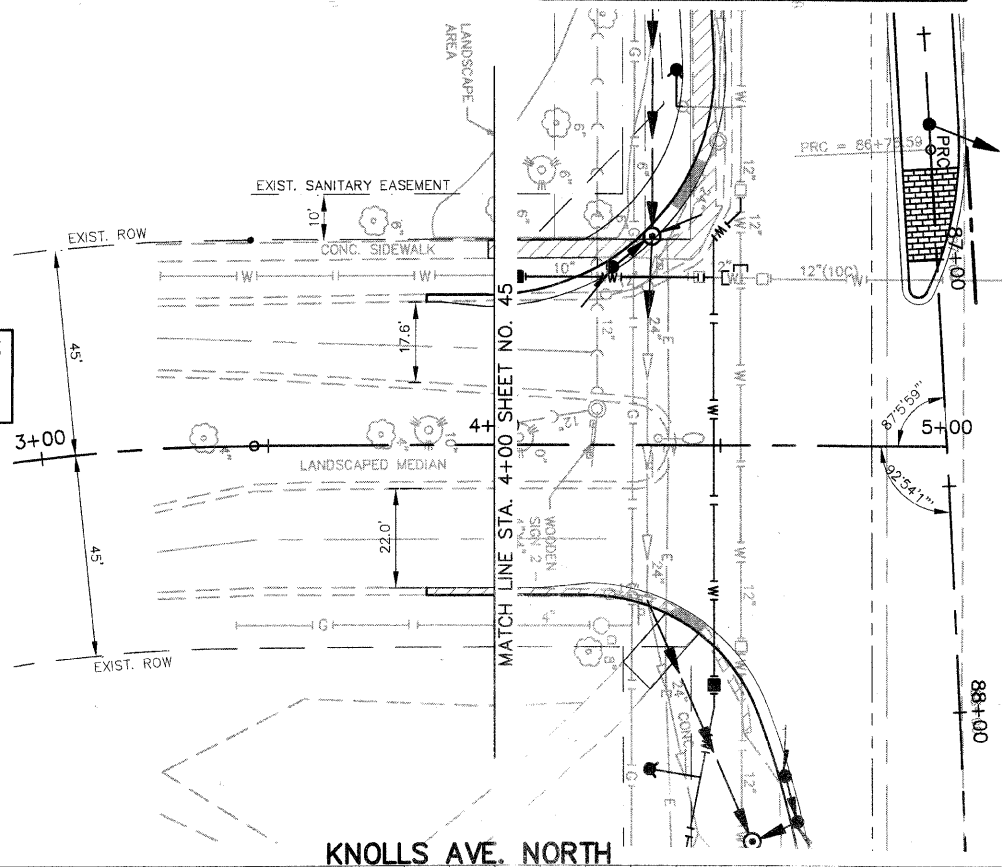
F.A.U. ROUTE	CONTRACT NO.	COUNTY	TOTAL SHEET
5348	87330	DEKALB	140
STATE SECTION	PROJECT	SHTS. NO.	
05-00160-00-WR	UTILITY PLAN KNOLLS AVE. NORTH & SOUTH	140	55
F.H.W.A. REG.5 (ILLINOIS) PROJECT HPA-2295(001)			

STATION EQUATION  
 87+41.22 ANNIE GLIDDEN RD. =  
 5+00 KNOLLS AVE. NORTH

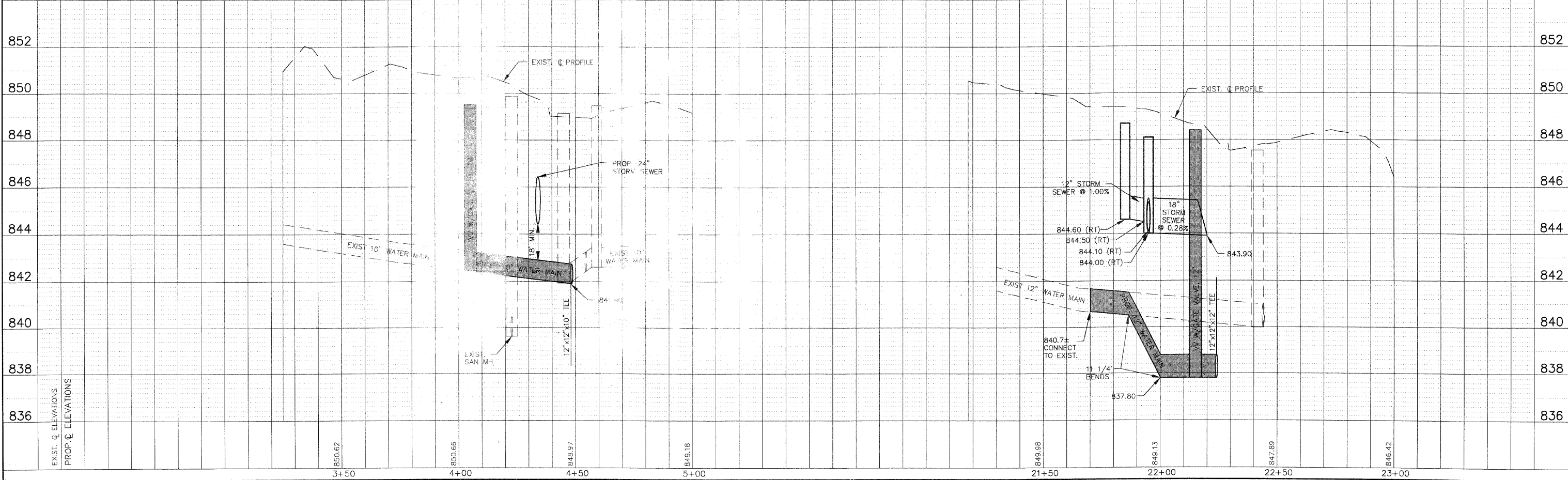
STATION EQUATION  
 95+41.22 ANNIE GLIDDEN RD. =  
 23+00 KNOLLS AVE. SOUTH

IMPROVEMENT BEGINS  
 STA. 3+85  
 KNOLLS AVE. NORTH

IMPROVEMENT BEGINS  
 STA. 21+70  
 KNOLLS AVE. SOUTH



SCALE: 1" = 20'



EXIST. & ELEVATIONS  
 PROP. & ELEVATIONS