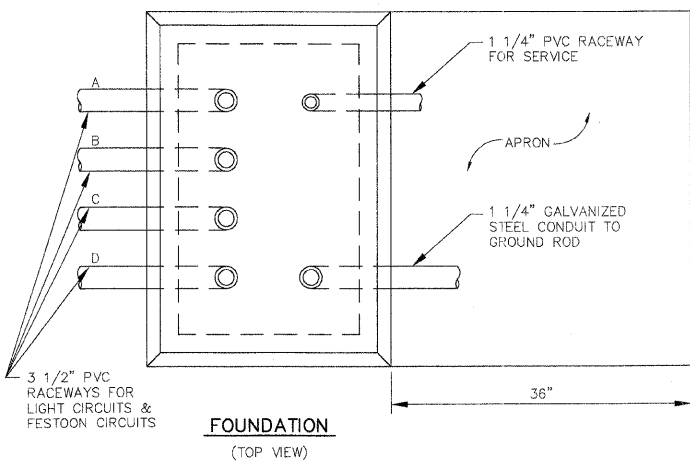
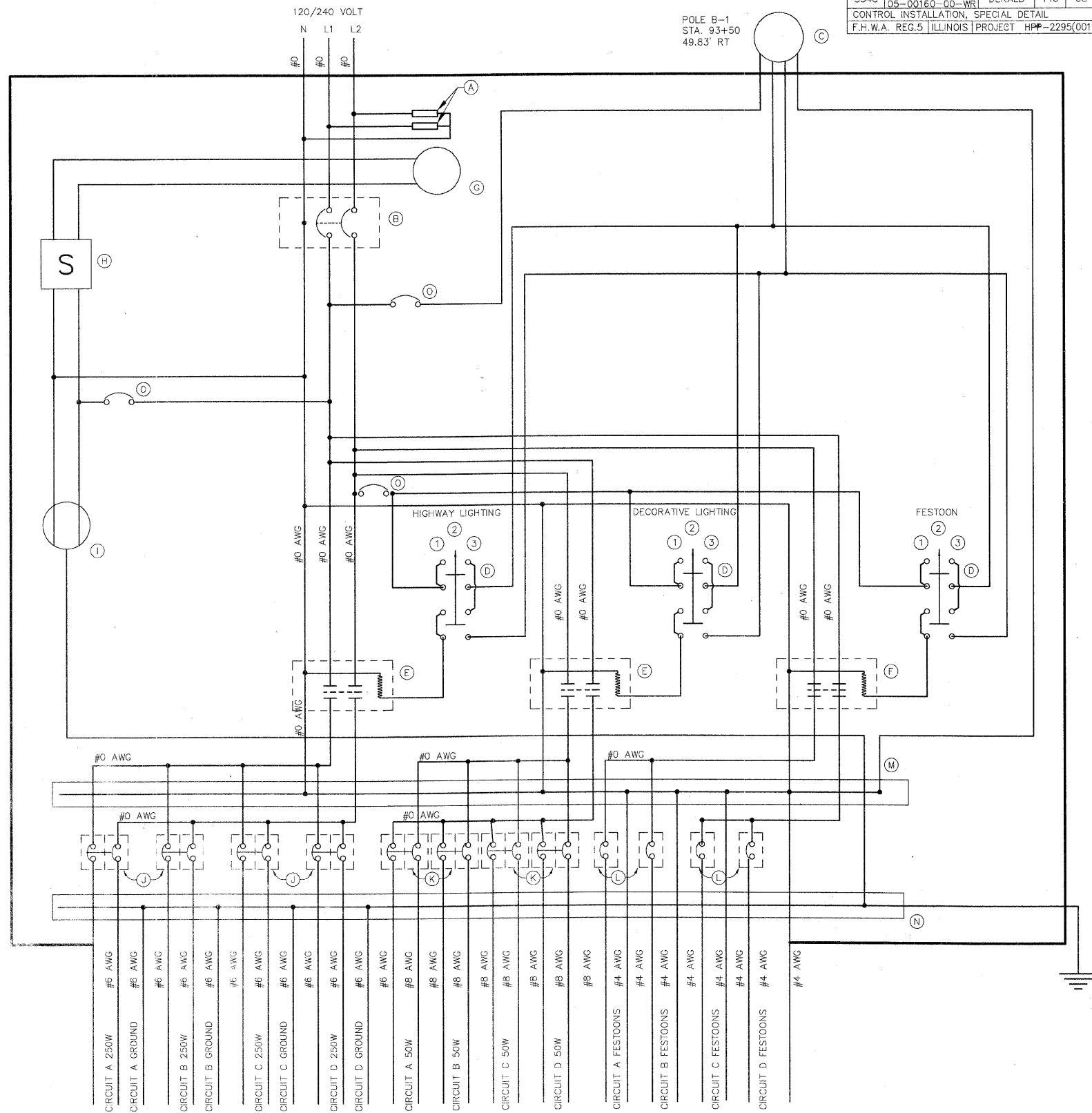
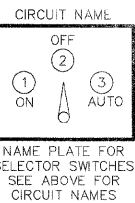


NOTE: CONCRETE FOUNDATION SHALL CONFORM TO STANDARD 878001 FOR TYPE D FOUNDATION.



**ITEMS**

- 1 LIGHTING ARRESTERS
- 1 MAIN CIRCUIT BREAKER - 2 POLE
- 1 PHOTOCELL LOCATED ON POLE
- 1 SELECTOR SWITCH - OFF / MANUAL / AUTO
- 1 CONTROL CONTACTOR, 30 AMP, 2 POLE
- 1 CONTROL CONTACTOR, 100 AMP, 2 POLE
- 1 CABINET LIGHT
- 1 CABINET LIGHT SWITCH
- 1 FLEX RECEPTACLE
- 1 MAIN CIRCUIT BREAKER, 15 AMP, 1 POLE
- 1 MAIN CIRCUIT BREAKER, 15 AMP, 1 POLE
- 1 MAIN CIRCUIT BREAKER, 15 AMP, 1 POLE
- 1 NEUTRAL BUS BAR - 6 CONNECTORS FOR #6 WIRE
- 1 GROUND BUS BAR - 6 CONNECTORS FOR #6 WIRE
- 1 CIRCUIT BREAKER, 20 AMP, 1 POLE



NOTE: 1. ALL CONTROLLER WIRING SHALL BE STRANDED COPPER. ALL CONTROLLER WIRING SHALL BE #12 AWG UNLESS OTHERWISE NOTED.  
2. NEUTRAL AND GROUND TO BE BONDED TOGETHER AT THE SERVICE DISCONNECT.

DIVISION OF TRANSPORTATION	
CONTROL INSTALLATION, SPECIAL	
ANNIE GLIDDEN RD	
NAME	DATE
REVISIONS	
SCALE: NONE	DRAWN BY: JMH
DATE: 5-26-04	CHECKED BY: DAY