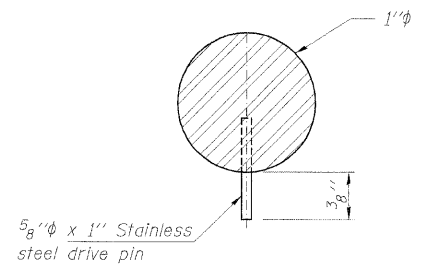
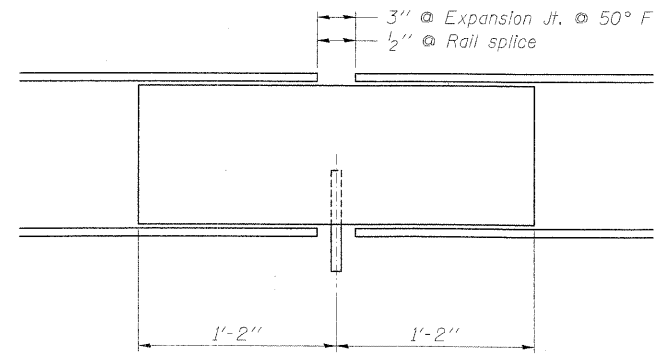


F.A.U. ROUTE	CONTRACT NO.	COUNTY	TOTAL SHEETS
5348	87330	DEKALB	140
STATE SECTION			82
05-00160-00-WR			
CULVERT DETAILS			
F.H.W.A. REG. 5 [ILLINOIS PROJECT HPP-2295(001)]			



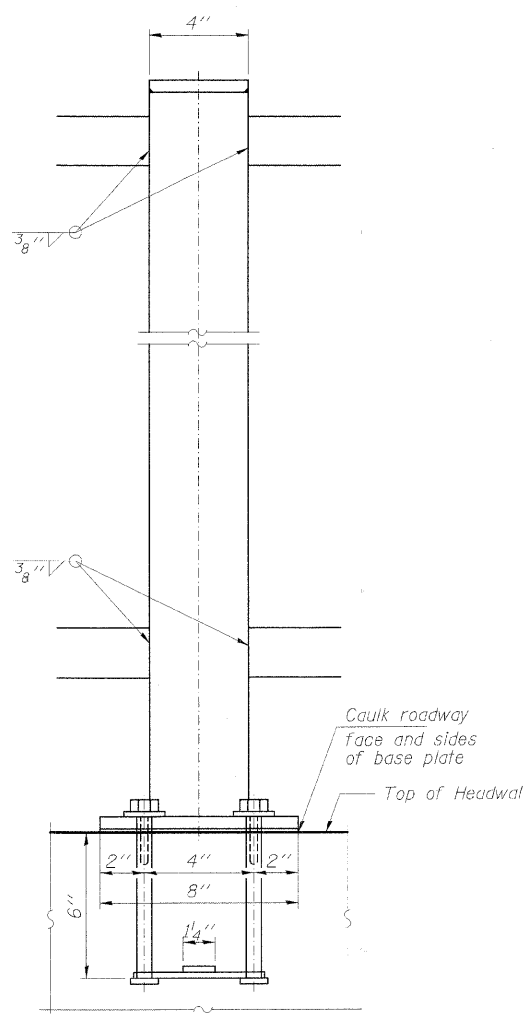
**TOP & BOTTOM RAIL
SPLICE BAR**



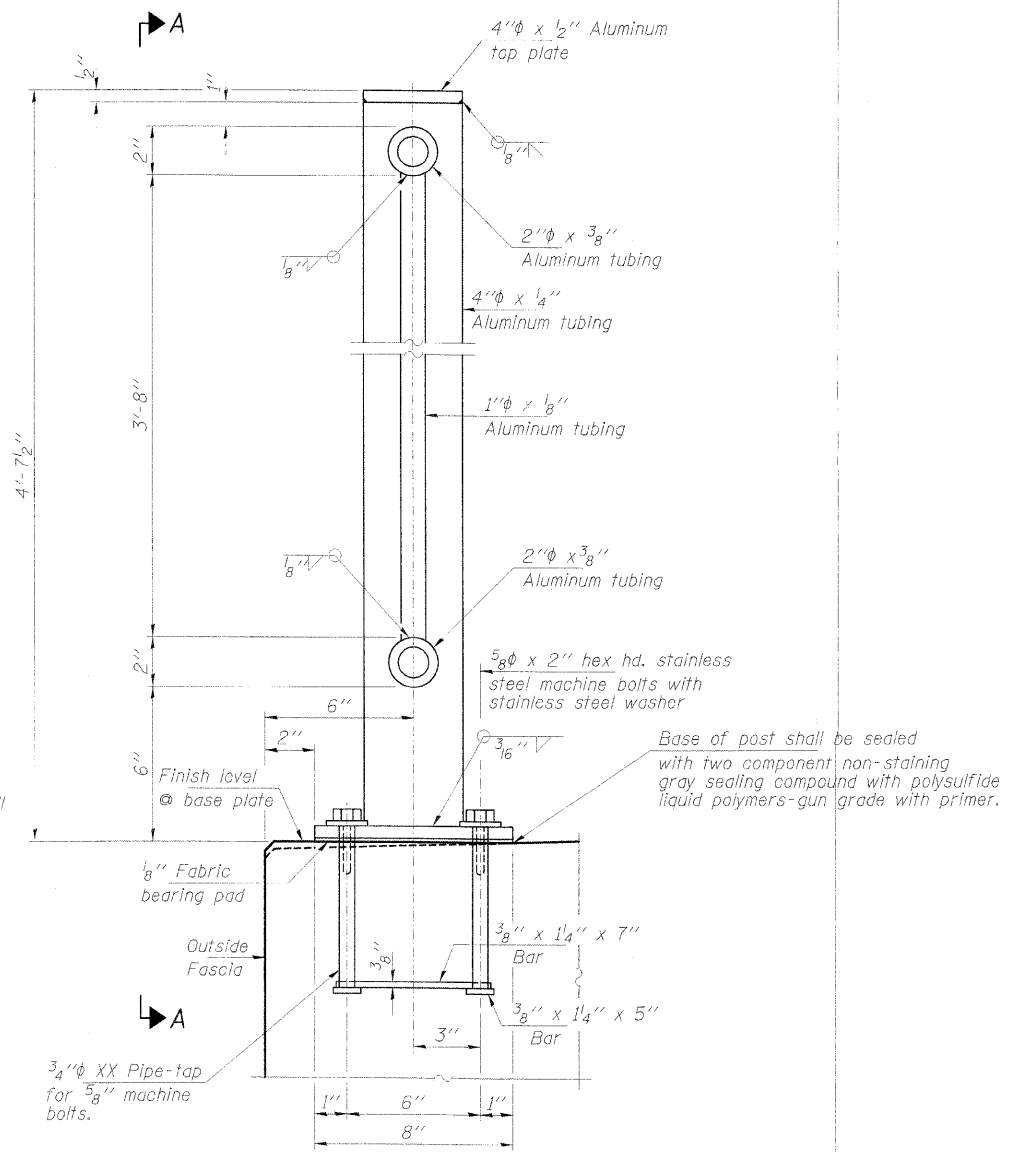
RAIL SPLICE

NOTES

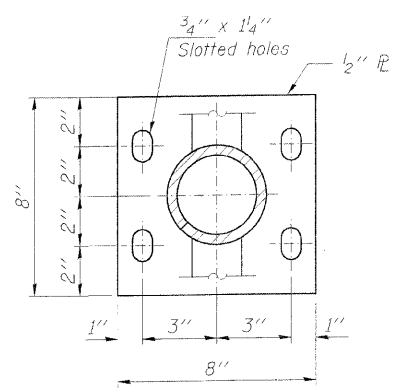
All Posts shall be vertical.
 All Aluminum Alloy Extruded Rail shall be supplied in modular lengths of 30 feet, except at the end of bridge or over open joints in bridge deck where the rail shall be attached to a minimum of 2 posts.
 All joints in rail shall be spliced per detail.
 Provide 1-8" and 2-16" Aluminum Shims for 25% of the Posts.
 Rail elements shall be parallel to Grade. High spots will be ground and low spots shimmed.
 Railing shall be in accordance with Section 509 of the Standard Specifications, except as noted, and will be paid for at the contract unit price per foot for ALUMINUM RAILING.
 Aluminum alloy rail shall conform to ASTM B221 alloy 6061-T6 or 6351-T5 with min. yield 35,000 psi, min. tensile 38,000 psi, and elongation of 10% in 2".
 Drilled and grouted anchor bolts may be substituted for the rail anchorage assembly. The anchor bolts shall be approved by the engineer.



VIEW A-A



SECTION AT RAIL POST



BASE PLATE

HLR

Rice, Berry and Associates
 A Division of Hampton, Lenzini and Renwick, Inc.
 Civil & Structural Engineers

3085 Stevenson Drive
 Suite 201
 Springfield, Illinois 62703
 217-546-3400

Account Number
 03-03-0167-x

Date: 12/29/05

DESIGNED: S.W.S. CHECKED: S.W.M. DRAWN: D.B.

RAILING DETAILS

F.A.U. ROUTE 5348 / ANNIE GLIDDEN ROAD

SECTION 05-00160-00-WR

CITY OF DEKALB

STATION 97+50