

F.A.S. RTE.	SECTION	COUNTY	TOTAL SHEETS	SHEET NO.
479	05-00047-09-RS	McLEAN	4	1

INDEX OF SHEETS

- Cover Sheet
- Typical Cross Section & Typical Details
- Special Details Sheets

**STATE OF ILLINOIS
DEPARTMENT OF TRANSPORTATION
DIVISION OF HIGHWAYS**

**PLANS FOR PROPOSED
McLEAN COUNTY FEDERAL AID SECONDARY (STP-SR)
STANFORD-McLEAN RD (CH 59)**

**F.A.S. ROUTE 479 SECTION 05-00047-09-RS
PROJECT #RS-479(107)
JOB #C-95-303-06**

STATE STANDARD DETAILS

- 701001-01 OFF-RD OPERATIONS 2L, 2W, MORE THAN 4.5M (15') AWAY
- 701006-02 OFF-RD OPERATIONS 2L, 2W, 4.5M (15') TO 600M (24") FROM PAVEMENT EDGE
- 701011-01 OFF-RD MOVING OPERATIONS, 2L, 2W, DAY ONLY
- 701201-02 LANE CLOSURE, 2L, 2W, DAY ONLY, FOR SPEEDS > 45 MPH
- 701301-02 LANE CLOSURE, 2L, 2W, SHORT TERM OPERATIONS
- 701306-01 LANE CLOSURE, 2L, 2W, SLOW MOVING OPERATIONS DAY ONLY, FOR SPEEDS > 45 MPH
- 702001-06 TRAFFIC CONTROL DEVICES
- B.L.R. 21-6 TYPICAL APPLICATION OF TRAFFIC CONTROL DEVICES FOR CONSTRUCTION ON RURAL LOCAL HIGHWAYS
- B.L.R. 22-4 TYPICAL APPLICATION OF TRAFFIC CONTROL DEVICES FOR CONSTRUCTION ON RURAL LOCAL HIGHWAYS (TWO LANE TWO WAY RURAL TRAFFIC ROAD CLOSED TO THRU TRAFFIC)

SUMMARY OF QUANTITIES

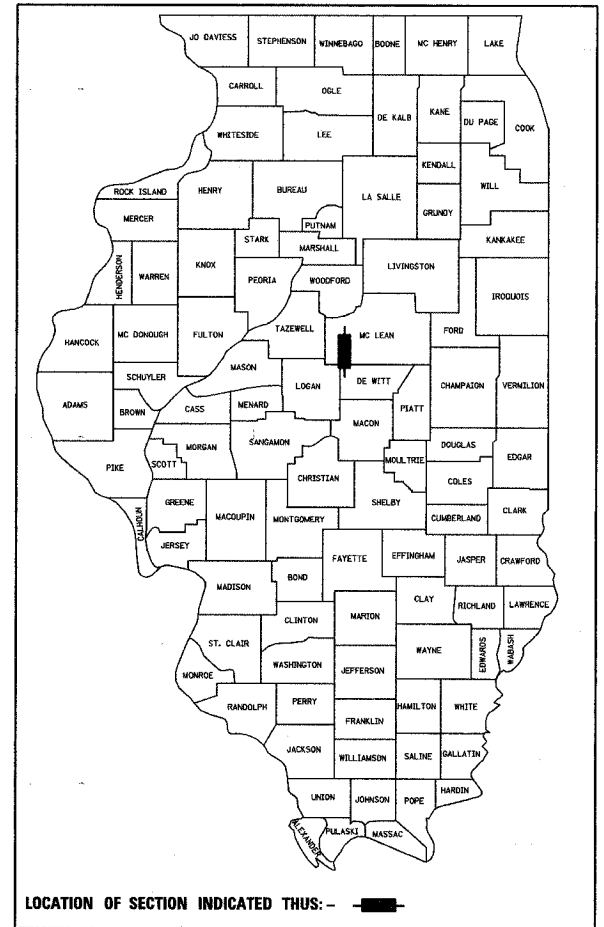
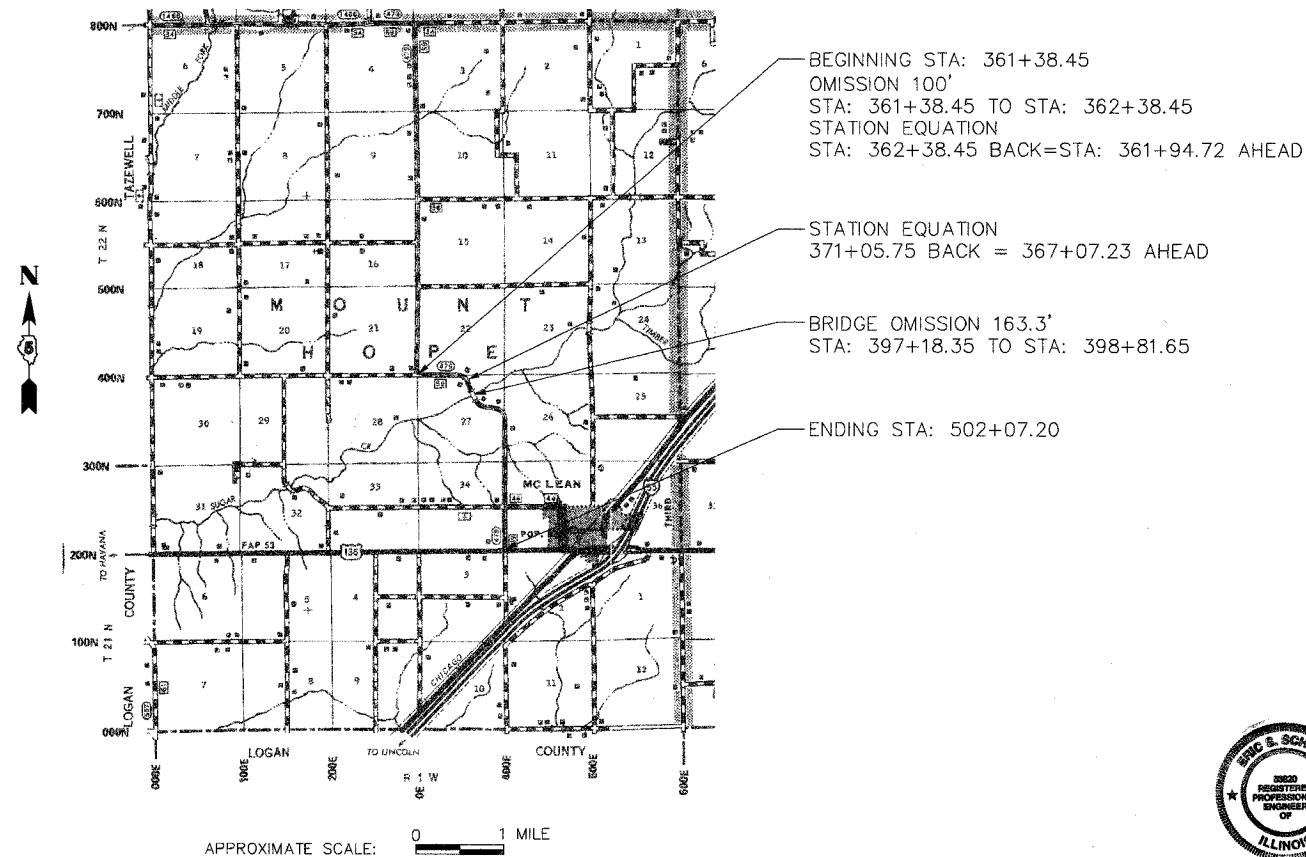
ITEM NUMBER	ITEM	UNIT	CONST. TYPE CODE I-000 QUANTITY
*20200100	EARTH EXCAVATION	CU YD	437
35101800	AGGREGATE BASE COURSE, TYPE B 6"	SQ YD	1,067
*40600100	BITUMINOUS MATERIALS (PRIME COAT)	GALLON	3,600
40600300	AGGREGATE (PRIME COAT)	TON	180
40600980	BITUMINOUS SURFACE REMOVAL-BUTT JOINT	SQ YD	651
40600990	TEMPORARY RAMP	SQ YD	61
*40800010	BITUMINOUS MATERIALS (PRIME COAT)	GALLON	375
*40800040	INCIDENTAL BITUMINOUS SURFACING	TON	325
*44300300	AREA REFLECTIVE CRACK CONTROL TREATMENT, SYSTEM A	SQ YD	34,826
*48101200	AGGREGATE SHOULDERS, TYPE B	TON	2,200
67100100	MOBILIZATION	L SUM	1
Δ78100100	RAISED REFLECTIVE PAVEMENT MARKER	EACH	179
X3550400	BITUMINOUS BASE COURSE SUPERPAVE 7"	SQ YD	1,067
X4066414	BITUMINOUS CONCRETE SURFACE COURSE, SUPERPAVE, MIX "C", N50	TON	2,550
X4066614	BITUMINOUS CONCRETE BINDER COURSE, SUPERPAVE, 1L-19.0, N50	TON	3,950
*X4066765	LEVELING BINDER (MACHINE METHOD), SUPERPAVE N50	TON	1,200

* SEE SPECIAL PROVISIONS
Δ SPECIALTY ITEM

THESE PLANS ARE NOT TO SCALE

J.U.L.I.E.
JOINT UTILITY LOCATION INFORMATION FOR EXCAVATION
1-800-892-0123

CONTRACT NO. 91357



Eric Schmitt
ILLINOIS PROFESSIONAL ENGINEER #55820
EXPIRES 11-30-07

APPROVED	<i>A-11</i>	20 06
	<i>Joseph Schmitt</i>	COUNTY ENGINEER
PASSED	<i>4/25</i>	20 06
	<i>Quill</i>	DISTRICT FIVE ENGINEER OF LOCAL ROADS & STREETS
Releasing For Bid Based on Limited Review	<i>4-25</i>	20 06
	<i>David E. Lawrence</i>	DEPUTY DIRECTOR OF HIGHWAYS, REGION THREE ENGINEER
		STATE OF ILLINOIS DEPARTMENT OF TRANSPORTATION