

STATE OF ILLINOIS  
DEPARTMENT OF TRANSPORTATION

93421

RTE.	SECTION	COUNTY	TOTAL SHEETS	SHEET NO.
CR 603	02-23118-00-BR	ADAMS	13	7
STA. 4+70.00		TO STA. 10+16.18		
FED. ROAD DIST. NO. 6		ILLINOIS	FED. AID PROJECT	

BRIDGE PLANS SHEET 2 OF 8

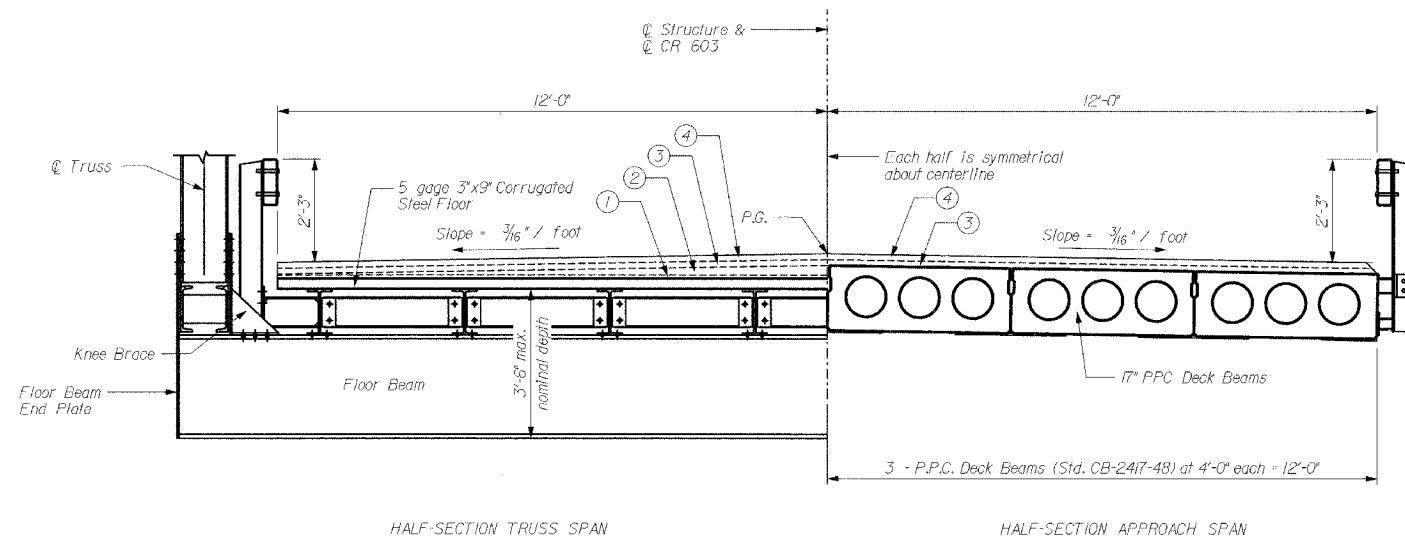
GENERAL NOTES

- SEE SPECIAL PROVISIONS FOR BORING LOGS.
- ALL GROUT ON THIS PROJECT SHALL BE NON-SHRINK.
- CLASS SI CONCRETE SHALL BE USED THROUGHOUT EXCEPT IN THE DECK BEAMS.
- THE CONTRACTOR SHALL DRIVE ONE (1) TEST PILE OF EACH TYPE, AS SPECIFIED, IN A PERMANENT LOCATION AS DIRECTED BY THE ENGINEER BEFORE ORDERING THE REMAINING PILES:  
PIER 1 - (1) HP 12x53  
NORTH ABUT - (1) HP 10x42
- BACKFILL SHALL BE PLACED BEHIND THE ABUTMENT AFTER THE SUPERSTRUCTURE HAS BEEN POURED AND THE FALSEWORK REMOVED. SEE ARTICLE 502.10 OF THE STANDARD SPECIFICATIONS.
- LAYOUT OF SLOPE PROTECTION SYSTEM MAY BE VARIED IN THE FIELD TO SUIT GROUND CONDITIONS AS DIRECTED BY THE ENGINEER.

TOTAL BILL OF MATERIAL

ITEM	UNIT	SUPER	SUB.		TOTAL
			PIERS	ABUTS	
* CHANNEL EXCAVATION	CU.YD.				2480
* RIPRAP, SPECIAL	TON				776
FILTER FABRIC	SQ.YD.				744
* REMOVAL OF EXISTING STRUCTURES	LSUM				1
CONCRETE STRUCTURES	CU.YD.		150.2	21.8	172.0
PRECAST PRESTRESSED CONCRETE DECK BEAMS (17" DEPTH)	SQ.FT.	1440.0			1440.0
REINFORCEMENT BARS, EPOXY COATED	POUND		1680	3280	10960
STEEL RAILING, TYPE S-1	FOOT	120			120
FURNISHING STEEL PILES HPI0x42	FOOT			490	490
FURNISHING STEEL PILES HPI2x53	FOOT		910		910
DRIVING STEEL PILES	FOOT		910	490	1400
TEST PILE STEEL HPI0x42	EACH			1	1
TEST PILE STEEL HPI2x53	EACH		1		1
CONCRETE ENCASUREMENT	CU.YD.		4.8	10.2	15.0
NAME PLATES	EACH				1
WATERPROOFING MEMBRANE SYSTEM	SQ.YD.	160.0			160.0
PORTLAND CEMENT MORTAR FAIRING COURSE	FOOT	300			300
* FURNISHING & ERECTING PREFABRICATED BRIDGE SUPERSTRUCTURE	LSUM		1		1
* BRIDGE JOINT SYSTEM (FIXED).	FOOT		24		24
* BITUMINOUS CONCRETE SURFACE COURSE, SUPERPAVE, MIX "C", N50	TON		103		103
* LEVELING BINDER (MACHINE METHOD), SUPERPAVE N50	TON		90		90
* UNDERWATER STRUCTURE EXCAVATION PROTECTION - LOCATION 1	EACH		1		1
* UNDERWATER STRUCTURE EXCAVATION PROTECTION - LOCATION 2	EACH		1		1

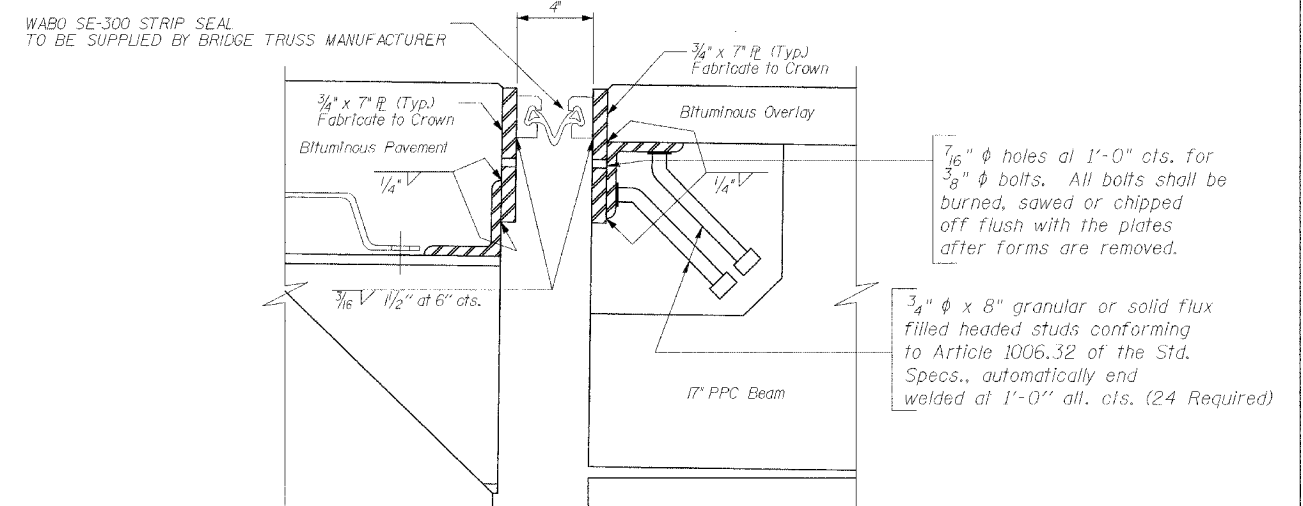
\* SEE SPECIAL PROVISIONS



CROSS SECTION

- LEVELING BINDER (MACHINE METHOD), SUPERPAVE N50
- 3/4" uniform compacted thickness above the corrugated decking (compact well into corrugations, making a good base)
  - 1/4" compacted thickness at edge of deck sloping to 2 1/2" compacted thickness at crown (establishing the crown)
- BITUMINOUS CONCRETE SURFACE COURSE, SUPERPAVE, MIX "C", N50
- 1/2" uniform compacted thickness
  - 1/2" uniform compacted thickness

The asphalt deck quantities for the prefabricated truss span are:  
90 ton Leveling Binder (Machine Method), Superpave N50  
75 ton Bituminous Surface Course, Superpave, Mix "C", N50  
The asphalt deck quantities for the concrete spans are found on Sheet 3 of 8.



EXPANSION JOINT

AT PIER #2  
(Suggested Joint - Final layout to be designed by truss fabricator)

REVISIONS	
NAME	DATE

GENERAL NOTES & MISC. DETAILS

CR 603E OVER  
BEAR CREEK  
SEC 02-23118-00-BR  
ADAMS COUNTY  
STA 6+87.26  
STRUCTURE NUMBER 001-3417  
SCALE: VERT. N/A  
          HORIZ. N/A  
DATE: MAY 2006  
DRAWN BY JLS  
CHECKED BY DSP

PSBA Project No.: R 03-013